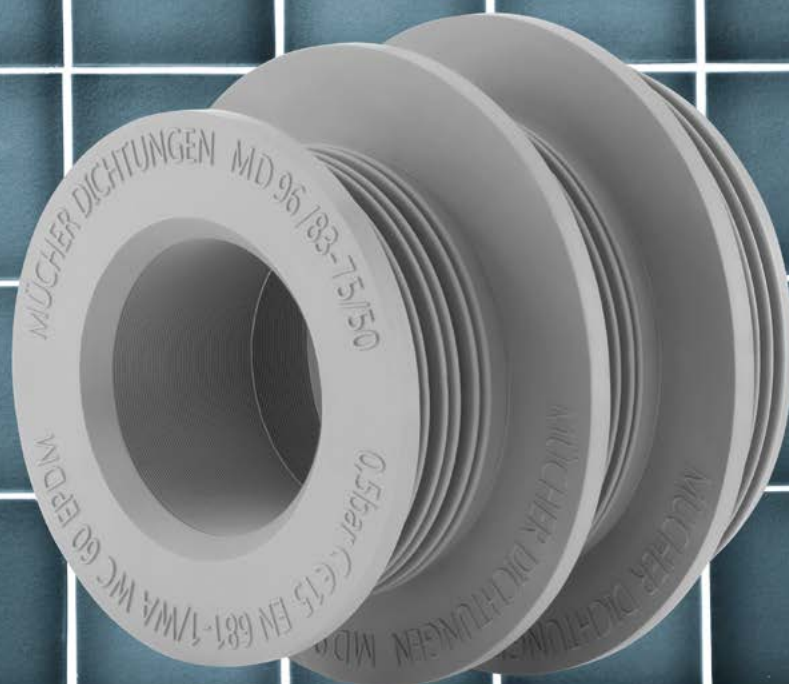




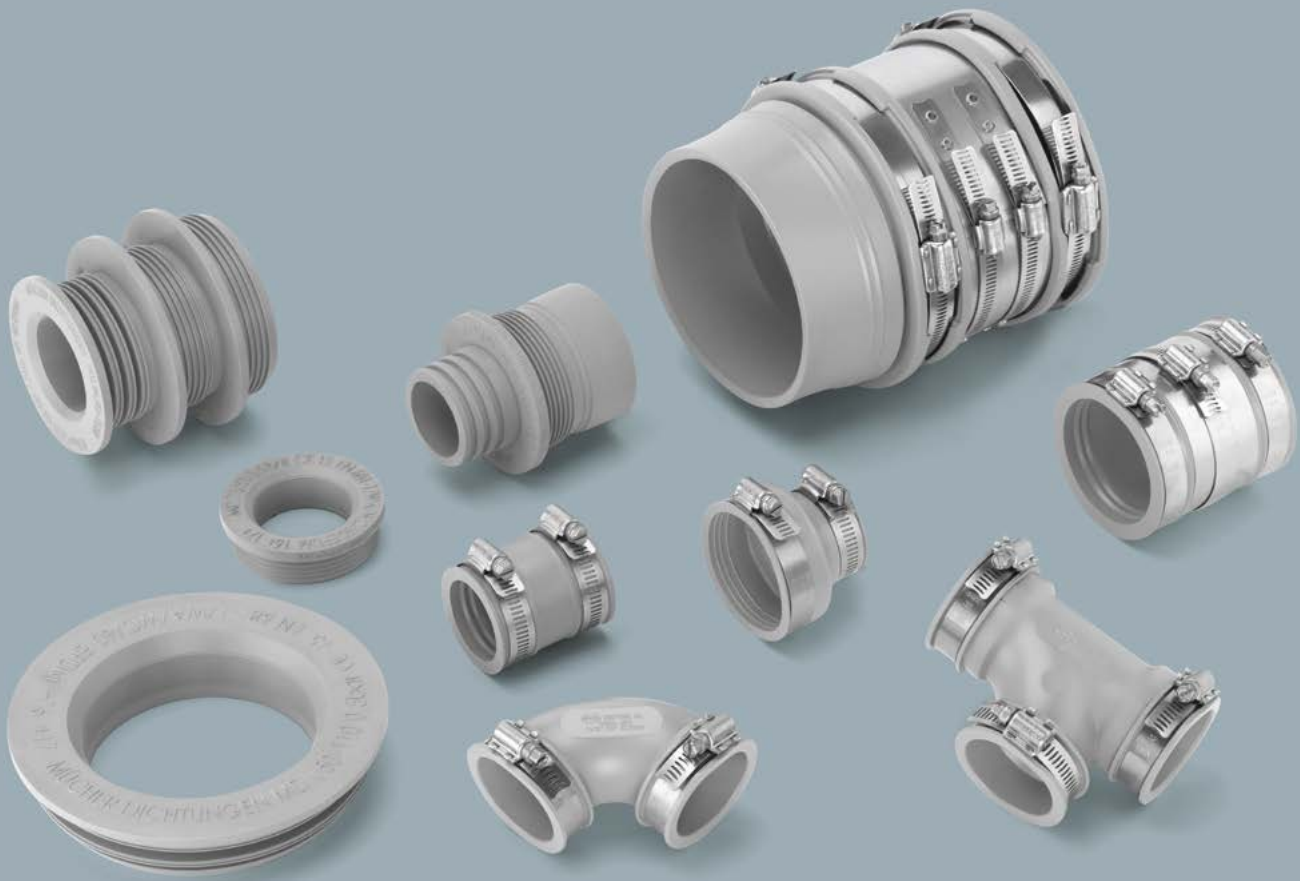
MÜCHER DICHTUNGEN®



TECHNICAL BROCHURE

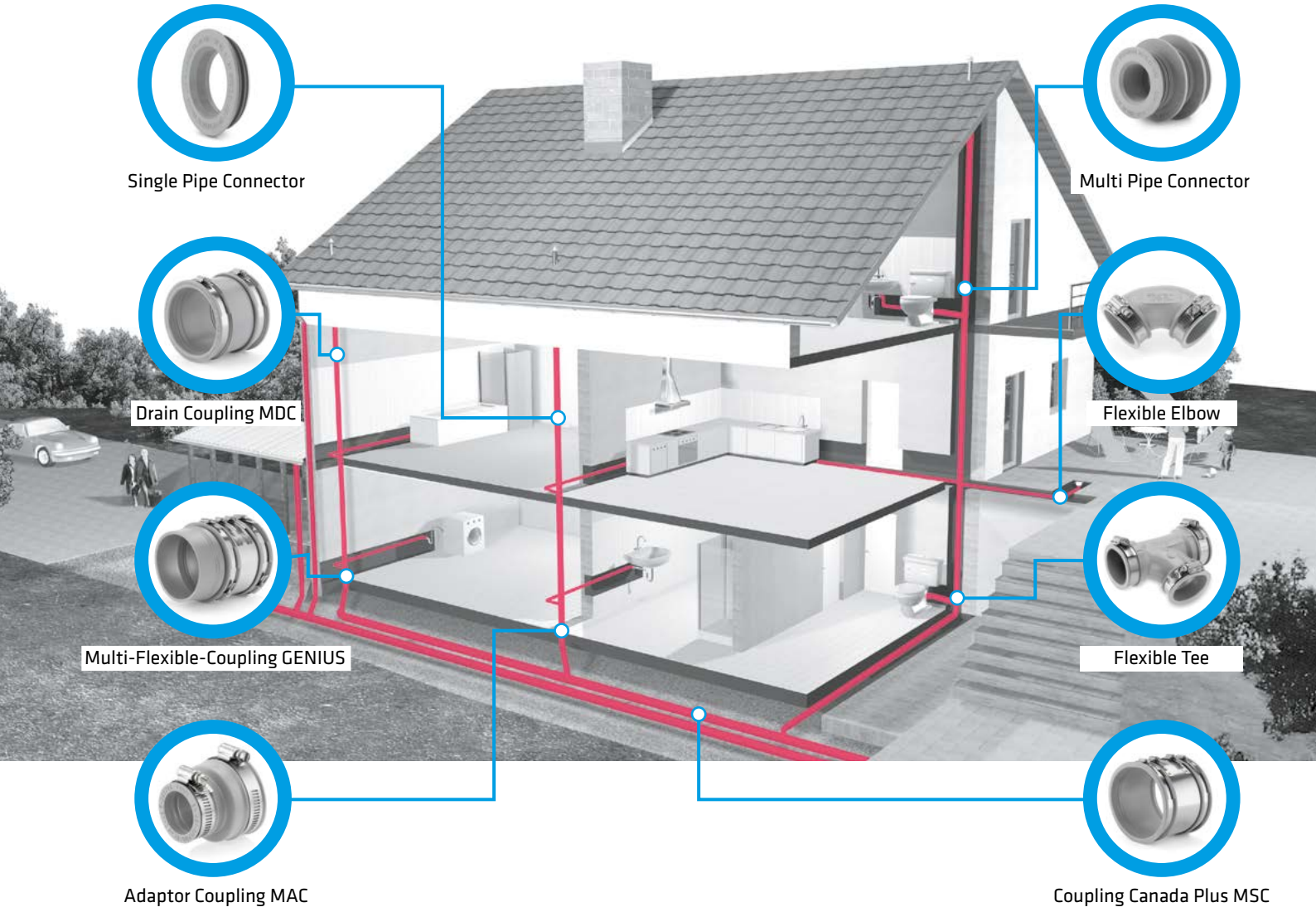
PLUMBING

www.muecher.com 



ABOUT MÜCHER	04
THE MÜCHER-COMMITMENT	05
UNIQUE SELLING POINTS	
TOX-Technology	06
“Lock in Place“ Rubber Profile	07
Certified Safety from the Sealing Specialist	08
MATERIAL SPECIFICATIONS	
Stainless Steels	09
Caoutchouc Elastomers	10
STANDARDS & APPROVALS	
Quality Management System, CE-Marking	12
European Standard DIN EN 16397	12
European Technical Approval	13
Construction Products Regulation	13

INTERNAL CONNECTIONS	
Single Pipe Connector	14
Multi Pipe Connector	18
Multi Pipe Connector Kit	29
EXTERNAL CONNECTIONS	
Adaptor Coupling MAC	30
Drain Coupling MDC	32
Coupling Canada Plus MSC	34
Multi-Flexible-Coupling GENIUS	36
SPECIAL CONNECTIONS	
Flexible Tee	38
Flexible Elbow	40
End Cap	42
Roll-Ring	44
Lubricant	46



Mücher Dichtungen is part of the California based worldwide Mission Rubber group of companies; **the originators of the rubber flexible coupling over 60 years ago.**

Since 1955 Mücher is developing, manufacturing and distributing couplings and seals for all pipe materials used in the low pressure civils and drainage industry. In general Mücher products are used when two pipes with both different diameters and materials need jointing. This requires a custom-made consulting to find a reliable long-term solution.

Whereas Mücher's core business used to be in the civils and drainage industry only, nowadays the business fields have been extended and include both plumbing and industry.

Due to working closely with various pipe manufactures, combined with the long-term presence on the European market place a product range has been formed that offers a reliable and permanent solution for almost any possible application. Especially the sealing technologies for repair solutions require a wide knowledge and expertise for all the different pipe materials and connection systems.

The heart of our manufacturing is the area of customized solutions where Mücher with its 60 year's experience is always identifying the right sealing system, is manufacturing the correct solution and is then supplying to site on time.



The majority of the product range is manufactured at the European headquarters in Frechen, near Cologne. Customized solutions for the UK market are also manufactured at Mücher's Sheffield based daughter company. Mücher and its distributors are present in over 30 different countries.

Together with its customers Mücher is permanently developing new and innovative products for below and above ground applications. Mücher's products are known for their high quality, for being easy to install and for solving problems on site. A good example of a new product development is the Multi-Flexible-Coupling GENIUS.

New product developments are tested in Mücher's own test laboratory against all requirements resulting from the relevant standard. Any new developed seal will run through both material and functional tests. Before any product launch the new developed seal will be tested on live sites to ensure it fulfills all requirements and ease of installation on site. Therefore it is assured that only products that meet the high Mücher quality standard will exit our factory.

Since 1993 Mücher has ran a quality management system and is certified to DIN EN ISO 9001:2008.



THE MÜCHER-COMMITMENT SUMMARIZES THE KEY COMPETENCE OF THE COMPANY.



CONSULTING



DELIVERY



INNOVATION



AVAILABILITY



SECURITY

CONSULTING

You can trust us – we are consulting you the right way! Both commercial and technical consulting have got the highest priority for Mücher. It is our ambition to offer solutions to our customers that are both technically reliable and commercially sustainable. The competence of our Sales & Technical team is outstanding and will continue to develop through training courses and further education.

The guideline to improve our support and consulting further is described in our quality management system according to DIN EN ISO 9001:2008 which was launched over 20 years ago.

DELIVERY

Ordered a.m. – supplied next day! Any a.m. incoming standard sized orders can be supplied next day either for stock or directly to site. Our operational processes from consulting to supplying is completed within a short period of time.

INNOVATION

Our innovations help improving problems on site! It is our companies aim to develop new products and to improve and further develop the existing range of products through rivaling new and innovative technologies. A good example is the initial launch of the TOX-Technology to the sewerage industry. The TOX-Technology eliminates the corrosion of the stainless steel components and increases the life circle.

AVAILABILITY

100% availability creates confidence! Our entire product range is stocked in bulk. This includes both core range items with a high turn around as well as special items with a lower demand. The manufacturing department is the heart of our company. **This is where we manufacture bespoke made large standard couplings and bushes on special customer demands and on time.**

Our 100% availability and delivery capacity allows us to offer a proper solution for almost any problem within the sewerage industry.

SECURITY

On the safe side with Mücher!

All our products comply with and exceed the requirements of the latest DIN and European standards as well as national and international approvals. If it says MÜCHER you can depend on a safe installation process for the installer.

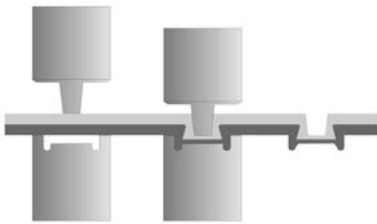
The European Technical Approval ETA-09/0248 assumes **a life circle for Mücher couplings of 50 years, providing proper packaging, stocking and installation.**

INNOVATION

Couplings and other Muecher joints and rings are constantly developed further, both in product design and material. They are characterised by quality, long-life cycle and user friendliness. **Our innovations are in the detail!**

TOX-TECHNOLOGY

Traditional shear band fabrication entails spot welding of clamps to the shear band. Whereas with TOX-TECHNOLOGY heat created during the welding process actually burns the stainless steel. The composition of the stainless steel is attacked and intercrystalline corrosion can result at the welding points.

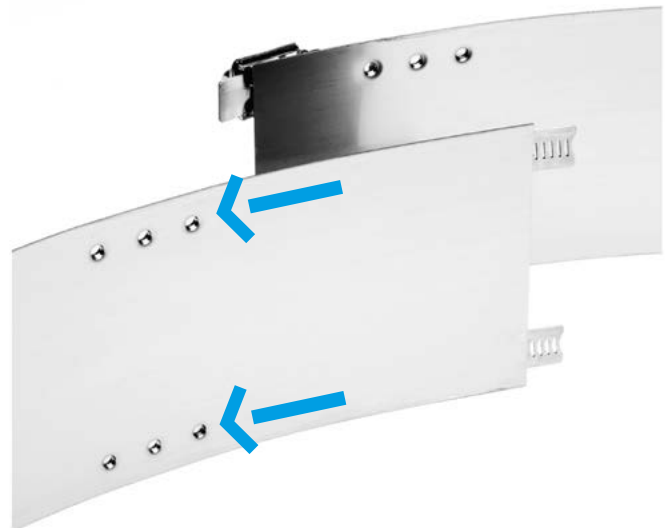
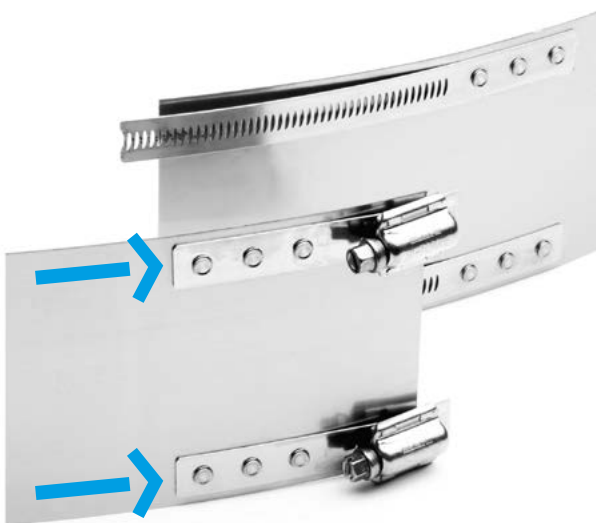


The shear bands on Muecher couplings incorporate the latest in stainless steel fastening techniques:

TOX-TECHNOLOGY (Clinching process, no spot welds)

The negative aspects associated with spot welding are eliminated in this advance process, yet the bond meets or exceeds all relevant tensile strength and shear requirements.

Properties	TOX-Point	Spot Weld
Corrosion	none	yes
Structural Change	none	yes
Dynamic Resilience	excellent	not perfect
Static Resilience	good	excellent
Energy Input	minimal	extremely high
Environment friendly manufacturing	excellent	bad (steams)



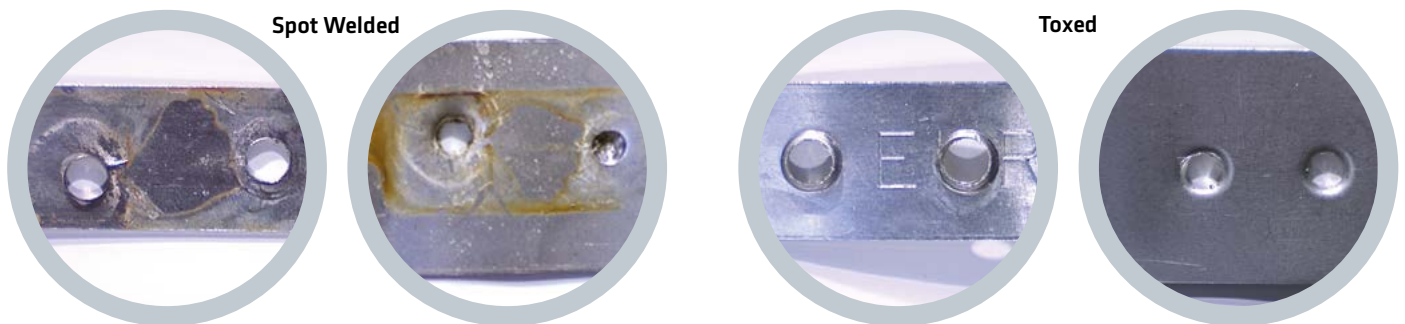


SALT SPRAY TEST SHOWS DIFFERENT CORROSION RESISTANCES

In a salt spray test according to DIN 50 021 SS (neutral) the different corrosion resistances of spot welded and toxed connection were compared.

Test Certificate No. 22000197 MPA NRW

After only a few days a clear corrosion was visible on the spot welded test blocks. The toxed (clinched) stainless steel bands did not show any corrosion after 504 hours (test ended after 3 weeks).



„LOCK IN PLACE“ RUBBER PROFILE

Mücher rubber sleeves are fitted with a unique rubber profile. The “lock in place” profile made from EPDM rubber ensures that the clamps and shear band are properly positioned on the sleeve and remain firmly in place during transit, stocking or installation on site.

The necessary compression of the rubber sleeve can only be guaranteed by a proper positioning of the stainless steel components.

Furthermore to the external based “lock in place” profile, the internal based sealing lines achieve a better sealing effect. Through the stepped sealing lines, additional EPDM sealing material can be compressed. This is of special advantage for sewerage pipes with a rough surface.





CERTIFIED QUALITY FROM THE SEALING SPECIALIST

Vulcanized rubber is the standardized pipe seal in the DIN EN 681-1.

The internal connectors are made from EPDM rubber which shows excellent properties with regards to hot water resistance.

The Muecher Single and Multi Pipe Connectors meet the performance requirements of the following pipe manufacturers, exemplarily shown in the table below:

REQUIREMENTS FOR PIPE AND SEAL								
Manufacturer	Pipe	Standard	Tightness (Water)	Tightness (Gas)	Hot Water Resistance	Noise Protection	Fire Class	Muecher SEAL
Wavin	Wavin AS	DIN EN 1451-1(PP) + DIN EN 681-1 Vulcanized Rubber (EPDM)	0,5 bar	5 mbar	95°C	25 dB(A)	B2 according to DIN 4102	✓
Geberit	Geberit Silent PP	DIN EN 1451-1(PP) + DIN EN 681-1 Vulcanized Rubber (EPDM)	0,5 bar	5 mbar	95°C	20 dB(A)	B2 according to DIN 4102	✓
Ostendorf	Ostendorf - HT	DIN EN 1451-1(PP) + DIN EN 681-1 Vulcanized Rubber (EPDM)	0,5 bar	5 mbar	95°C	26 dB(A)	B1 according to DIN 4102	✓
Ostendorf	Skolan dB	DIN EN 1451-1(PP) + DIN EN 681-1 Vulcanized Rubber (EPDM)	0,5 bar	5 mbar	95°C	20 dB(A)	B2 according to DIN 4102	✓
REHAU	Raupiano Plus	DIN EN 1451-1(PP) + DIN EN 681-1 Vulcanized Rubber (EPDM)	1,0 bar	5 mbar	95°C	24 dB(A)	B2 according to DIN 4102	✓
Dücker	SML	DIN EN 877 Gußeisen (SML) + DIN EN 681-1 Vulcanized Rubber (EPDM)	0,5 bar	10 mbar	93°C	30 dB(A)	B2 according to DIN 4102	✓

The external connectors are standardized in the DIN EN 16397. They are used for the connection and repair of pipe systems below and above ground, as well as inside and outside of buildings.



STAINLESS STEELS

Stainless steel refers to a range of iron based alloys which rely on their chromium content for resistance to corrosion. Research in a number of countries worldwide has shown that in normal soils austenitic stainless steel with a 17% chromium and 9% nickel content gives satisfactory performance, with a design life in excess of 100 years. Whereas in poorly drained gravels, industrial or colliery spoil and in cases where the ground or groundwater contains chlorides (exceeding 1000 ppm) pitting of the steel can occur. In these circumstances the application of a protective wrapping such as “Denso tape” will give adequate protection. Alternatively, in these circumstances an austenitic stainless steel containing molybdenum (minimum 2%) will give better corrosion resistance without the need for additional protection.

Mücher supplies two grades of austenitic stainless steel to suit either normal conditions or conditions when additional corrosion resistance is required.

For use in normal conditions Mücher’s standard products use components manufactured from grade 1.4301 (AISI 304) austenitic stainless steel to DIN EN 10088-2.

For those conditions requiring higher corrosion resistance then components manufactured from grade 1.4401 (AISI 316) austenitic stainless steel to DIN EN 10088-2 is available, too. This grade contains 2% molybdenum and is especially suitable for marine environments.

DIN EN 100 88	Trade Name	International Term	COMPOUNDS-%			
			Carbon (C)	Chromium (Cr)	Nickel (Ni)	Molybdenum (Mo)
1.4301	V2A	BS 304 / AISI 304	≤ 0,07	17,0-19,0	8,5-10,5	-
alternatively						
1.4307	V2A	BS 304 / AISI 304	≤ 0,03	17,5-19,5	8,0-10,0	-
1.4303	V2A	BS 304 / AISI 304	≤ 0,01	17,0-19,0	11,0-13,0	-
1.4567	V2A	BS 304 / AISI 304	≤ 0,04	17,0-19,0	8,5-10,5	-
1.4404	V4A	BS 316 / AISI 316	≤ 0,03	16,5-18,5	10,0-13,0	2,0-2,5
alternatively						
1.4401	V4A	BS 316 / AISI 316	≤ 0,08	16,5-18,5	10,5-13,5	2,0-2,5
1.4571	V4A	BS 316 / AISI 316	≤ 0,08	16,5-18,5	10,5-13,5	2,0-2,5

The welding of stainless steel requires special competence and care as the steel can potentially corrode, resulting in an intercrystalline attack.

Since 2001 Mücher successfully applies the TOX-Technology which makes corrosion almost impossible.

CAOUTCHOUC ELASTOMERS

Rubber is a very flexible and elastic material with a high restoring force. In the technical application this material is officially named elastomer.

The raw materials are natural or synthetic elastomers. A rubber mixture contains different additives. Through addition of heat, rubber becomes vulcanised. This process enables the elasticity of rubber. Deformation within the elastic range can be repeated limitless times without the change of the initial shape. As soon as the deformation forces are released, the elastomer returns back into its initial shape.

Elastomers are resistant against many acids, leaches and aromatic hydrocarbons which appear in the private, public and industrial sewage. For the sealing technology it is important to estimate this resistance, knowing the conditions of the joint such as the concentration of the medium, temperature, pressure as well as the static and dynamic strains.

The ideal elastomer material which is resistant to all gases and fluids does not exist yet. It is necessary to select the material which is the most suitable to meet the requirements demanded.

The most common elastomer types used in the sewage technology are EPDM, SBR, NBR, NR, IIR and IR which all meet the current standards, such as DIN 4060 and DIN EN 681.

RESISTANCE OF ELASTOMERS

The following listed values are for guidance only. The values and characteristics cannot generally be transferred to all operating conditions.

PROPERTIES	EPDM	SBR	NBR	NR	IIR	IR
Ozone Resistance	1	4	4	4	2	4
Oil Resistance	4	5	2	6	6	6
Fuel Resistance	5	6	2	6	6	6
Acid Resistance	1	3	4	3	2	3
Leach Resistance	1	3	4	3	2	3
Gas Permeability	4	4	2	5	1	5
Electric Resistance	2	2	5	1	2	1
Rebound Resilience	3	3	3	2	6	2
Tear Strength	3	2	2	1	2	1
Temperature Resistance	-40° to + 120°C	-40° to + 80°C	-30° to + 100°C	-40° to + 80°C	-30° to + 120°C	-30° to + 120°C
Temporary max. Temperature	+ 160°C	+ 130°C	+ 130°C	+ 130°C	+ 180°C	+ 160°C

1 = excellent 2 = good 3 = satisfactory 4 = sufficient 5 = poor 6 = fail





SHORT DISCRIPTION OF CAOUTCHOUC TYPES

EPDM (Ethylene - Propylene - Diene - Monomer)

Contains extraordinary resistance to oxygen, ozone and further atmospheric influences. UV-light resistant.

SBR (Styrene Butadiene Rubber)

One of the major synthetic rubbers with similar properties as natural rubber (NR). Compared to NR the abrasion resistance of SBR is superior but with an associated deterioration of the elasticity.

NBR (Acrylonitrile Butadiene Rubber)

The basis for NBR is a mixture of acrylonitrile and butadiene. The higher the acryl percentage, the better the resistance against mineral oils and fuels but with an associated deterioration of the elasticity and the cold flexibility.

NR (Natural Rubber)

The raw material is latex milk, extracted from caoutchouc trees. Unlike several synthetic rubbers, NR particularly possesses excellent elastic qualities.

IIR (Butyl Rubber)

Butyl is a mixture of polymer, isobutylene and approximately 3% isoprene. It has excellent aging - and weathering resistances as well as very low gas permeability.

IR (Isoprene Rubber)

Excellent elasticity and good electric resistance. Suits well for cut-offs with other caoutchouc types.



QUALITY MANAGEMENT SYSTEM, CE-MARKING

Since 1993 Mücher's quality management system according to DIN EN ISO 9001:2008 is the guideline for manufacturing, product development, sales and distribution. Developing the quality management system further is one of Mücher's strategic aims.

The compliance of Mücher products with all EU standards and approvals allows Mücher to CE-mark its products. With the CE-marking, Mücher declares that all products meet the requirements of the following standards both for functional and material requirements:



EUROPEAN STANDARD

DIN EN 16397

Since January 2015 flexible couplings have been standardized for the first time ever in the DIN EN 16 397. Until 2014 couplings with and without shear band were only standardized in the DIN EN 295-4 when used with clay pipes.

The scope of application has now sizably extended to the following:

- Couplings can be used for all pipe materials for non-pressure drainage and sewage systems
- For above and below ground applications
- For installation inside and outside of buildings
- For repair purposed and connecting of different pipe systems

The new European Standard for flexible couplings is defined into two parts:

Part 1: **Performance requirements**, DIN EN 16397-1

Part 2: **Characteristics and testing** for metal banded flexible couplings, adaptors and bushes, DIN EN 16397-2

As all relevant pipe standards and technical regulations have been included in the new standard, the scope of testing has considerably increased. Mücher secures its high product quality and the compliance with the standards by external testing at MPA (Materialprüfungsamt) in Dortmund, as well as by internal tests in the Mücher test laboratory. **Therefore Mücher is able to proof test results and compliances although the external quality control is no longer obligatory.**



EUROPEAN TECHNICAL APPROVAL

The European Technical Approval ETA-09/0248 has got the second highest standing after a European harmonized standard.

Canada Plus Type 2B Standard Couplings, Bushes, Adaptor Couplings MAC, as well as Drain Couplings MDC have been approved on a European level for applications below and above ground for both buried and non-buried pipes of all materials.

Centre Scientifique et Technique du Bâtiment
84 avenue Jean Jaurès
Champs sur Marne
F-77447 Marne-la-Vallée Cedex 2
Tel : (33) 01 64 68 52 52
Fax : (33) 01 60 05 70 37

Autorisé et validé conformément à l'article 10 de la directive 89/105/EEC du Conseil, du 21 décembre 1988, relative au rapprochement des dispositions législatives, réglementaires et administratives des États membres concernant les produits de construction.

CSTB
le futur en construction
MEMBRE DE L'EOTA

Agrément Technique Européen ETA-09/0248
(English language translation, the original version is in french language)

Trade names:
Noms commerciaux :
- FLEX-SEAL Plus (NORHAM Company)
- CANADA Plus (MÜCHER DICHTUNGEN GMBH & CO KG)

Holder of approval:
Titulaire :
Société NORHAM
ZA Les Druisieux
F-26260 Saint-Donat-sur-l'Herbasse

Generic type and use of construction product:
Type générique et utilisation prévue du produit de construction :
Elastomeric flexible couplings, with an eventually stainless steel shear band used to assembly sewer or drainage pipe.
Raccords flexibles en élastomère, éventuellement pourvus d'une bande de renfort en acier inoxydable, destinés à assembler différents types de canalisations d'assainissement.

Validity from / to:
Validité du :
au :
15 January 2013
15 January 2018

Manufacturing plant:
Usines de fabrication :
- Société NORHAM
ZA Les Druisieux
F-26260 Saint-Donat-sur-l'Herbasse
- MÜCHER DICHTUNGEN GMBH & CO KG
Saalestrasse
D-58256 Ennepetal

Le présent Agrément technique européen contient :
This European Technical Approval contains:
14 pages including 4 annexes which form an integral part of the document.
14 pages incluant 4 annexes faisant partie intégrante du document.

EOTA Organisation pour l'Agrément Technique Européen
European Organisation for Technical Approvals



The EOTA (European organization for technical approvals) is based in Brussels and has developed this approval in partnership with the French CSTB (Centre Scientifique et Technique du Bâtiment).

27 European testing boards accepted and validated the European Technical Approval ETA-09/0248 for their domestic markets.

All testing boards mentioned below are members of the EOTA.

EOTA MEMBERS		EOTA MEMBERS	
	Austria : ÖSTERREICHISCHES INSTITUT FÜR BAUTECHNIK (OIB)		ETA-Latvia Building Department of the Ministry of Economics
	Belgium UNION BELGE POUR L'AGREMENT TECHNIQUE DANS LA CONSTRUCTION (UBAtc) asbl - BELGISCHE UNIE VOOR DE TECHNISCHE GOEDKEURING IN DE BOUW (BUigb) vzw		Statybos Produkcijos Serifikavimo Centras (SPSC) SE Certification Centre of Building Products
	Cyprus CENTRAL LABORATORY - PUBLIC WORKS DEPARTMENT		LABORATOIRE DES PONTS ET CHAUSSEES
	Czech Republic Technicky a zkušební ústav stavební Praha, s.p. (TZUS) Technical and Test Institute for Construction		STICHTING BOUWKWALITEIT (SBK)
	Denmark ETA-DANMARK A/S		SINTEF Building and Infrastructure (SINTEF)
	Estonia Tallinna Tehnikajükkool Tallinn University of Technology (TUT)		Instytut Techniki Budowlanej (ITB)
	Finland VTT Expert Services Oy		LABORATORIO NACIONAL DE ENGENHARIA CIVIL (LNEC)
	France CENTRE SCIENTIFIQUE ET TECHNIQUE DU BATIMENT (CSTB)		Technický a Skúšobný Ústav Stavebný (TSUS) Building Testing & Research Institute
	Germany DEUTSCHES INSTITUT FÜR BAUTECHNIK (DIBt)		ZAVOD ZA GRABENŠTVO SLOVENIJE (ZAG)
	Greece HELLENIC ORGANIZATION FOR STANDARDISATION (ELOT)		INSTITUTO DE CIENCIAS DE LA CONSTRUCCION EDUARDO TORROJA (IETcc)
	Hungary ÉPÍTÉSÜGYI MINOSEGELLENORZO INNOVÁCIÓS KHT (EMI Kht) Non-profit Company for Quality Control and Innovation in Building		SWEDISH INSTITUTE FOR TECHNICAL APPROVAL IN CONSTRUCTION (SITAC)
	Iceland INNOVATION CENTRE ICELAND (NMI)		SWISS FEDERAL LABORATORIES FOR MATERIALS TESTING AND RESEARCH (EMPA)
	Ireland IRISH AGREEMENT BOARD (IAB) NATIONAL STANDARDS AUTHORITY OF IRELAND		BRITISH BOARD OF AGREEMENT (BBA)
	Italy ISTITUTO PER LE TECNOLOGIE DELLA COSTRUZIONE (ITC)		

CONSTRUCTION PRODUCTS REGULATION

The European construction products regulation is in place since 01.07.2013.

As a manufacturer of building and construction products, Mücher Dichtungen® declares the conformity of all products according to the European standards and approvals in its declaration of performance.



SINGLE PIPE CONNECTOR

- + For different dimensions and materials
- + Internal seal
- + For horizontal and vertical installations
- + Resistant to 0.5 bar

Single Pipe Connector – for the internal connection of pipe systems with different dimensions and materials

The Single Pipe Connector joints pipe systems with different dimensions and materials and can be used for flush-mounting and non-buried pipe connections.

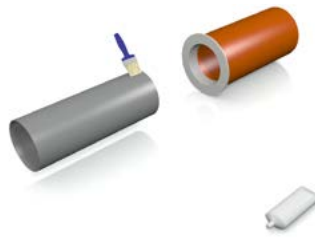
The Single Pipe Connector is made from a durable EPDM rubber and has a noise reducing impact on downpipes.



INSTALLATION



Position pipe ends.

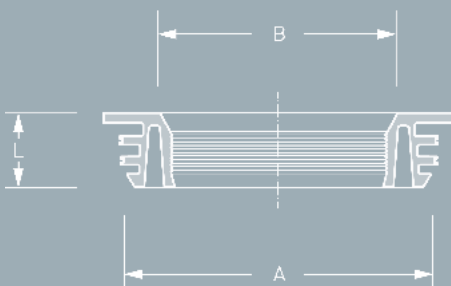


Insert Single Pipe Connector into larger pipe. Apply lubricant to plain ended pipe.



Insert smaller pipe into Single Pipe Connector.

DESCRIPTION



TECHNICAL SPECIFICATION

Single Pipe Connector for the internal connection of pipe systems with different dimensions and materials.

Pipe 1 DN/Material _____
 Outside Ø (mm) _____
 Pipe 2 DN/Material _____
 Internal Ø (mm) _____

Article Number _____
 Qty Price/Unit Total

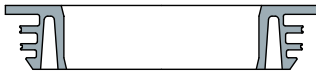
Manufacturer: MÜCHER DICHTUNGEN®, D-50226 Frechen, T +49 2234 928 03-0, F-55
 Pressure Tightness: 0.5 bar water / -0.3 bar vacuum
 Sealing Material: EPDM rubber according to DIN EN 681-1
 Temperature Resistance: -40°C to +120°C, temporary max. temperature +160°C
 Standard/Approval: DIN EN 681-1, CE16



PRODUCT RANGE

SINGLE PIPE CONNECTOR						
Article Number	Reference	A Size Range (mm)	B Size Range (mm)	L Length (mm)	resistant to (bar)	Weight (kg)
500000	Single Pipe Connector 73 50	73	50	23	0,5	0,10
500001	Single Pipe Connector 150 110	150	110	36	0,5	0,20

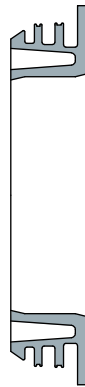
Application schedules of the Single Pipe Connectors can be found on pages 16 - 17.



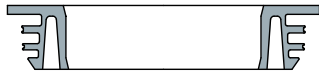
SINGLE PIPE CONNECTOR 73 | 50

Article-No. 500000

Spigot/Socket	Pipe	DN
Spigot	Loro X	70
Spigot	Geberit Silent PP	70
Spigot	Eternit Fibre Cement	70
Spigot	Cast Iron SML	70
Spigot	HT	70
Spigot	Raupiano Plus	70
Spigot/Socket	Cast Iron GA	70



Pipe	DN
Geberit PE	50
Geberit Silent PP	50
HT	50
Raupiano Plus	50
Zinc Downpipe	50



SINGLE PIPE CONNECTOR 150 | 110

Article-No. 500001

Spigot/Socket	Pipe	DN
Spigot	Geberit PE	150
Spigot	Geberit Silent PP	150
Spigot	Skolan dB	150
Spigot	HT	150
Spigot	Raupiano Plus	150
Spigot/Socket	Zinc Downpipe	150
Spigot	Eternit Fibre Cement	150
Spigot	Gusseisenrohr GA	150
Socket	Gusseisenrohr GA	125
Spigot	Cast Iron SML	150
Spigot	Gusseisenrohr GGG	150



Pipe	DN
Geberit Silent db20	100
Skolan dB	100
Geberit PE	100
Geberit Silent PP	100
HT	100
Raupiano Plus	100
Cast Iron SML	100



MULTI PIPE CONNECTOR

- + For different dimensions and materials
- + Internal seal
- + For horizontal and vertical installations
- + Resistant to 0.5 bar

Multi Pipe Connector - for the internal connection of pipe systems with different dimensions and materials

The Multi Pipe Connector joints pipe systems with different dimensions and materials and can be used for flush-mounting and non-buried pipe connections. Multi Pipe Connectors can be combined with other Multi Pipe Connectors.

The Multi Pipe Connector is made from a durable EPDM rubber and has a noise reducing impact on downpipes.



INSTALLATION



Position pipe ends and cut off Multi Pipe Connector depending on the application.

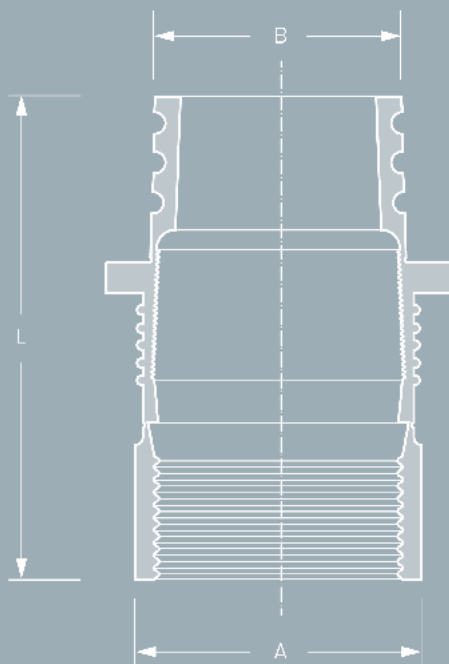


Fold in Multi Pipe Connector depending on the application.



Insert Multi Pipe Connector into larger pipe, apply lubricant to plain ended pipe and insert smaller pipe.

DESCRIPTION



TECHNICAL SPECIFICATION

Multi Pipe Connector for the internal connection of pipe systems with different dimensions and materials.

Pipe 1 DN/Material _____
 Outside Ø (mm) _____
 Pipe 2 DN/Material _____
 Internal Ø (mm) _____

Article Number _____
 Qty Price/Unit Total

Manufacturer: MÜCHER DICHTUNGEN®, D-50226 Frechen, T +49 2234 928 03-0, F-55
 Pressure Tightness: 0.5 bar water / -0.3 bar vacuum
 Sealing Material: EPDM rubber according to DIN EN 681-1
 Temperature Resistance: -40 °C to +120 °C, temporary max. temperature +160 °C
 Standard/Approval: DIN EN 681-1, CE16

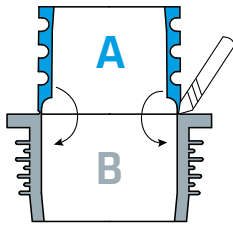
**PRODUCT RANGE** 

MULTI PIPE CONNECTOR						
Article Number	Reference	A Size Range (mm)	B Size Range (mm)	L Length (mm)	resistant to (bar)	Weight (kg)
500002	Multi Pipe Connector 50 40/32	50	40/32	64	0,5	0,10
500003	Multi Pipe Connector 64/58 50/40	64/58	50/40	96	0,5	0,10
500004	Multi Pipe Connector 75/70 50/40	75/70	50/40	98	0,5	0,10
500005	Multi Pipe Connector 96/83 75/50	96/83	75/50	100	0,5	0,20
500006	Multi Pipe Connector 100/105 90/75	100-105	90/75	70	0,5	0,20
500007	Multi Pipe Connector 130/123 110/75	130-123	110/75	69	0,5	0,30
500008	Multi Pipe Connector 150 125/110	150	125/110	120	0,5	0,40

Multi Pipe Connectors are very flexible and can be combined and installed in various combinations.

Depending on the application parts of the Multi Pipe Connectors are folded in, removed or pushed inside each other.

Pages 20 – 28 show the application schedules of the Multi Pipe Connectors and in which combinations they can be installed for various different inside and outside pipe diameters.



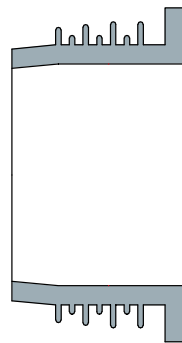
MULTI PIPE CONNECTOR

50 | 40/32

Article-No. 500002

COMBINATIONS

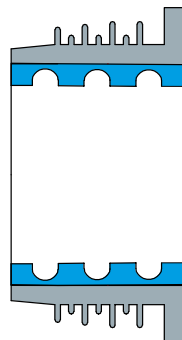
Spigot/Socket	Pipe	DN
Spigot	Geberit Silent db20	56
Socket	HT	50
Spigot	Loro X	50
Socket	Raupiano Plus	50
Spigot	Geberit PE	50
Socket	Geberit Silent PP	50
Socket	Skolan dB	50
Spigot	Eternit Fibre Cement	50
Spigot/Socket	Zinc Downpipe	50
Spigot	Cast Iron SML	50



B

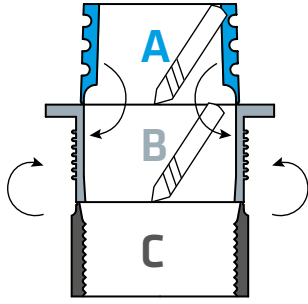
Pipe	DN
Geberit PE	40
Geberit Silent PP	40
HT	40
Raupiano Plus	40

Spigot/Socket	Pipe	DN
Spigot	Geberit Silent db20	56
Socket	HT	50
Spigot	Loro X	50
Socket	Raupiano Plus	50
Spigot	Geberit PE	50
Socket	Geberit Silent PP	50
Socket	Skolan dB	50
Spigot	Eternit Fibre Cement	50
Spigot/Socket	Zinc Downpipe	50
Spigot	Cast Iron SML	50



**A
+
B**

Pipe	DN
Geberit PE	32
Geberit Silent PP	32
HT	32
Loro X	32



MULTI PIPE CONNECTOR 64/58 | 50/40

Article-No. 500003

COMBINATIONS

Spigot/Socket	Pipe	DN
Socket	Geberit Silent db20	56
Socket	Skolan dB	50
Spigot	Old Plastic Pipe (DDR)	63
Spigot	Zinc Downpipe	60



B

Pipe	DN
Geberit PE	50
Geberit Silent PP	50
HT	50
Raupiano Plus	50
Zinc Downpipe	50

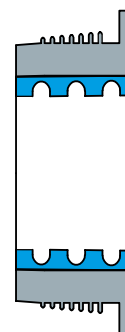
Spigot/Socket	Pipe	DN
Socket	Old Plastic Pipe (DDR)	63



B
+
C

Pipe	DN
Geberit PE	50
Geberit Silent PP	50
HT	50
Raupiano Plus	50
Zinc Downpipe	50

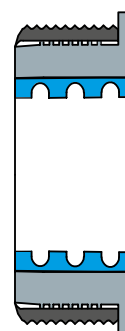
Spigot/Socket	Pipe	DN
Socket	Geberit Silent db20	56
Socket	Skolan dB	50
Spigot	Old Plastic Pipe (DDR)	63
Spigot	Zinc Downpipe	60



A
+
B

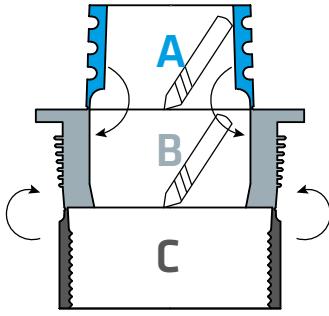
Pipe	DN
Geberit PE	40
Geberit Silent PP	40
HT	40
Raupiano Plus	40

Spigot/Socket	Pipe	DN
Socket	Old Plastic Pipe (DDR)	63



A
+
B
+
C

Pipe	DN
Geberit PE	40
Geberit Silent PP	40
HT	40
Raupiano Plus	40

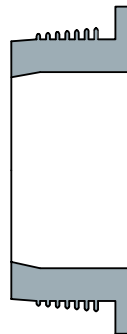


MULTI PIPE CONNECTOR 75/70 | 50/40

Article-No. 500004

COMBINATIONS

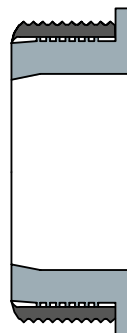
Spigot/Socket	Pipe	DN
Spigot	Geberit Silent db20	70
Spigot	Geberit PE	70
Spigot	Skolan dB	70
Spigot	Geberit Silent PP	70
Spigot	HT	70
Spigot	Raupiano Plus	70
Spigot	Cast Iron SML	70
Spigot	Eternit Fibre Cement	70
Spigot	Loro X	70



B

Pipe	DN
Geberit PE	50
Geberit Silent PP	50
HT	50
Raupiano Plus	50
Zinc Downpipe	50

Spigot/Socket	Pipe	DN
Socket	HT	70
Socket	Raupiano Plus	70
Socket	Geberit Silent PP	70
Spigot/Socket	Zinc Downpipe	76
Spigot	Cast Iron SML	80
Socket	Loro X	70
Socket	Eternit Fibre Cement	50



**B
+
C**

Pipe	DN
Geberit PE	50
Geberit Silent PP	50
HT	50
Raupiano Plus	50
Zinc Downpipe	50



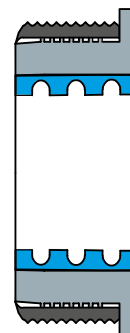
Spigot/Socket	Pipe	DN
Spigot	Geberit Silent db20	70
Spigot	Geberit PE	70
Spigot	Skolan dB	70
Spigot	Geberit Silent PP	70
Spigot	HT	70
Spigot	Raupiano Plus	70
Spigot	Cast Iron SML	70
Spigot	Eternit Fibre Cement	70
Spigot	Loro X	70



A
+
B

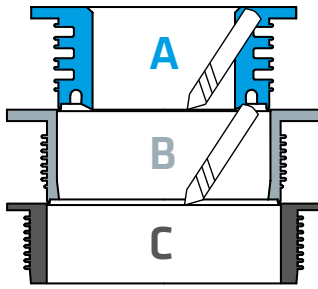
Pipe	DN
Geberit PE	40
Geberit Silent PP	40
HT	40
Raupiano Plus	40

Spigot/Socket	Pipe	DN
Socket	HT	70
Socket	Raupiano Plus	70
Socket	Geberit Silent PP	70
Spigot/Socket	Zinc Downpipe	76
Spigot	Cast Iron SML	80
Socket	Loro X	70
Socket	Eternit Fibre Cement	50



A
+
B
+
C

Pipe	DN
Geberit PE	40
Geberit Silent PP	40
HT	40
Raupiano Plus	40

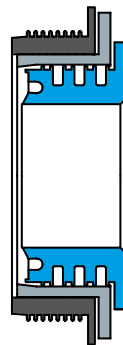


MULTI PIPE CONNECTOR 96/83 | 75/50

Article-No. 500005

COMBINATIONS

Spigot/Socket	Pipe	DN
Spigot	Loro X	100
Spigot	Geberit Silent db20	100
Spigot	Cast Iron GGG	100
Spigot/Socket	Zinc Downpipe	100
Spigot	Old Plastic Pipe (DDR)	100
Spigot	Skolan dB	100
Spigot	Eternit Fibre Cement	100
Socket	Eternit Fibre Cement	70



A
+
B
+
C

Pipe	DN
Geberit PE	50
Geberit Silent PP	50
HT	50
Raupiano Plus	50
Zinc Downpipe	50

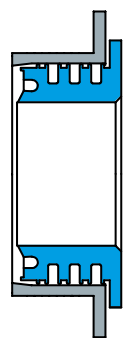
Spigot/Socket	Pipe	DN
Spigot	Loro X	100
Spigot	Geberit Silent db20	100
Spigot	Cast Iron GGG	100
Spigot/Socket	Zinc Downpipe	100
Spigot	Old Plastic Pipe (DDR)	100
Spigot	Skolan dB	100
Spigot	Eternit Fibre Cement	100
Socket	Eternit Fibre Cement	70



B
+
C

Pipe	DN
Geberit Silent db20	70
Geberit PE	70
Geberit Silent PP	70
HT	70
Raupiano Plus	70
Zinc Downpipe	76

Spigot/Socket	Pipe	DN
Spigot	Geberit PE	90
Spigot	Geberit Silent PP	90
Spigot	Old Plastic Pipe (DDR)	90
Spigot	HT	90
Spigot	Raupiano Plus	90
Spigot	Loro X	90

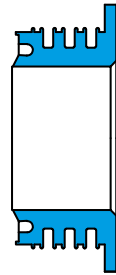


A
+
B

Pipe	DN
Geberit PE	50
Geberit Silent PP	50
HT	50
Raupiano Plus	50
Zinc Downpipe	50



Spigot/Socket	Pipe	DN
Socket	HT	70
Socket	Raupiano Plus	70
Socket	Geberit Silent PP	70
Spigot/Socket	Zinc Downpipe	76
Spigot	Cast Iron SML	80
Socket	Loro X	70
Socket	Eternit Fibre Cement	50



A

Pipe	DN
Geberit PE	50
Geberit Silent PP	50
HT	50
Raupiano Plus	50
Zinc Downpipe	50

Spigot/Socket	Pipe	DN
Spigot	Geberit PE	90
Spigot	Geberit Silent PP	90
Spigot	Old Plastic Pipe (DDR)	90
Spigot	HT	90
Spigot	Raupiano Plus	90
Spigot	Loro X	90



B

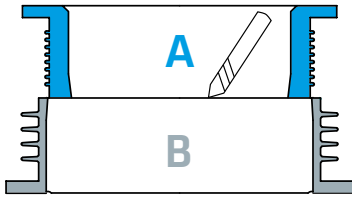
Pipe	DN
Geberit Silent db20	70
Geberit PE	70
Geberit Silent PP	70
HT	70
Raupiano Plus	70
Zinc Downpipe	76

Spigot/Socket	Pipe	DN
Spigot	Loro X	100
Spigot	Geberit Silent db20	100
Spigot	Cast Iron GGG	100
Spigot/Socket	Zinc Downpipe	100
Spigot	Old Plastic Pipe (DDR)	100
Spigot	Skolan dB	100
Spigot	Eternit Fibre Cement	100
Socket	Eternit Fibre Cement	70



C

Pipe	DN
Cast Iron SML	80



MULTI PIPE CONNECTOR 100/105 | 90/75

Article-No. 500006

COMBINATIONS

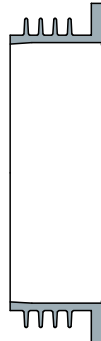
Spigot/Socket	Pipe	DN
Spigot	Geberit PE	100
Spigot	Geberit Silent PP	100
Spigot	Cast Iron SML	100
Spigot	Cast Iron GA	100
Spigot	HT	100
Spigot	Raupiano Plus	100



A
+
B

Pipe	DN
Geberit Silent db20	70
Geberit PE	70
Geberit Silent PP	70
HT	70
Raupiano Plus	70
Zinc Downpipe	76

Spigot/Socket	Pipe	DN
Spigot	Geberit PE	100
Spigot	Geberit Silent PP	100
Spigot	Cast Iron SML	100
Spigot	Cast Iron GA	100
Spigot	HT	100
Spigot	Raupiano Plus	100



B

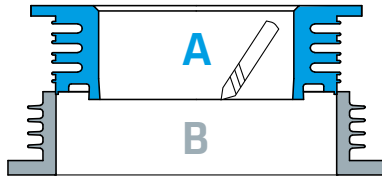
Pipe	DN
Geberit Silent db20	90
Geberit PE	90
Geberit Silent PP	90
HT	90
Raupiano Plus	90

Spigot/Socket	Pipe	DN
Spigot	Cast Iron GGG	80
Socket	HT	90
Socket	Geberit Silent PP	90
Socket	Skolan db	90



A

Pipe	DN
Geberit Silent db20	70
Geberit PE	70
Geberit Silent PP	70
HT	70
Raupiano Plus	70
Zinc Downpipe	76



MULTI PIPE CONNECTOR 130/123 | 110/75

Article-No. 500007

COMBINATIONS

Spigot/Socket	Pipe	DN
Spigot	Geberit Silent db20	125
Socket	Cast Iron GA	100
Spigot	Skolan dB	125
Socket	HT	125
Socket	Raupiano Plus	125
Socket	Geberit Silent PP	125
Spigot	Eternit Fibre Cement	125
Spigot	Cast Iron GGG	125
Spigot	Cast Iron SML	125
Spigot	Loro X	125
Spigot	Cast Iron GA	125



A
+
B

Pipe	DN
Geberit Silent db20	70
Geberit PE	70
Geberit Silent PP	70
HT	70
Raupiano Plus	70
Zinc Downpipe	76

Spigot/Socket	Pipe	DN
Socket	HT	100
Socket	Raupiano Plus	100
Socket	Geberit Silent PP	100
Socket	Skolan dB	100
Spigot	Stainless Steel Europipe	100



A

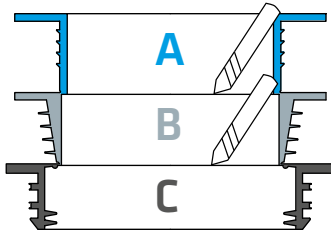
Pipe	DN
Geberit Silent db20	70
Geberit PE	70
Geberit Silent PP	70
HT	70
Raupiano Plus	70
Zinc Downpipe	76

Spigot/Socket	Pipe	DN
Spigot	Geberit Silent db20	125
Socket	Cast Iron GA	100
Spigot	Skolan dB	125
Socket	HT	125
Socket	Raupiano Plus	125
Socket	Geberit Silent PP	125
Spigot	Eternit Fibre Cement	125
Spigot	Cast Iron GGG	125
Spigot	Cast Iron SML	125
Spigot	Loro X	125
Spigot	Cast Iron GA	125



B

Pipe	DN
Geberit Silent db20	100
Skolan dB	100
Geberit PE	100
Geberit Silent PP	100
HT	100
Raupiano Plus	100
Cast Iron SML	100

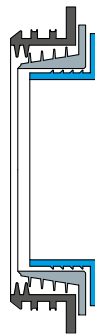


MULTI PIPE CONNECTOR 150 | 125/110

Article-No. 500008

COMBINATIONS

Spigot/Socket	Pipe	DN
Spigot	Geberit PE	150
Spigot	Geberit Silent PP	150
Spigot	Skolan dB	150
Spigot	HT	150
Spigot	Raupiano Plus	150
Spigot/Socket	Zinc Downpipe	150
Spigot	Eternit Fibre Cement	150
Spigot	Cast Iron GA	150
Socket	Cast Iron GA	125
Spigot	Cast Iron SML	150
Spigot	Cast Iron GGG	150



A
+
B
+
C

Pipe	DN
Geberit Silent db20	100
Skolan dB	100
Geberit PE	100
Geberit Silent PP	100
HT	100
Raupiano Plus	100
Cast Iron SML	100

Spigot/Socket	Pipe	DN
Spigot	Geberit PE	150
Spigot	Geberit Silent PP	150
Spigot	Skolan dB	150
Spigot	HT	150
Spigot	Raupiano Plus	150
Spigot/Socket	Zinc Downpipe	150
Spigot	Eternit Fibre Cement	150
Spigot	Cast Iron GA	150
Socket	Cast Iron GA	125
Spigot	Cast Iron SML	150
Spigot	Cast Iron GGG	150



C

Pipe	DN
Geberit Silent db20	125
Skolan dB	125
Geberit PE	125
Geberit Silent PP	125
HT	125
Raupiano Plus	125
Cast Iron SML	125

Spigot/Socket	Pipe	DN
Socket	Skolan dB	125



A
+
B

Pipe	DN
Geberit Silent db20	100
Skolan dB	100
Geberit PE	100
Geberit Silent PP	100
HT	100
Raupiano Plus	100
Cast Iron SML	100



The right solution always to hand!

MULTI PIPE CONNECTOR KIT

Article-No. 500113

The Multi Pipe Connector Kit consists of 6 Multi Pipe Connectors which offer solutions when connecting pipe systems within 32 - 130 mm diameter.

The Multi Pipe Connector Kit is the ideal basic equipment for every workshop van. The right solution always to hand! The connection can be made immediately and the site work can continue without delay.



KIT RANGE

The Multi Pipe Connector Kit consists of the following 6 Multi Pipe Connectors:



50 | 40/32

Article-No. 500002



64/58 | 50/40

Article-No. 500003



75/70 | 50/40

Article-No. 500004



100/105 | 90/75

Article-No. 500006



130/123 | 110/75

Article-No. 500007



90/83 | 75/50

Article-No. 500005



Adaptor Coupling

MAC

- + Adaptor for different outside diameters
- + For above and below ground
- + External compression seal
- + Resistant to 0.6 bar

Adaptor Coupling MAC - for the external connection of all pipe systems with different outside diameters

The Adaptor Coupling MAC connects all plain ended pipes with different outside diameters and materials.

The Adaptor Coupling MAC can be used for applications above and below ground as well as inside and outside of buildings.

When changing nominal diameters, the flow direction needs consideration.



INSTALLATION

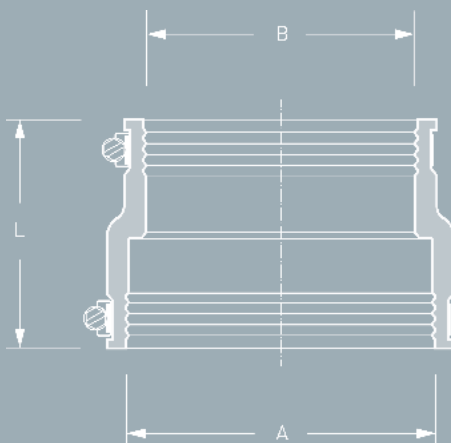


Position plain ended pipes.

Slide adaptor coupling over one plain end.

Push other plain ended pipe into adaptor coupling and tighten clamps.

DESCRIPTION



TECHNICAL SPECIFICATION

Adaptor Coupling MAC for the external connection of all plain ended pipe systems with different outside diameters for applications above and below ground as well as inside and outside of buildings.

Pipe 1 DN/Material _____
 Pipe 2 DN/Material _____

Article Number _____
 ___ Qty ___ Price/Unit ___ Total

Manufacturer: MÜCHER DICHTUNGEN®, D-50226 Frechen, T +49 2234 928 03-0, F-55
 Pressure Tightness: 0.6 bar water / -0.3 bar vacuum
 Jetting Resistance: 120 bar
 Sealing Material: EPDM rubber with lock in place profile according to DIN EN 681-1
 Stainless Steel: AISI 304/1.4301, alternatively AISI 316/1.4404 according to DIN EN 10088-2

Temperature Resistance: -40°C to +120°C, temporary max. temperature +160°C
 Standard/Approval: DIN EN 16397-2, European Technical Approval ETA-09/0248, CE16



PRODUCT RANGE

ADAPTOR COUPLING MAC							
Article Number	Reference	A Size Range (mm)	B Size Range (mm)	L Length (mm)	resistant to (bar)	Nm	Weight (kg)
500009	MAC 0401	32 - 40	24 - 32	65	0,6	3	0,10
500010	MAC 0501	40 - 50	24 - 32	65	0,6	3	0,10
500011	MAC 0502	40 - 50	32 - 40	65	0,6	3	0,10
500012	MAC 0632	53 - 63	32 - 40	65	0,6	3	0,10
500013	MAC 0633	53 - 63	40 - 50	90	0,6	3	0,20
500014	MAC 0893	75 - 89	40 - 50	100	0,6	3	0,40
500015	MAC 0894	75 - 89	53 - 63	100	0,6	3	0,25
500016	MAC 1153	100 - 115	40 - 50	100	0,6	3	0,45
500017	MAC 1154	100 - 115	53 - 63	100	0,6	3	0,30
500018	MAC 1155	100 - 115	75 - 89	100	0,6	3	0,45
500019	MAC 1251	110 - 125	80 - 95	120	0,6	6	0,60
500020	MAC 1252	110 - 125	100 - 115	120	0,6	6	0,60
500021	MAC 1360	121 - 136	75 - 89	100	0,6	6	0,55
500022	MAC 1361	121 - 136	80 - 95	120	0,6	6	0,65
500023	MAC 1362	121 - 136	100 - 115	120	0,6	6	0,60
500024	MAC 1363	121 - 136	110 - 125	120	0,6	6	0,60
500025	MAC 1451	130 - 145	95 - 110	100	0,6	6	0,50
500026	MAC 1452	130 - 145	110 - 125	120	0,6	6	0,65
500027	MAC 1501	135 - 150	100 - 115	100	0,6	6	0,45
500028	MAC 1602	144 - 160	110 - 125	120	0,6	6	0,75
500029	MAC 1603	144 - 160	121 - 136	120	0,6	6	0,75
500030	MAC 1701	155 - 170	100 - 115	150	0,6	6	0,95
500031	MAC 1702	155 - 170	110 - 125	120	0,6	6	0,75
500032	MAC 1703	155 - 170	130 - 145	120	0,6	6	0,75
500033	MAC 1801	160 - 180	100 - 115	150	0,6	6	1,00
500034	MAC 1802	160 - 180	110 - 125	150	0,6	6	1,10
500035	MAC 1805	160 - 180	155 - 170	150	0,6	6	1,25
500036	MAC 1922	170 - 192	110 - 125	120	0,6	6	0,85
500037	MAC 1923	170 - 192	121 - 136	120	0,6	6	0,85
500038	MAC 1924	170 - 192	144 - 160	120	0,6	6	0,85
500039	MAC 1991	180 - 200	100 - 115	150	0,6	6	1,15
500040	MAC 1993	180 - 200	121 - 136	150	0,6	6	1,20
500041	MAC 2000	180 - 200	130 - 145	150	0,6	6	1,35
500042	MAC 2001	180 - 200	155 - 170	150	0,6	6	1,30
500043	MAC 2002	180 - 200	160 - 180	150	0,6	6	1,30

Larger sizes see Mücher-Civils.



Drain Coupling

MDC

- + Coupling for same outside diameters
- + For above and below ground
- + External compression seal
- + Resistant to 0.6 bar

Drain Coupling MDC - for the external connection of all pipe systems with same outside diameters

The Drain Coupling MDC connects all plain ended pipes with same outside diameters and materials.

The Drain Coupling MDC can be used for applications above and below ground as well as inside and outside of buildings.



INSTALLATION



Position plain ended pipes.

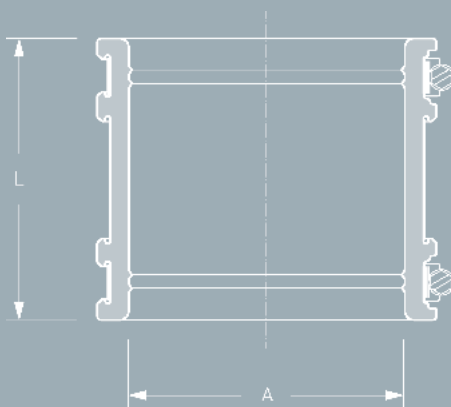


Slide coupling over one plain end.



Center coupling over joint. Tighten clamps.

DESCRIPTION



TECHNICAL SPECIFICATION

Drain Coupling MDC for the external connection of all plain ended pipe systems with same outside diameters for applications above and below ground as well as inside and outside of buildings.

Pipe 1 DN/Material _____
 Pipe 2 DN/Material _____
 Article Number _____
 Qty Price/Unit Total

Manufacturer: MÜCHER DICHTUNGEN®, D-50226 Frechen, T +49 2234 928 03-0, F-55
 Pressure Tightness: 0.6 bar water / -0.3 bar vacuum
 Jetting Resistance: 120 bar
 Sealing Material: EPDM or Nitrile (NBR) rubber with lock in place profile according to DIN EN 681-1
 Stainless Steel: AISI 304/1.4301, alternatively AISI 316/1.4404 according to DIN EN 10088-2
 Temperature Resistance: -40°C to +120°C, temporary max. temperature +160°C
 Standard/Approval: DIN EN 16397-2, European Technical Approval ETA-09/0248, CE16

**PRODUCT RANGE** 

DRAIN COUPLING MDC						
Article Number	Reference	A Size Range (mm)	L Length (mm)	resistant to (bar)	Nm	Weight (kg)
500044	MDC 32	24 - 32	65	0,6	3	0,10
500045	MDC 40	32 - 40	65	0,6	3	0,10
500046	MDC 50	42 - 50	65	0,6	3	0,10
500047	MDC 65	55 - 65	90	0,6	3	0,20
500048	MDC 75	65 - 75	90	0,6	3	0,25
500049	MDC 89	75 - 89	100	0,6	3	0,35
500050	MDC 100	85 - 100	100	0,6	6	0,40
500051	MDC 115	100 - 115	120	0,6	6	0,45
500052	MDC 120	105 - 120	120	0,6	6	0,35
500053	MDC 137	120 - 137	120	0,6	6	0,40
500054	MDC 150	125 - 150	120	0,6	6	0,45
500055	MDC 162	137 - 162	120	0,6	6	0,50
500056	MDC 175	150 - 175	120	0,6	6	0,55
500057	MDC 190	165 - 190	150	0,6	6	0,55
500058	MDC 200	175 - 200	150	0,6	6	0,55

Larger sizes see Mücher-Civils.



Coupling

CANADA PLUS MSC

- + For all pipe materials
- + For above and below ground
- + For usage with bushes
- + Resistant to 2.5 bar

Coupling Canada Plus MSC – for the external connection of all pipe systems with different or same outside diameters

The Coupling Canada Plus MSC connects all plain ended pipes within same or different dimensions and is compensating differences in outside diameters of max. 12 mm. Larger differences will require the use of bushes.

The Coupling Canada Plus MSC can be used for applications above and below ground as well as inside and outside of buildings.



INSTALLATION



Position plain ended pipes.

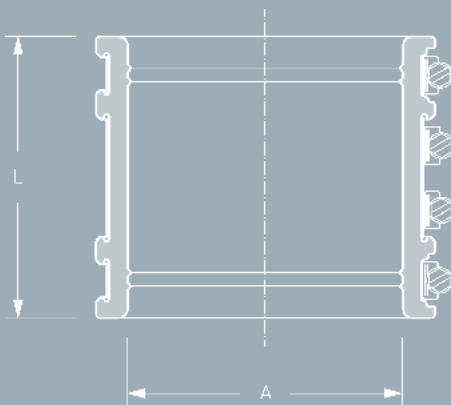


Slide coupling over one plain end.



Center coupling over joint. Tighten clamps and shear band reciprocally.

DESCRIPTION



TECHNICAL SPECIFICATION

Coupling Canada Plus MSC for the external connection of all plain ended pipe materials with different or same outside diameters for applications above and below ground as well as inside and outside of buildings. Differences in outside diameters of more than 12 mm will require the use of bushes.

Pipe 1 DN/Material
 Pipe 2 DN/Material
 Article Number
 Qty Price/Unit Total

Manufacturer: MÜCHER DICHTUNGEN®, D-50226 Frechen, T +49 2234 928 03-0, F-55
 Pressure Tightness: 2.5 bar water / -0.3 bar vacuum
 Jetting Resistance: 120 bar
 Corrosion Resistance: TOX-Technology
 Sealing Material: EPDM or Nitrile (NBR) rubber with lock in place profile according to DIN EN 681-1
 Stainless Steel: AISI 304/1.4301, alternatively AISI 316/1.4404 according to DIN EN 10088-2
 Temperature Resistance: -40°C to +120°C, temporary max. temperature +160°C
 Standard/Approval: DIN EN 16397-2, European Technical Approval ETA-09/0248, CE16



PRODUCT RANGE 

COUPLING CANADA PLUS MSC FOR ALL PIPE MATERIALS						
Article Number	Reference	A Size Range (mm)	L Length (mm)	resistant to (bar)	Nm	Weight (kg)
500059	Canada Plus MSC 65	55-65	90	2,5	6	0,25
500060	Canada Plus MSC 75	65-75	90	2,5	6	0,30
500061	Canada Plus MSC 89	75-89	100	2,5	6	0,40
500062	Canada Plus MSC 100	85-100	100	2,5	6	0,50
500063	Canada Plus MSC 115	100-115	120	2,5	10	0,80
500064	Canada Plus MSC 120	105-120	120	2,5	10	0,82
500065	Canada Plus MSC 137	120-137	120	2,5	10	0,90
500066	Canada Plus MSC 150	125-150	120	2,5	10	1,00
500067	Canada Plus MSC 162	137-162	120	2,5	10	1,05
500068	Canada Plus MSC 175	150-175	120	2,5	10	1,15
500069	Canada Plus MSC 190	165-190	150	2,5	10	1,60
500070	Canada Plus MSC 200	175-200	150	2,5	10	1,65

Larger sizes see Mücher-Civils.



Multi-Flexible-Coupling

GENIUS

- + One coupling for all pipe materials
- + For above and below ground
- + With integrated bushes
- + Resistant to 2.5 bar

Multi-Flexible-Coupling GENIUS – for the connection of all pipe systems with different or same outside diameters

The Multi-Flexible-Coupling GENIUS with integrated bushes joints all plain ended pipes within one dimension and can be used inside and outside of buildings.

The right solution always to hand: What ever pipe material needs to be jointed within one dimension, the GENIUS will always be the right solution for the contractor.



INSTALLATION



Bush at smaller pipe remains integrated – fold out and remove bush at larger pipe.

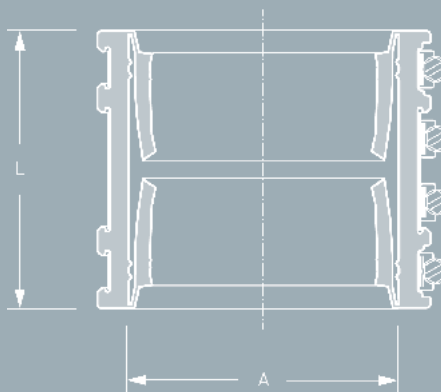


Slide GENIUS over larger pipe.



Push smaller pipe into GENIUS and tighten clamps and shear band reciprocally.

DESCRIPTION



TECHNICAL SPECIFICATION

Multi-Flexible-Coupling GENIUS with integrated bushes for the connection of plain ended pipe materials within one dimension with different or same outside diameters.

Pipe 1 DN/Material _____
 Pipe 2 DN/Material _____

Article Number _____
 _____ Qty _____ Price/Unit _____ Total

Manufacturer: MÜCHER DICHTUNGEN®, D-50226 Frechen, T +49 2234 928 03-0, F-55
 Pressure Tightness: 2.5 bar water / -0.3 bar vacuum
 Jetting Resistance: 120 bar
 Corrosion Resistance: TOX-Technology
 Sealing Material: EPDM or Nitrile (NBR) rubber with lock in place profile according to DIN EN 681-1
 Stainless Steel: AISI 304/1.4301, alternatively AISI 316/1.4404 according to DIN EN 10088-2
 Temperature Resistance: -40°C to +120°C, temporary max. temperature +160°C
 Standard/Approval: DIN EN 16397-2, European Technical Approval ETA-09/0248, CE16

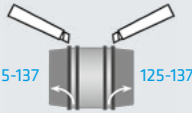
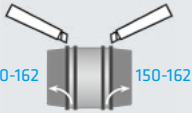
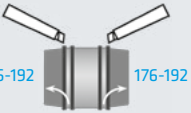









PRODUCT RANGE 

MULTI-FLEXIBLE-COUPLING GENIUS						
Article Number	Reference	A Size Range (mm)	L Length (mm)	resistant to (bar)	Nm	Weight (kg)
500071	GENIUS DN 100	108-137	120	2,5	10	1,3
500072	GENIUS DN 125	123-162	120	2,5	10	1,5
500073	GENIUS DN 150	158-192	150	2,5	10	2,4

Larger sizes see Mücher-Civils.

APPLICATION SCHEDULES 

DN 100	GENIUS-OPTION Size Range (mm)	DN 125	GENIUS-OPTION Size Range (mm)	DN 150	GENIUS-OPTION Size Range (mm)
Clay — Clay	125-137 	Clay — Clay	150-162 	Clay — Clay	176-192 
PP/PVC/PE GRP Fib. Cement Ductile Iron Cast Iron Ultra-Rib/ Twinwall	Clay 108-125 	PP/PVC/PE GRP Fib. Cement Ductile Iron Cast Iron Ultra-Rib/ Twinwall	Clay 123-150 	PP/PVC/PE GRP Fib. Cement Ductile Iron Cast Iron Ultra-Rib/ Twinwall	Clay 158-176 
PP/PVC/PE GRP Fib. Cement Ductile Iron Cast Iron Ultra-Rib/ Twinwall	PP/PVCu/PE GRP Fib. Cement Ductile Iron Cast Iron Ultra-Rib/ Twinwall	108-125 	123-150 	158-176 	108-125 



FLEXIBLE TEE

- + 90° Tee Junction to existing drains
- + For horizontal and vertical installations
- + Reliable and durable solution
- + Resistant to 0.5 bar

Flexible Tee - for the connection to existing drains

The Flexible Tee connects new to existing drains and is suitable for flush-mounting and non-buried pipe connections.

The Flexible Tee is made from a durable EPDM rubber and has a noise reducing impact on downpipes.



INSTALLATION

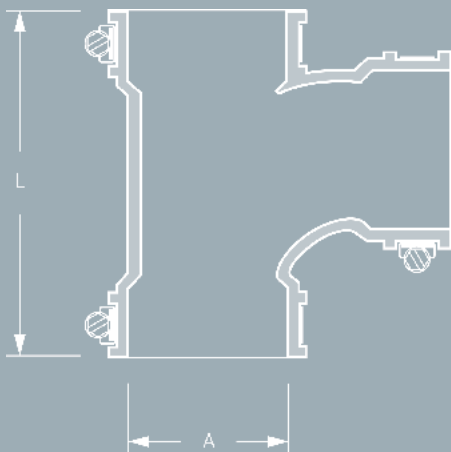


Cut off and remove pipe section. Loosen pipe support.

Position Flexible Tee in between plain ended pipes.

Insert plain ended pipes, tighten clamps and fix pipe support.

DESCRIPTION



TECHNICAL SPECIFICATION

Flexible Tee for the 90° Connection to existing drains.

Pipe 1 DN/Material _____
 Pipe 2 DN/Material _____
 Pipe 2 DN/Material _____
 Article Number _____
 Qty Price/Unit Total

Manufacturer: MÜCHER DICHTUNGEN®, D-50226 Frechen, T +49 2234 928 03-0, F-55
 Pressure Tightness: 0.6 bar water / -0.3 bar vacuum
 Sealing Material: EPDM rubber according to DIN EN 681-1
 Stainless Steel: AISI 304/1.4301, alternatively AISI 316/1.4404 according to DIN EN 10088-2
 Temperature Resistance: -40°C to +120°C, temporary max. temperature +160°C
 Standard/Approval: DIN EN 681-1, CE16



PRODUCT RANGE 

FLEXIBLE TEE						
Article Number	Reference	A Size Range (mm)	L Length (mm)	resistant to (bar)	Nm	Weight (kg)
500074	Flexible Tee 50	40-50	125	0,6	6	0,20
500075	Flexible Tee 60	50-60	125	0,6	6	0,30
500076	Flexible Tee 90	78-90	200	0,6	6	0,60
500077	Flexible Tee 118	106-118	245	0,6	6	1,10



FLEXIBLE ELBOW

- + 90° Elbow
- + For horizontal and vertical installations
- + Reliable and durable solution
- + Resistant to 0.5 bar

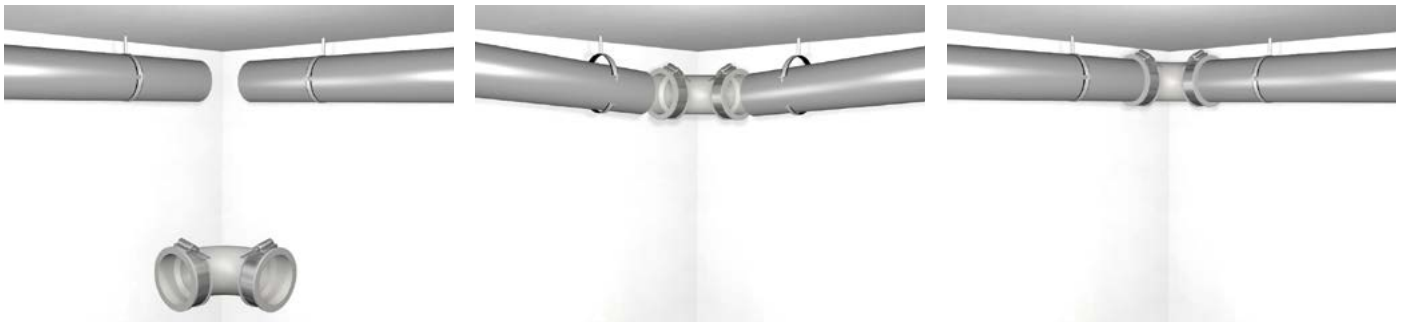
Flexible Elbow - for the repair of existing drains

The Flexible Elbow is used for the repair of existing drains and is suitable for flush-mounting and non-buried pipe connections.

The Flexible Elbow is made from a durable EPDM rubber and has a noise reducing impact on downpipes.



INSTALLATION

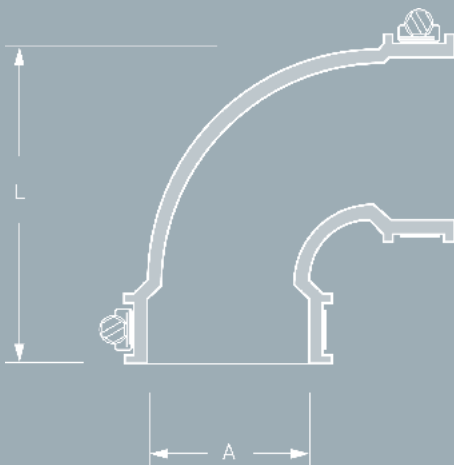


Cut off and remove pipe section. Loosen pipe support.

Position Flexible Elbow in between plain ended pipes.

Insert plain ended pipes, tighten clamps and fix pipe support.

DESCRIPTION



TECHNICAL SPECIFICATION

Flexible Elbow 90° for the repair of existing drains.

Pipe 1 DN/Material _____
 Pipe 2 DN/Material _____

Article Number _____
 ___ Qty ___ Price/Unit ___ Total

Manufacturer: MÜCHER DICHTUNGEN®, D-50226 Frechen, T +49 2234 928 03-0, F-55
 Pressure Tightness: 0.6 bar water / -0.3 bar vacuum
 Sealing Material: EPDM rubber according to DIN EN 681-1
 Stainless Steel: AISI 304/1.4301, alternatively AISI 316/1.4404 according to DIN EN 10088-2
 Temperature Resistance: -40°C to +120°C, temporary max. temperature +160°C
 Standard/Approval: DIN EN 681-1, CE16



PRODUCT RANGE 

FLEXIBLE ELBOW						
Article Number	Reference	A Size Range (mm)	L Length (mm)	resistant to (bar)	Nm	Weight (kg)
500078	Flexible Elbow 50	40-50	95	0,6	6	0,10
500079	Flexible Elbow 60	50-60	140	0,6	6	0,20
500080	Flexible Elbow 90	78-90	190	0,6	6	0,50
500081	Flexible Elbow 118	106-118	210	0,6	6	0,80



END CAP

- + Sealing of pipe ends
- + For use inside and outside of buildings
- + Clamps in stainless steel
- + Resistant to 0.6 bar

End Cap – for the long and short term sealing of pipe ends

The End Cap is used for the long and short term sealing of pipe ends to prevent ingress of dirt or water.

The End Cap can be used inside and outside of building.



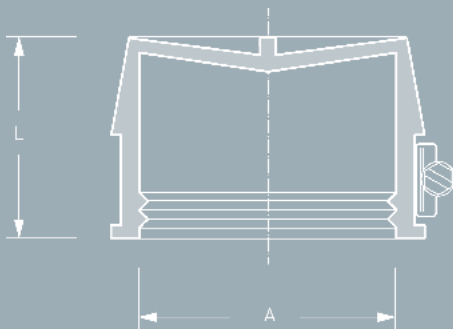
INSTALLATION



Slide End Cap over pipe end.

Tighten clamps.

DESCRIPTION



TECHNICAL SPECIFICATION

End Cap for the long and short term sealing of pipe ends.

Pipe DN/Material _____

Article Number _____

___ Qty ___ Price/Unit ___ Total

Manufacturer: MÜCHER DICHTUNGEN®, D-50226 Frechen, T +49 2234 928 03-0, F-55

Pressure Tightness: 0.6 bar water

Sealing Material: EPDM rubber according to DIN EN 681-1

Stainless Steel: AISI 304/1.4301, alternatively AISI 316/1.4404 according to DIN EN 10088-2

Temperature Resistance: -40°C to +120°C, temporary max. temperature +160°C

Standard/Approval: DIN EN 681-1, CE16



PRODUCT RANGE 

END CAP						
Article Number	Reference	A Size Range (mm)	L Length (mm)	resistant to (bar)	Nm	Weight (kg)
500082	End Cap 1	45-55	40	0,5	6	0,10
500083	End Cap 2	56-66	40	0,5	6	0,10
500084	End Cap 3	80-90	40	0,5	6	0,20
500085	End Cap 4	105-115	40	0,5	6	0,20
500086	End Cap 5	130-140	40	0,5	6	0,20
500087	End Cap 6	155-165	40	0,5	6	0,30



ROLL-RING

- + Connection to sockets without seal
- + Socket connection remains
- + Reliable and durable solution
- + Resistant to 0.5 bar

Roll-Ring - for the connection of spigots from all pipe materials to sockets without seal

The Roll-Ring connects spigots from all materials to sockets without seal (e.g. clay or concrete).

By using the Roll-Ring there is no need for cutting off the socket and connecting with a flexible coupling.

The Roll-Ring is individually produced to the customer's requirements, to provide the right compression for effective sealing.



INSTALLATION



Do not use lubricant.

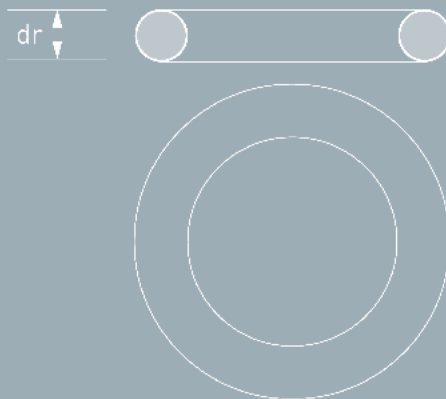


Position Roll-Ring in front of socket.



Push spigot into socket.

DESCRIPTION



TECHNICAL SPECIFICATION

Roll-Ring for the connection of spigots from all pipe materials to sockets without seal.

Pipe 1 DN/Material _____
 Socket Internal Ø (mm) _____
 Pipe 2 DN/Material _____
 Outside Ø (mm) _____

Article Number _____
 ___ Qty ___ Price/Unit ___ Total

Manufacturer: MÜCHER DICHTUNGEN®, D-50226 Frechen, T +49 2234 928 03-0, F-55
 Pressure Tightness: 0.5 bar water / -0.3 bar vacuum
 Sealing Material: SBR rubber according to DIN EN 681-1
 Temperature Resistance: -40°C to +80°C, temporary max. temperature +130°C
 Standard/Approval: DIN EN 681-1, CE06



PRODUCT RANGE 

ROLL-RING								
Article Number	Reference	DN	Pipe Material Spigot	Outside Ø (mm)	Internal Socket Ø (mm)	dr String Strength (mm)	resistant to (bar)	Weight (kg)
500088	Rollring Clay DN 100 16 mm	100	Clay	131	150-160	16	0,5	0,1
500089	Rollring Clay DN 100 18 mm	100	Clay	131	151-161	18	0,5	0,1
500090	Rollring Clay DN 100 20 mm	100	Clay	131	152-162	20	0,5	0,1
500091	Rollring Clay DN 100 22 mm	100	Clay	131	153-163	22	0,5	0,1
500092	Rollring SML/PVC DN 100 32 mm	100	SML/PVC	110	156-162	32	0,5	0,3
500093	Rollring Clay DN 125 18 mm	125	Clay	159	178-190	18	0,5	0,1
500094	Rollring Clay DN 125 20 mm	125	Clay	159	179-191	20	0,5	0,1
500095	Rollring Clay DN 125 22 mm	125	Clay	159	180-192	22	0,5	0,1
500096	Rollring Clay DN 125 24 mm	125	Clay	159	181-193	24	0,5	0,2
500097	Rollring SML DN 125 34 mm	125	SML	135	184-190	34	0,5	0,3
500098	Rollring PVC DN 125 43 mm	125	PVC	125	184-190	43	0,5	0,5
500099	Rollring Clay DN 150 20 mm	150	Clay	186	207-219	20	0,5	0,1
500100	Rollring Clay DN 150 22 mm	150	Clay	186	208-220	22	0,5	0,2
500101	Rollring Clay DN 150 24 mm	150	Clay	186	209-221	24	0,5	0,2
500102	Rollring Clay DN 150 26 mm	150	Clay	186	210-222	26	0,5	0,3
500103	Rollring FC DN 150 34 mm	150	Fibre Cement	176	214-222	34	0,5	0,4
500104	Rollring SML/PVC DN 150 40 mm	150	SML/PVC	160	215-223	40	0,5	0,5
500105	Rollring Clay DN 200 22 mm	200	Clay	242	265-279	22	0,5	0,2
500106	Rollring Clay DN 200 24 mm	200	Clay	242	266-280	24	0,5	0,3
500107	Rollring Clay DN 200 26 mm	200	Clay	242	267-281	26	0,5	0,3
500108	Rollring SML DN 200 46 mm	200	SML	210	275-283	46	0,5	1,1
500109	Rollring PVC DN 200 51 mm	200	PVC	200	274-282	51	0,5	1,1

Further sizes are available on request. Roll-Rings are available in string strengths 10-51 mm.

LUBRICANT



- + Jointing forces are minimised
- + Compatibility with other sealing materials
- + For plastic pipes
- + Various package sizes

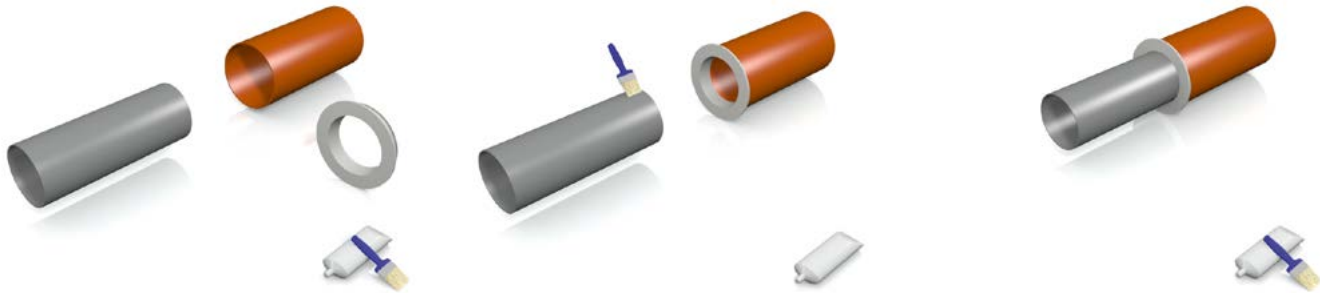
Lubricant - minimizing the jointing forces for plastic pipe laying

Lubricant is used to minimize the jointing forces when laying plastic pipes.

Lubricant is compatible with other sealing materials.



INSTALLATION



Clean socket and spigot.

Apply lubricant to socket and spigot.

Push pipes together.

TECHNICAL SPECIFICATION

Lubricant for minimizing the jointing forces for plastic pipe laying.

Pipe Material _____

Package Size _____

Article Number _____

___ Qty ___ Price/Unit ___ Total

Manufacturer: MÜCHER DICHTUNGEN®, D-50226 Frechen, T +49 2234 928 03-0, F-55

Scope of Application: Plastic Pipes (White)

Packaging Size: White 250 g Tube, 500 g Tube, 1 kg Can

Standard/Approval: CE06, Safety Data Sheet (EU) No. 1907/2006



PRODUCT RANGE 

LUBRICANT				
Article Number	Reference	Pipe Material	Content Packaging	Weight (kg)
500110	Lubricant White 250 g	for plastic pipes	250 g Tube	0,3
500111	Lubricant White 500 g	for plastic pipes	500 g Tube	0,5
500112	Lubricant White 1 kg	for plastic pipes	1 kg Can	1,1

THE MÜCHER-COMMITMENT 



CONSULTING

+



DELIVERY

+



INNOVATION

+



AVAILABILITY

+



SECURITY

MÜCHER DICHTUNGEN GmbH & Co. KG
Europaallee 43
D-50226 Frechen

T +49 2234 928 03-0
F +49 2234 928 03-55
sales@muecher.com

www.muecher.com 

CIVILS

PLUMBING