



MÜCHER DICHTUNGEN®



TECHNICAL BROCHURE
CIVILS

www.muecher.com 



ABOUT MÜCHER	04	Standard Coupling Canada Plus, Type 2B	20
THE MÜCHER-COMMITMENT	05	for all pipe materials	
UNIQUE SELLING POINTS		Bush	23
TOX-Technology	06	BML-Connector	24
Advanced Bolting System	07	Extra Wide Coupling Canada TITAN XL	26
“Lock in Place“ Rubber Profile	08	Coupling Kit EASY-REP	30
MATERIAL SPECIFICATIONS		Adaptor Coupling MAC	32
Stainless Steels	09	Drain Coupling MDC	36
Caoutchouc Elastomers	10	JOINTS & RINGS	
STANDARDS & APPROVALS		MULTI-STEP	38
Quality Management System, CE-Marking	12	Roll-Ring	40
European Standard DIN EN 16397	12	P-Ring	42
European Technical Approval	13	Ü-P-Ring	44
Construction Products Regulation	13	M-P-Ring	46
COUPLINGS & ADAPTORS		Ü-Ring	48
Multi-Flexible-Coupling GENIUS	14	A-Ring	50
Coupling Canada Plus, Type 2A for clay pipes	16	SEALS FOR CONCRETE	
Coupling Canada Plus, Type 2B for clay pipes	18	Wedge-Shaped Seal MKG	52
		BKL Jointing Element	54
		Z-Joint for Road Gullies	56



LATERAL CONNECTIONS	
Sewer Saddle T-FLEX, Core Drill	58
Lateral Connector LTC, Core Drill	60
Lateral Connector M40	62
Lateral Connector M140	64
Lateral Connector M55	66
B-Ring	68

ACCESSORIES	
Non-Rattle Ring	70
Antifreeze Ring for Hydrants	72
Lubricant	74
Shuttering-Kit for Manhole Covers	76
End Cap	77

SERVICE	
Pipe Table	78
Ordering & Delivery	79

Mücher Dichtungen is part of the California based worldwide Mission Rubber group of companies; **the originators of the rubber flexible coupling over 60 years ago.**

Since 1955 Mücher is developing, manufacturing and distributing couplings and seals for all pipe materials used in the low pressure civils and drainage industry. In general Mücher products are used when two pipes with both different diameters and materials need jointing. This requires a custom-made consulting to find a reliable long-term solution.

Whereas Mücher's core business used to be in the civils and drainage industry only, nowadays the business fields have been extended and include both plumbing and industry.

Due to working closely with various pipe manufactures, combined with the long-term presence on the European market place a product range has been formed that offers a reliable and permanent solution for almost any possible application. Especially the sealing technologies for repair solutions require a wide knowledge and expertise for all the different pipe materials and connection systems.

The heart of our manufacturing is the area of customized solutions where Mücher with its 60 year's experience is always identifying the right sealing system, is manufacturing the correct solution and is then supplying to site on time.



The majority of the product range is manufactured at the European headquarters in Frechen, near Cologne. Customized solutions for the UK market are also manufactured at Mücher's Sheffield based daughter company. Mücher and its distributors are present in over 30 different countries.

Together with its customers Mücher is permanently developing new and innovative products for below and above ground applications. Mücher's products are known for their high quality, for being easy to install and for solving problems on site. A good example of a new product development is the Multi-Flexible-Coupling GENIUS.

New product developments are tested in Mücher's own test laboratory against all requirements resulting from the relevant standard. Any new developed seal will run through both material and functional tests. Before any product launch the new developed seal will be tested on live sites to ensure it fulfills all requirements and ease of installation on site. Therefore it is assured that only products that meet the high Mücher quality standard will exit our factory.

Since 1993 Mücher has ran a quality management system and is certified to DIN EN ISO 9001:2008.



THE MÜCHER-COMMITMENT SUMMARIZES THE KEY COMPETENCE OF THE COMPANY.



CONSULTING



DELIVERY



INNOVATION



AVAILABILITY



SECURITY

CONSULTING

You can trust us – we are consulting you the right way! Both commercial and technical consulting have got the highest priority for Mücher. It is our ambition to offer solutions to our customers that are both technically reliable and commercially sustainable. The competence of our Sales & Technical team is outstanding and will continue to develop through training courses and further education.

The guideline to improve our support and consulting further is described in our quality management system according to DIN EN ISO 9001:2008 which was launched over 20 years ago.

DELIVERY

Ordered a.m. – supplied next day! Any a.m. incoming standard sized orders can be supplied next day either for stock or directly to site. Our operational processes from consulting to supplying is completed within a short period of time.

INNOVATION

Our innovations help improving problems on site! It is our companies aim to develop new products and to improve and further develop the existing range of products through rivaling new and innovative technologies. A good example is the initial launch of the TOX-Technology to the sewerage industry. The TOX-Technology eliminates the corrosion of the stainless steel components and increases the life circle.

AVAILABILITY

100% availability creates confidence! Our entire product range is stocked in bulk. This includes both core range items with a high turn around as well as special items with a lower demand. The manufacturing department is the heart of our company. **This is where we manufacture bespoke made large standard couplings and bushes on special customer demands and on time.**

Our 100% availability and delivery capacity allows us to offer a proper solution for almost any problem within the sewerage industry.

SECURITY

On the safe side with Mücher!

All our products comply with and exceed the requirements of the latest DIN and European standards as well as national and international approvals. If it says MÜCHER you can depend on a safe installation process for the installer.

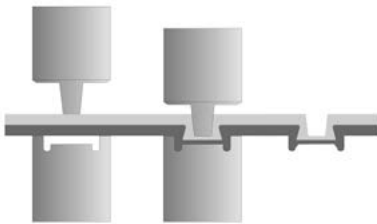
The European Technical Approval ETA-09/0248 assumes **a life circle for Mücher couplings of 50 years, providing proper packaging, stocking and installation.**

INNOVATION

Couplings and other Muecher joints and rings are constantly developed further, both in product design and material. They are characterised by quality, long-life cycle and user friendliness. **Our innovations are in the detail!**

TOX-TECHNOLOGY

Traditional shear band fabrication entails spot welding of clamps to the shear band. Whereas with TOX-TECHNOLOGY heat created during the welding process actually burns the stainless steel. The composition of the stainless steel is attacked and intercrystalline corrosion can result at the welding points.

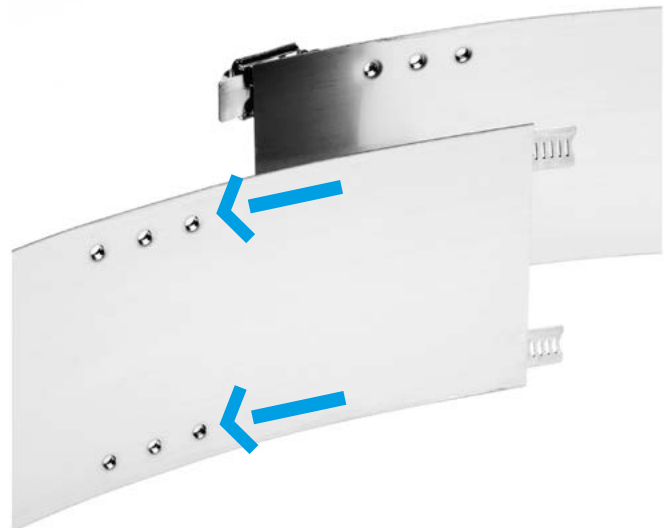
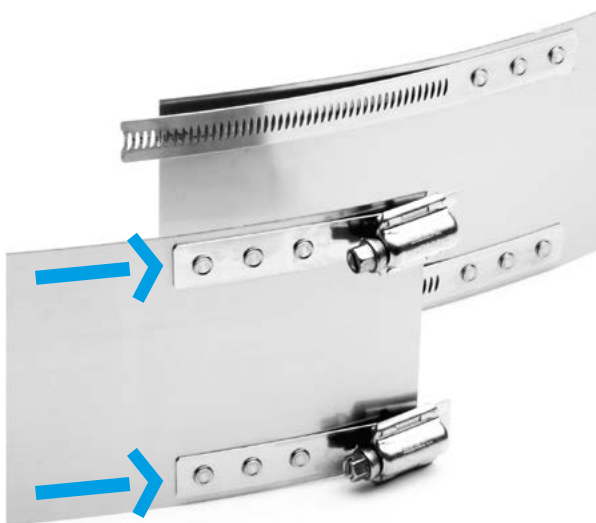


The shear bands on Muecher couplings incorporate the latest in stainless steel fastening techniques:

TOX-TECHNOLOGY (Clinching process, no spot welds)

The negative aspects associated with spot welding are eliminated in this advance process, yet the bond meets or exceeds all relevant tensile strength and shear requirements.

Properties	TOX-Point	Spot Weld
Corrosion	none	yes
Structural Change	none	yes
Dynamic Resilience	excellent	not perfect
Static Resilience	good	excellent
Energy Input	minimal	extremely high
Environment friendly manufacturing	excellent	bad (steams)



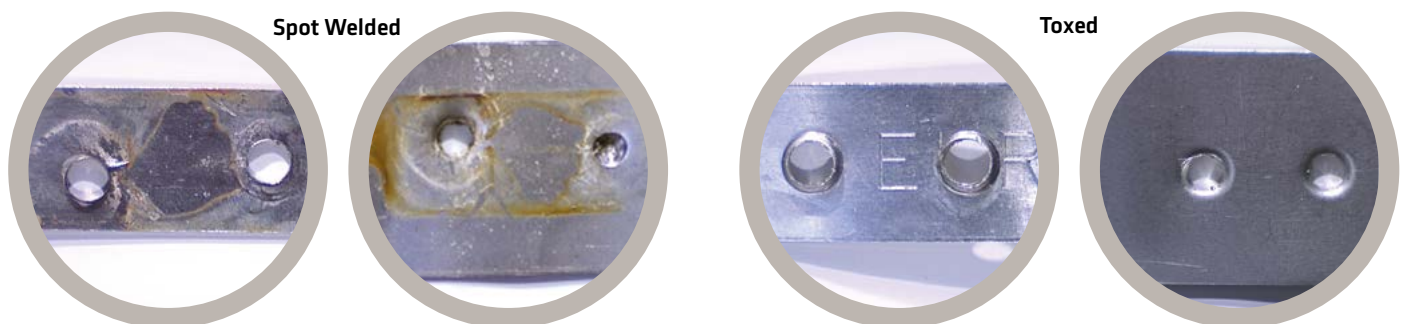


SALT SPRAY TEST SHOWS DIFFERENT CORROSION RESISTANCES

In a salt spray test according to DIN 50 021 SS (neutral) the different corrosion resistances of spot welded and toxed connection were compared.

Test Certificate No. 22000197 MPA NRW

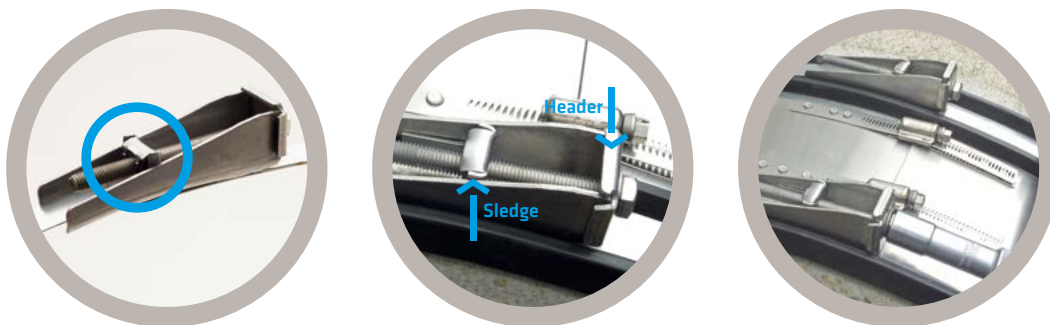
After only a few days a clear corrosion was visible on the spot welded test blocks. The toxed (clinched) stainless steel bands did not show any corrosion after 504 hours (test ended after 3 weeks).



ADVANCED BOLTING SYSTEM

All of Mücher's large diameter couplings (from MSC 635) and all extra wide couplings are fitted with the all new patent registered advanced bolting system. Choosing the right clamp type (hi-torque, medium duty or bolted) and applying the right tightening torque is essential for large diameter couplings.

The bolting system is manufactured from stainless steel grade 1.4401 (AISI 316). It is positioned on the EPDM rubber sleeve and ensures the necessary compression to form a permanently sealed joint.



The purpose of this new development is to make the installation of the coupling to the pipe considerably quicker and much easier. The new bolting system has been engineered so that the sledge runs through the header casing, eliminating any protrusion of the bolt head.

This enables the installer to use a standard 13mm socket wrench which will reduce installation time by more than 50%.

Compared to other bolting systems, the advanced Mission bolting systems offers the following advantages:

- Even better sealing performance by wider clamps
- Easier installation by sledge system running through header
- Twice as quick to install than standard systems
- No special tools required, just use a standard 13 mm socket wrench
- Less risk of injury, therefore more health and safety conscious



„LOCK IN PLACE“ RUBBER PROFILE

Mücher rubber sleeves are fitted with a unique rubber profile. The “lock in place” profile made from EPDM rubber ensures that the clamps and shear band are properly positioned on the sleeve and remain firmly in place during transit, stocking or installation on site.

The necessary compression of the rubber sleeve can only be guaranteed by a proper positioning of the stainless steel components.

Furthermore to the external based “lock in place” profile, the internal based sealing lines achieve a better sealing effect. Through the stepped sealing lines, additional EPDM sealing material can be compressed. This is of special advantage for sewerage pipes with a rough surface such as concrete pipes.





STAINLESS STEELS

Stainless steel refers to a range of iron based alloys which rely on their chromium content for resistance to corrosion. Research in a number of countries worldwide has shown that in normal soils austenitic stainless steel with a 17% chromium and 9% nickel content gives satisfactory performance, with a design life in excess of 100 years.

Whereas in poorly drained gravels, industrial or colliery spoil and in cases where the ground or groundwater contains chlorides (exceeding 1000 ppm) pitting of the steel can occur. In these circumstances the application of a protective wrapping such as “Denso tape” will give adequate protection. Alternatively, in these circumstances an austenitic stainless steel containing molybdenum (minimum 2%) will give better corrosion resistance without the need for additional protection.

Mücher supplies two grades of austenitic stainless steel to suit either normal conditions or conditions when additional corrosion resistance is required.

For use in normal conditions Mücher’s standard products use components manufactured from grade 1.4301 (AISI 304) austenitic stainless steel to DIN EN 10088-2.

For those conditions requiring higher corrosion resistance then components manufactured from grade 1.4401 (AISI 316) austenitic stainless steel to DIN EN 10088-2 is available, too. This grade contains 2% molybdenum and is especially suitable for marine environments.

DIN EN 100 88	Trade Name	International Term	COMPOUNDS-%			
			Carbon (C)	Chromium (Cr)	Nickel (Ni)	Molybdenum (Mo)
1.4301	V2A	BS 304 / AISI 304	≤ 0,07	17,0-19,0	8,5-10,5	-
alternatively						
1.4307	V2A	BS 304 / AISI 304	≤ 0,03	17,5-19,5	8,0-10,0	-
1.4303	V2A	BS 304 / AISI 304	≤ 0,01	17,0-19,0	11,0-13,0	-
1.4567	V2A	BS 304 / AISI 304	≤ 0,04	17,0-19,0	8,5-10,5	-
1.4404	V4A	BS 316 / AISI 316	≤ 0,03	16,5-18,5	10,0-13,0	2,0-2,5
alternatively						
1.4401	V4A	BS 316 / AISI 316	≤ 0,08	16,5-18,5	10,5-13,5	2,0-2,5
1.4571	V4A	BS 316 / AISI 316	≤ 0,08	16,5-18,5	10,5-13,5	2,0-2,5

The welding of stainless steel requires special competence and care as the steel can potentially corrode, resulting in an intercrystalline attack.

Since 2001 Mücher successfully applies the TOX-Technology which makes corrosion almost impossible.



CAOUTCHOUC ELASTOMERS

Rubber is a very flexible and elastic material with a high restoring force. In the technical application this material is officially named elastomer.

The raw materials are natural or synthetic elastomers. A rubber mixture contains different additives. Through addition of heat, rubber becomes vulcanised. This process enables the elasticity of rubber. Deformation within the elastic range can be repeated limitless times without the change of the initial shape. As soon as the deformation forces are released, the elastomer returns back into its initial shape.

Elastomers are resistant against many acids, leaches and aromatic hydrocarbons which appear in the private, public and industrial sewage. For the sealing technology it is important to estimate this resistance, knowing the conditions of the joint such as the concentration of the medium, temperature, pressure as well as the static and dynamic strains.

The ideal elastomer material which is resistant to all gases and fluids does not exist yet. It is necessary to select the material which is the most suitable to meet the requirements demanded.

The most common elastomer types used in the sewage technology are EPDM, SBR, NBR, NR, IIR and IR which all meet the current standards, such as DIN 4060 and DIN EN 681.

RESISTANCE OF ELASTOMERS

The following listed values are for guidance only. The values and characteristics cannot generally be transferred to all operating conditions.

PROPERTIES	EPDM	SBR	NBR	NR	IIR	IR
Ozone Resistance	1	4	4	4	2	4
Oil Resistance	4	5	2	6	6	6
Fuel Resistance	5	6	2	6	6	6
Acid Resistance	1	3	4	3	2	3
Leach Resistance	1	3	4	3	2	3
Gas Permeability	4	4	2	5	1	5
Electric Resistance	2	2	5	1	2	1
Rebound Resilience	3	3	3	2	6	2
Tear Strength	3	2	2	1	2	1
Temperature Resistance	-40° to + 120°C	-40° to + 80°C	-30° to + 100°C	-40° to + 80°C	-30° to + 120°C	-30° to + 120°C
Temporary max. Temperature	+ 160°C	+ 130°C	+ 130°C	+ 130°C	+ 180°C	+ 160°C

1 = excellent 2 = good 3 = satisfactory 4 = sufficient 5 = poor 6 = fail



SHORT DISCRIPTION OF CAOUTCHOUC TYPES

EPDM (Ethylene - Propylene - Diene - Monomer)

Contains extraordinary resistance to oxygen, ozone and further atmospheric influences. UV-light resistant.

SBR (Styrene Butadiene Rubber)

One of the major synthetic rubbers with similar properties as natural rubber (NR). Compared to NR the abrasion resistance of SBR is superior but with an associated deterioration of the elasticity.

NBR (Acrylonitrile Butadiene Rubber)

The basis for NBR is a mixture of acrylonitrile and butadiene. The higher the acryl percentage, the better the resistance against mineral oils and fuels but with an associated deterioration of the elasticity and the cold flexibility.

NR (Natural Rubber)

The raw material is latex milk, extracted from caoutchouc trees. Unlike several synthetic rubbers, NR particularly possesses excellent elastic qualities.

IIR (Butyl Rubber)

Butyl is a mixture of polymer, isobutylene and approximately 3% isoprene. It has excellent aging - and weathering resistances as well as very low gas permeability.

IR (Isoprene Rubber)

Excellent elasticity and good electric resistance. Suits well for cut-offs with other caoutchouc types.



QUALITY MANAGEMENT SYSTEM, CE-MARKING

Since 1993 Mücher's quality management system according to DIN EN ISO 9001:2008 is the guideline for manufacturing, product development, sales and distribution. Developing the quality management system further is one of Mücher's strategic aims.

The compliance of Mücher products with all EU standards and approvals allows Mücher to CE-mark its products. With the CE-marking, Mücher declares that all products meet the requirements of the following standards both for functional and material requirements:



EUROPEAN STANDARD

DIN EN 16397

Since January 2015 flexible couplings have been standardized for the first time ever in the DIN EN 16 397. Until 2014 couplings with and without shear band were only standardized in the DIN EN 295-4 when used with clay pipes.

The scope of application has now sizably extended to the following:

- Couplings can be used for all pipe materials for non-pressure drainage and sewage systems
- For above and below ground applications
- For installation inside and outside of buildings
- For repair purposed and connecting of different pipe systems

The new European Standard for flexible couplings is defined into two parts:

Part 1: **Performance requirements**, DIN EN 16397-1

Part 2: **Characteristics and testing** for metal banded flexible couplings, adaptors and bushes, DIN EN 16397-2

As all relevant pipe standards and technical regulations have been included in the new standard, the scope of testing has considerably increased. Mücher secures its high product quality and the compliance with the standards by external testing at MPA (Materialprüfungsamt) in Dortmund, as well as by internal tests in the Mücher test laboratory. **Therefore Mücher is able to proof test results and compliances although the external quality control is no longer obligatory.**



EUROPEAN TECHNICAL APPROVAL

The European Technical Approval ETA-09/0248 has got the second highest standing after a European harmonized standard.

Canada Plus Type 2B Standard Couplings, Bushes, Adaptor Couplings MAC, as well as Drain Couplings MDC have been approved on a European level for applications below and above ground for both buried and non-buried pipes of all materials.

Centre Scientifique et Technique du Bâtiment
84 avenue Jean Jaurès
Champs sur Marne
F-77447 Marne-la-Vallée Cedex 2
Tel. : (33) 01 64 68 52 52
Fax : (33) 01 60 05 70 37

Autorisé et validé conformément à l'article 10 de la directive 89/105/EEC du Conseil, du 21 décembre 1988, relative au rapprochement des dispositions législatives, réglementaires et administratives des États membres concernant les produits de construction.

CSTB
le futur en construction
MEMBRE DE L'EOTA

Agrément Technique Européen ETA-09/0248
(English language translation, the original version is in french language)

Trade names:
Noms commerciaux :
- FLEX-SEAL Plus (NORHAM Company)
- CANADA Plus (MÜCHER DICHTUNGEN GMBH & CO KG)

Holder of approval:
Titulaire :
Société NORHAM
ZA Les Druisieux
F-26260 Saint-Donat-sur-l'Herbasse

Generic type and use of construction product:
Type générique et utilisation prévue du produit de construction :
Elastomeric flexible couplings, with an eventually stainless steel shear band used to assembly sewer or drainage pipe.
Raccords flexibles en élastomère, éventuellement pourvus d'une bande de renfort en acier inoxydable, destinés à assembler différents types de canalisations d'assainissement.

Validity from / to:
Validité du :
au :
15 January 2013
15 January 2018

Manufacturing plant:
Usines de fabrication :
- Société NORHAM
ZA Les Druisieux
F-26260 Saint-Donat-sur-l'Herbasse
- MÜCHER DICHTUNGEN GMBH & CO KG
Saalestrasse
D-58256 Ennepetal

Le présent Agrément technique européen contient :
This European Technical Approval contains:
14 pages including 4 annexes which form an integral part of the document.
14 pages incluant 4 annexes faisant partie intégrante du document.

EOTA Organisation pour l'Agrément Technique Européen
European Organisation for Technical Approvals



The EOTA (European organization for technical approvals) is based in Brussels and has developed this approval in partnership with the French CSTB (Centre Scientifique et Technique du Bâtiment).

27 European testing boards accepted and validated the European Technical Approval ETA-09/0248 for their domestic markets.

All testing boards mentioned below are members of the EOTA.

EOTA MEMBERS		EOTA MEMBERS	
	Austria : ÖSTERREICHISCHES INSTITUT FÜR BAUTECHNIK (OIB)		ETA-Latvia Building Department of the Ministry of Economics
	Belgium UNION BELGE POUR L'AGREMENT TECHNIQUE DANS LA CONSTRUCTION (UBAtc) asbl - BELGISCHE UNIE VOOR DE TECHNISCHE GOEDKEURING IN DE BOUW (BUigb) vzw		Statybos Produkcijos Serifikavimo Centras (SPSC) SE Certification Centre of Building Products
	Cyprus CENTRAL LABORATORY - PUBLIC WORKS DEPARTMENT		LABORATOIRE DES PONTS ET CHAUSSEES
	Czech Republic Technický a zkušební ústav stavební Praha, s.p. (TZUS) Technical and Test Institute for Construction		STICHTING BOUWKWALITEIT (SBK)
	Denmark ETA-DANMARK A/S		SINTEF Building and Infrastructure (SINTEF)
	Estonia Tallinna Tehnikajükkool Tallinn University of Technology (TUT)		Instytut Techniki Budowlanej (ITB)
	Finland VTT Expert Services Oy		LABORATORIO NACIONAL DE ENGENHARIA CIVIL (LNEC)
	France CENTRE SCIENTIFIQUE ET TECHNIQUE DU BATIMENT (CSTB)		Technický a Skúšobný Ústav Stavebný (TSUS) Building Testing & Research Institute
	Germany DEUTSCHES INSTITUT FÜR BAUTECHNIK (DIBt)		ZAVOD ZA GRABENIŠTVO SLOVENIJE (ZAG)
	Greece HELLENIC ORGANIZATION FOR STANDARDISATION (ELOT)		INSTITUTO DE CIENCIAS DE LA CONSTRUCCIÓN EDUARDO TORROJA (IETcc)
	Hungary ÉPÍTÉSÜGYI MINOSEGELLENORZO INNOVÁCIÓS KHT (EMI Kht) Non-profit Company for Quality Control and Innovation in Building		SWEDISH INSTITUTE FOR TECHNICAL APPROVAL IN CONSTRUCTION (SITAC)
	Iceland INNOVATION CENTRE ICELAND (NMI)		SWISS FEDERAL LABORATORIES FOR MATERIALS TESTING AND RESEARCH (EMPA)
	Ireland IRISH AGREEMENT BOARD (IAB) NATIONAL STANDARDS AUTHORITY OF IRELAND		BRITISH BOARD OF AGREEMENT (BBA)
	Italy ISTITUTO PER LE TECNOLOGIE DELLA COSTRUZIONE (ITC)		

CONSTRUCTION PRODUCTS REGULATION

The European construction products regulation is in place since 01.07.2013.

As a manufacturer of building and construction products, Mücher Dichtungen® declares the conformity of all products according to the European standards and approvals in its declaration of performance.



Multi-Flexible-Coupling

GENIUS

- + One coupling for all pipe materials
- + For above and below ground
- + With integrated bushes
- + Resistant to 2.5 bar

Multi-Flexible-Coupling GENIUS - for the connection of all pipe systems with different or same outside diameters

The Multi-Flexible-Coupling GENIUS with integrated bushes connects all plain ended pipes within one dimension and can be used inside and outside of buildings.

The right solution always to hand: What ever pipe material needs to be jointed within one dimension, the GENIUS will always be the right solution for the contractor.



INSTALLATION



Bush at smaller pipe remains integrated – fold out and remove bush at larger pipe.

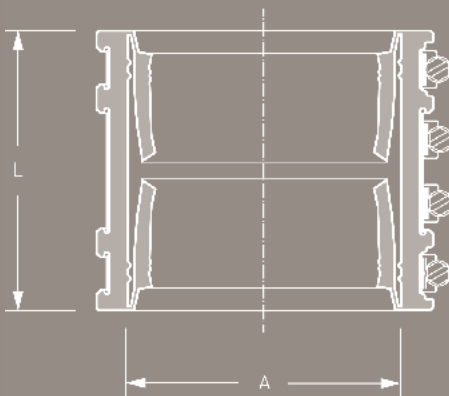


Slide GENIUS over larger pipe.



Push smaller pipe into GENIUS and tighten clamps and shear band reciprocally.

DESCRIPTION



TECHNICAL SPECIFICATION

Multi-Flexible-Coupling GENIUS with integrated bushes connects all plain ended pipe materials within one dimension with different or same outside diameters.

Pipe 1 DN/Material _____
 Pipe 2 DN/Material _____
 Article Number _____
 ___ Qty ___ Price/Unit ___ Total

Manufacturer: MÜCHER DICHTUNGEN®, D-50226 Frechen, T +49 2234 928 03-0, F-55
 Pressure Tightness: 2.5 bar water / -0.3 bar vacuum
 Jetting Resistance: 120 bar
 Corrosion Resistance: TOX-Technology
 Sealing Material: EPDM or Nitrile (NBR) rubber with lock in place profile according to DIN EN 681-1
 Stainless Steel: AISI 304/1.4301, alternatively AISI 316/1.4404 according to DIN EN 10088-2
 Temperature Resistance: -40°C to +120°C, temporary max. temperature +160°C
 Standard/Approval: DIN EN 16397-2, European Technical Approval ETA-09/0248, CE15



PRODUCT RANGE >>

MULTI-FLEXIBLE-COUPLING GENIUS						
Article Number	Reference	A Size Range (mm)	L Length (mm)	resistant to (bar)	Nm	Weight (kg)
84000100	GENIUS DN 100	108-137	120	2,5	10	1,3
84000125	GENIUS DN 125	123-162	120	2,5	10	1,5
84000150	GENIUS DN 150	158-192	150	2,5	10	2,4
84000200	GENIUS DN 200	198-265	150	2,5	10	3,2
84000250	GENIUS DN 250	248-326	150	2,5	13	6,1
84000300	GENIUS DN 300	313-385	190	2,5	13	8,1

APPLICATION SCHEDULES >>

DN 100		GENIUS-OPTION Size Range (mm)		DN 125		GENIUS-OPTION Size Range (mm)		DN 150		GENIUS-OPTION Size Range (mm)	
Clay	-	Clay	125-137	Clay	-	Clay	150-162	Clay	-	Clay	176-192
PP/PVC/PE GRP Fib. Cement Ductile Iron Cast Iron Ultra-Rib/ Twinwall		Clay	108-125	PP/PVC/PE GRP Fib. Cement Ductile Iron Cast Iron Ultra-Rib/ Twinwall		Clay	123-150	PP/PVC/PE GRP Fib. Cement Ductile Iron Cast Iron Ultra-Rib/ Twinwall		Clay	158-176
PP/PVC/PE GRP Fib. Cement Ductile Iron Cast Iron Ultra-Rib/ Twinwall	PP/PVC/PE GRP Fib. Cement Ductile Iron Cast Iron Ultra-Rib/ Twinwall		108-125	PP/PVC/PE GRP Fib. Cement Ductile Iron Cast Iron Ultra-Rib/ Twinwall	PP/PVC/PE GRP Fib. Cement Ductile Iron Cast Iron Ultra-Rib/ Twinwall		123-150	PP/PVC/PE GRP Fib. Cement Ductile Iron Cast Iron Ultra-Rib/ Twinwall	PP/PVC/PE GRP Fib. Cement Ductile Iron Cast Iron Ultra-Rib/ Twinwall		158-176
DN 200		GENIUS-OPTION Size Range (mm)		DN 250		GENIUS-OPTION Size Range (mm)		DN 300		GENIUS-OPTION Size Range (mm)	
Clay N+H	-	Clay N+H	231-265	Clay N+H	-	Clay N+H	285-326	Clay N+H	-	Clay N+H	342-385
PP/PVC/PE GRP Fib. Cement Ductile Iron Cast Iron Ultra-Rib/ Twinwall		Clay	198-231	PP/PVC/PE GRP Fib. Cement Ductile Iron Cast Iron Ultra-Rib/ Twinwall		Clay	248-285	PP/PVC/PE GRP Fib. Cement Ductile Iron Cast Iron Ultra-Rib/ Twinwall		Clay	313-342
PP/PVC/PE GRP Fib. Cement Ductile Iron Cast Iron Ultra-Rib/ Twinwall	PP/PVC/PE GRP Fib. Cement Ductile Iron Cast Iron Ultra-Rib/ Twinwall		198-231	PP/PVC/PE GRP Fib. Cement Ductile Iron Cast Iron Ultra-Rib/ Twinwall	PP/PVC/PE GRP Fib. Cement Ductile Iron Cast Iron Ultra-Rib/ Twinwall		248-285	PP/PVC/PE GRP Fib. Cement Ductile Iron Cast Iron Ultra-Rib/ Twinwall	PP/PVC/PE GRP Fib. Cement Ductile Iron Cast Iron Ultra-Rib/ Twinwall		313-342



Coupling

CANADA PLUS TYPE 2A

- + Coupling for clay pipes
- + For above and below ground
- + For plain ended pipes within the same dimension
- + Resistant to 0.6 bar

Coupling Canada Plus Type 2A – for connecting clay pipes within same dimension

The coupling Canada Plus Type 2A connects plain ended clay pipes within same dimension and is compensating differences in outside diameters of max. 6 mm.

The coupling Canada Plus Type 2A can be used for applications above and below ground as well as inside and outside of buildings.

INSTALLATION



Position plain ended pipes.

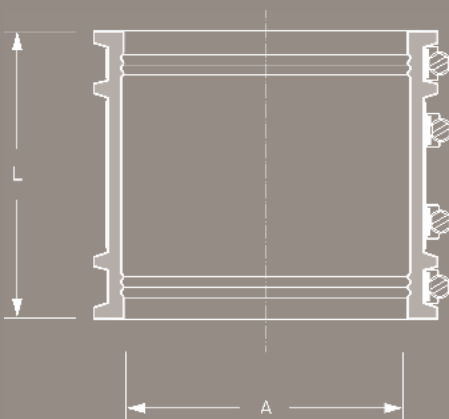


Slide coupling over one plain end.



Center coupling over joint. Tighten clamps and shear band reciprocally.

DESCRIPTION



TECHNICAL SPECIFICATION

Coupling Canada Plus Type 2A for connecting clay pipes within same dimension for applications above and below ground as well as inside and outside of buildings.

Clay Pipe DN/Strength _____

Article Number _____
 Qty Price/Unit Total

Manufacturer: MÜCHER DICHTUNGEN®, D-50226 Frechen, T +49 2234 928 03-0, F-55
 Pressure Tightness: 0.6 bar water
 Jetting Resistance: 120 bar
 Corrosion Resistance: TOX-Technology
 Sealing Material: EPDM rubber with lock in place profile according to DIN EN 681-1
 Stainless Steel: AISI 304/1.4301 according to DIN EN 10088-2
 Temperature Resistance: -40°C to +120°C, temporary max. temperature +160°C
 Standard/Approval: DIN EN 295-4, DIN EN 16397-2, CE15

PRODUCT RANGE 

COUPLING CANADA PLUS, TYPE 2A FOR CLAY PIPES							
Article Number	Reference	Nominal Diameter (DN)	A Size Range (mm)	L Length (mm)	resistant to (bar)	Nm	Weight (kg)
77100135	Canada Plus MC 135	100	120-135	110	0,6	6	0,6
77125165	Canada Plus MC 165	125	150-165	110	0,6	6	0,7
77150190	Canada Plus MC 190	150	175-190	110	0,6	6	0,8
77200250	Canada Plus MC 250	200 N	235-250	110	0,6	6	1,0
77200260	Canada Plus MC 260	200 H	245-260	110	0,6	6	1,0
77250305	Canada Plus MC 305	250 N	290-305	165	0,6	10	1,9
77250325	Canada Plus MC 325	250 H	310-325	165	0,6	10	2,0
77300360	Canada Plus MC 360	300 N	345-360	165	0,6	10	2,2
77300385	Canada Plus MC 385	300 H	370-385	165	0,6	10	2,4
77350425	Canada Plus MC 425	350 N	410-425	165	0,6	13	2,7
77350440	Canada Plus MC 440	350 H	425-440	165	0,6	13	2,7
77400495	Canada Plus MC 495	400 N	475-495	165	0,6	13	3,1
77400505	Canada Plus MC 505	400 H	485-505	165	0,6	13	3,1
77450560	Canada Plus MC 560	450 H	540-560	165	0,6	13	3,2
77500590	Canada Plus MC 590	500 N	570-590	165	0,6	13	3,6
77500620	Canada Plus MC 620	500 H	600-620	165	0,6	13	3,9



Coupling

CANADA PLUS TYPE 2B

- + Coupling for clay pipes
- + For above and below ground
- + Combinable with bushes
- + Resistant to 2.5 bar

Coupling Canada Plus Type 2B – for connecting clay pipes within same or different dimensions

The coupling Canada Plus Type 2B connects plain ended clay pipes within same or different dimensions and is compensating differences in outside diameters of maximum 12 mm. Larger differences will require the use of bushes.

The coupling Canada Plus Type 2B can be used for applications above and below ground as well as inside and outside of buildings.



INSTALLATION



Position plain ended pipes.

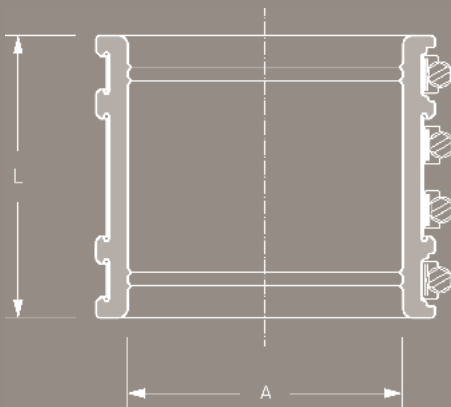


Slide coupling over one plain end.



Center coupling over joint. Tighten clamps and shear band reciprocally.

DESCRIPTION



TECHNICAL SPECIFICATION

Coupling Canada Plus Type 2B for connecting clay pipes within same or different dimensions for applications above and below ground as well as inside and outside of buildings.

Clay Pipe DN/Strength _____

Article Number _____

___ Qty ___ Price/Unit ___ Total

Manufacturer: MÜCHER DICHTUNGEN®, D-50226 Frechen, T +49 2234 928 03-0, F-55

Pressure Tightness: 2.5 bar water / -0.3 bar vacuum

Jetting Resistance: 120 bar

Corrosion Resistance: TOX-Technology

Sealing Material: EPDM or Nitrile (NBR) rubber with lock in place profile according to DIN EN 681-1

Stainless Steel: AISI 304/1.4301, alternatively AISI 316/1.4404 according to DIN EN 10088-2

Temperature Resistance: -40°C to +120°C, temporary max. temperature +160°C

Standard/Approval: DIN EN 16397-2, European Technical Approval ETA-09/0248, CE15



PRODUCT RANGE 

COUPLING CANADA PLUS, TYPE 2B FOR CLAY PIPES							
Article Number	Reference	Nominal Diameter (DN)	A Size Range (mm)	L Length (mm)	resistant to (bar)	Nm	Weight (kg)
73100137	Canada Plus MSC 137	100	120-137	120	2,5	10	0,9
73125162	Canada Plus MSC 162	125	137-162	120	2,5	10	1,1
73150200	Canada Plus MSC 200	150	175-200	150	2,5	10	1,7
73200250	Canada Plus MSC 250	200 N	225-250	150	2,5	10	2,0
73200275	Canada Plus MSC 275	200 H	250-275	150	2,5	10	2,3
73250310	Canada Plus MSC 310	250 N	285-310	190	2,5	13	3,5
73250335	Canada Plus MSC 335	250 H	310-335	190	2,5	13	3,8
73300360	Canada Plus MSC 360	300 N	335-360	190	2,5	13	4,0
73300385	Canada Plus MSC 385	300 H	355-385	190	2,5	13	4,3
73350430	Canada Plus MSC 430	350 N	400-430	190	2,5	13	4,7
73350445	Canada Plus MSC 445	350 H	415-445	190	2,5	13	4,9
73400495	Canada Plus MSC 495	400 N	465-495	190	2,5	13	5,2
73400510	Canada Plus MSC 510	400 H	480-510	190	2,5	13	5,5
73450560	Canada Plus MSC 560	450 H	530-560	190	2,5	13	5,9
73500600	Canada Plus MSC 600	500 N	570-600	190	2,5	13	6,3
73500620	Canada Plus MSC 620	500 H	590-620	190	2,5	13	6,4
73600700	Canada Plus MSC 700	600 N	670-700	190	1,0	20	7,9
73600735	Canada Plus MSC 735	600 H	705-735	190	1,0	20	8,3
73700805	Canada Plus MSC 805	700 N	775-805	190	1,0	20	9,1
73700875	Canada Plus MSC 875	700 H	850-875	190	1,0	20	9,5
73800915	Canada Plus MSC 915	800 N	885-915	190	1,0	20	10,3
73800975	Canada Plus MSC 975	800 H	945-975	190	1,0	20	10,8



Standard Coupling

CANADA PLUS TYPE 2B

- + For all pipe materials
- + For above and below ground
- + For usage with bushes
- + Resistant to 2.5 bar

Standard Coupling Canada Plus Type 2B – for the connection of all pipe systems with different or same outside diameters

The Standard Coupling Canada Plus Type 2B connects all plain ended pipes within same or different dimensions and is compensating differences in outside diameters of max. 12 mm. Larger differences will require the use of bushes.

The Standard Coupling Canada Plus Type 2B can be used for applications above and below ground as well as inside and outside of buildings.



INSTALLATION



Position plain ended pipes.

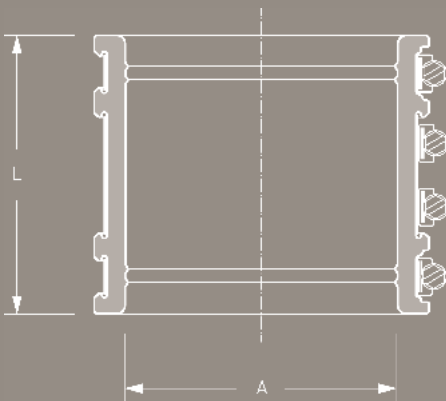


Slide coupling over one plain end.



Center coupling over joint. Tighten clamps and shear band reciprocally.

DESCRIPTION



TECHNICAL SPECIFICATION

Standard Coupling Canada Plus Type 2B for connection of all plain ended pipe materials with different or same outside diameters for applications above and below ground as well as inside and outside of buildings. Differences in outside diameters of more than 12 mm will require the use of bushes.

Pipe 1 DN/Material _____
 Pipe 2 DN/Material _____
 Article Number _____
 ___ Qty ___ Price/Unit ___ Total

Manufacturer: MÜCHER DICHTUNGEN®, D-50226 Frechen, T +49 2234 928 03-0, F-55
 Pressure Tightness: 2.5 bar water / -0.3 bar vacuum
 Jetting Resistance: 120 bar
 Corrosion Resistance: TOX-Technology
 Sealing Material: EPDM or Nitrile (NBR) rubber with lock in place profile according to DIN EN 681-1
 Stainless Steel: AISI 304/1.4301, alternatively AISI 316/1.4404 according to DIN EN 10088-2
 Temperature Resistance: -40°C to +120°C, temporary max. temperature +160°C
 Standard/Approval: DIN EN 16397-2, European Technical Approval ETA-09/0248, CE15

PRODUCT RANGE 

STANDARD COUPLING CANADA PLUS, TYPE 2B FOR ALL PIPE MATERIALS						
Article Number	Reference	A Size Range (mm)	L Length (mm)	resistant to (bar)	Nm	Weight (kg)
79000115	Canada Plus MSC 115	100-115	120	2,5	10	0,8
79000120	Canada Plus MSC 120	105-120	120	2,5	10	0,9
73100137	Canada Plus MSC 137	120-137	120	2,5	10	0,9
79000150	Canada Plus MSC 150	125-150	120	2,5	10	1,0
73125162	Canada Plus MSC 162	137-162	120	2,5	10	1,1
79000175	Canada Plus MSC 175	150-175	120	2,5	10	1,2
79000190	Canada Plus MSC 190	165-190	120	2,5	10	1,6
73150200	Canada Plus MSC 200	175-200	150	2,5	10	1,7
79000212	Canada Plus MSC 212	187-212	150	2,5	10	1,8
79000225	Canada Plus MSC 225	200-225	150	2,5	10	1,9
73200225	Canada Plus MSC 250	225-250	150	2,5	10	2,0
73200275	Canada Plus MSC 275	250-275	150	2,5	10	2,3
79000290	Canada Plus MSC 290	265-290	150	2,5	10	3,4
73250310	Canada Plus MSC 310	285-310	190	2,5	13	3,5
79000320	Canada Plus MSC 320	290-320	190	2,5	13	3,7
73250335	Canada Plus MSC 335	310-335	190	2,5	13	3,8
79000350	Canada Plus MSC 350	325-350	190	2,5	13	3,9
73300360	Canada Plus MSC 360	335-360	190	2,5	13	4,0
73300385	Canada Plus MSC 385	355-385	190	2,5	13	4,3
79000410	Canada Plus MSC 410	385-410	190	2,5	13	4,5
73350430	Canada Plus MSC 430	400-430	190	2,5	13	4,7
73350445	Canada Plus MSC 445	415-445	190	2,5	13	4,9
79000465	Canada Plus MSC 465	435-465	190	2,5	13	5,1
73400495	Canada Plus MSC 495	465-495	190	2,5	13	5,2
73400510	Canada Plus MSC 510	480-510	190	2,5	13	5,4
79000525	Canada Plus MSC 525	495-525	190	2,5	13	5,5
79000545	Canada Plus MSC 545	515-545	190	2,5	13	5,7
73450560	Canada Plus MSC 560	530-560	190	2,5	13	5,9
79000570	Canada Plus MSC 570	540-570	190	2,5	13	6,1
73500600	Canada Plus MSC 600	570-600	190	2,5	13	6,3
73500620	Canada Plus MSC 620	590-620	190	2,5	13	6,4
79000635	Canada Plus MSC 635	620-635	190	1,0	20	7,2
79000650	Canada Plus MSC 650	635-650	190	1,0	20	7,4
79000665	Canada Plus MSC 665	650-665	190	1,0	20	7,5
79000680	Canada Plus MSC 680	665-680	190	1,0	20	7,7
79000695	Canada Plus MSC 695	680-695	190	1,0	20	7,8
73600700	Canada Plus MSC 700	670-700	190	1,0	20	7,9
79000710	Canada Plus MSC 710	695-710	190	1,0	20	8,0
79000725	Canada Plus MSC 725	710-725	190	1,0	20	8,2
73600735	Canada Plus MSC 735	705-735	190	1,0	20	8,3
79000740	Canada Plus MSC 740	725-740	190	1,0	20	8,3
79000755	Canada Plus MSC 755	740-755	190	1,0	20	8,5
79000770	Canada Plus MSC 770	755-770	190	1,0	20	8,7
79000785	Canada Plus MSC 785	770-785	190	1,0	20	8,8
79000800	Canada Plus MSC 800	785-800	190	1,0	20	9,0
73700805	Canada Plus MSC 805	775-805	190	1,0	20	9,1
79000815	Canada Plus MSC 815	800-815	190	1,0	20	9,2
79000830	Canada Plus MSC 830	815-830	190	1,0	20	9,3
79000845	Canada Plus MSC 845	830-845	190	1,0	20	9,5
73700875	Canada Plus MSC 875	860-875	190	1,0	20	9,8
79000890	Canada Plus MSC 890	875-890	190	1,0	20	10,0
79000905	Canada Plus MSC 905	890-905	190	1,0	20	10,1
73800915	Canada Plus MSC 915	885-915	190	1,0	20	10,3
79000920	Canada Plus MSC 920	905-920	190	1,0	20	10,3
79000935	Canada Plus MSC 935	920-935	190	1,0	20	10,5
79000950	Canada Plus MSC 950	935-950	190	1,0	20	10,6
79000965	Canada Plus MSC 965	950-965	190	1,0	20	10,8

PRODUCT RANGE 
STANDARD COUPLING CANADA PLUS, TYPE 2B FOR ALL PIPE MATERIALS

Article Number	Reference	A Size Range (mm)	L Length (mm)	resistant to (bar)	Nm	Weight (kg)
73800975	Canada Plus MSC 975	945-975	190	1,0	20	10,8
79000980	Canada Plus MSC 980	965-980	190	1,0	20	11,0
79000995	Canada Plus MSC 995	980-995	190	1,0	20	11,1
79001010	Canada Plus MSC 1010	995-1010	190	0,6	20	11,3
79001025	Canada Plus MSC 1025	1010-1025	190	0,6	20	11,5
79001040	Canada Plus MSC 1040	1025-1040	190	0,6	20	11,6
79001055	Canada Plus MSC 1055	1040-1055	190	0,6	20	11,8
79001070	Canada Plus MSC 1070	1055-1070	190	0,6	20	12,0
79001085	Canada Plus MSC 1085	1070-1085	190	0,6	20	12,1
79001100	Canada Plus MSC 1100	1085-1100	190	0,6	20	12,3
79001115	Canada Plus MSC 1115	1100-1115	190	0,6	20	12,5
79001130	Canada Plus MSC 1130	1115-1130	190	0,6	20	12,6
79001145	Canada Plus MSC 1145	1130-1145	190	0,6	20	12,8
79001160	Canada Plus MSC 1160	1145-1160	190	0,6	20	12,9
79001175	Canada Plus MSC 1175	1160-1175	190	0,6	20	13,1
79001190	Canada Plus MSC 1190	1175-1190	190	0,6	20	13,3
79001205	Canada Plus MSC 1205	1190-1205	190	0,6	25	13,4
79001220	Canada Plus MSC 1220	1205-1220	190	0,6	25	13,6
79001235	Canada Plus MSC 1235	1220-1235	190	0,6	25	13,8
79001250	Canada Plus MSC 1250	1235-1250	190	0,6	25	13,9
79001265	Canada Plus MSC 1265	1250-1265	190	0,6	25	14,1
79001280	Canada Plus MSC 1280	1265-1280	190	0,6	25	14,3
79001295	Canada Plus MSC 1295	1280-1295	190	0,6	25	14,4
79001310	Canada Plus MSC 1310	1295-1310	190	0,6	25	14,6
79001325	Canada Plus MSC 1325	1310-1325	190	0,6	25	14,8
79001340	Canada Plus MSC 1340	1325-1340	190	0,6	25	14,9
79001355	Canada Plus MSC 1355	1340-1355	190	0,6	25	15,1
79001370	Canada Plus MSC 1370	1355-1370	190	0,6	25	15,3
79001385	Canada Plus MSC 1385	1370-1385	190	0,6	25	15,4
79001400	Canada Plus MSC 1400	1385-1400	190	0,6	25	15,6
79001415	Canada Plus MSC 1415	1400-1415	190	-	25	15,8
79001430	Canada Plus MSC 1430	1415-1430	190	-	25	15,9
79001445	Canada Plus MSC 1445	1430-1445	190	-	25	16,1
79001460	Canada Plus MSC 1460	1445-1460	190	-	25	16,2
79001475	Canada Plus MSC 1475	1460-1475	190	-	25	16,4
79001490	Canada Plus MSC 1490	1475-1490	190	-	25	16,6
79001505	Canada Plus MSC 1505	1490-1505	190	-	25	16,7
79001520	Canada Plus MSC 1520	1505-1520	190	-	25	16,9
79001535	Canada Plus MSC 1535	1520-1535	190	-	25	17,1
79001550	Canada Plus MSC 1550	1535-1550	190	-	25	17,2
79001565	Canada Plus MSC 1565	1550-1565	190	-	25	17,4
79001580	Canada Plus MSC 1580	1565-1580	190	-	25	17,6
79001595	Canada Plus MSC 1595	1580-1595	190	-	25	17,7
79001610	Canada Plus MSC 1610	1595-1610	190	-	25	17,9
79001625	Canada Plus MSC 1625	1610-1625	190	-	25	18,1
79001640	Canada Plus MSC 1640	1625-1640	190	-	25	18,2
79001655	Canada Plus MSC 1655	1640-1655	190	-	25	18,4
79001670	Canada Plus MSC 1670	1655-1670	190	-	25	18,6
79001685	Canada Plus MSC 1685	1670-1685	190	-	25	18,7
79001700	Canada Plus MSC 1700	1685-1700	190	-	25	18,9
79001715	Canada Plus MSC 1715	1700-1715	190	-	25	19,0
79001730	Canada Plus MSC 1730	1715-1730	190	-	25	19,2
79001745	Canada Plus MSC 1745	1730-1745	190	-	25	19,4
79001760	Canada Plus MSC 1760	1745-1760	190	-	25	19,5
79001775	Canada Plus MSC 1775	1760-1775	190	-	25	19,7
79001790	Canada Plus MSC 1790	1775-1790	190	-	25	19,9
79001805	Canada Plus MSC 1805	1790-1805	190	-	25	20,1

Larger sizes are available on request.



Standard Coupling

BUSH



- + For compensating different outside diameters
- + In combination with Standard Coupling
- + Extra tightness through pretension
- + Resistant to 2.5 bar

Bush – in combination with Standard Coupling – for compensating larger outside diameter differences

Bushes are required to be used in combination with Standard Couplings when there is an outside diameter difference of more than 12 mm.

By combining multiple bushes made from different thicknesses (5, 9, 14, 24 mm) almost any connection can be achieved ensuring a tight fit.

Bushes are manufactured with pretension and tighten against each other. This effect is supported through the tothing of the rubber profile.



INSTALLATION



Slide coupling completely over larger plain end.

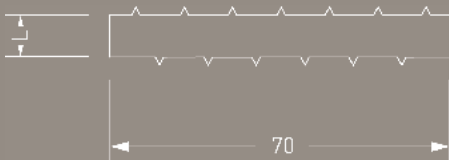


Slide bush over smaller plain end and position bush properly.



Center coupling over joint. Tighten clamps and shear band reciprocally.

DESCRIPTION



TECHNICAL SPECIFICATION

Bushes with pretension for compensating larger outside diameter differences. Outside diameter differences need to be taken on site.

Pipe 1 DN/Material

Pipe 2 DN/Material

Article Number

Qty Price/Unit Total

Manufacturer: MÜCHER DICHTUNGEN®, D-50226 Frechen, T +49 2234 928 03-0, F-55

Pressure Tightness: 2.5 bar water / -0.3 bar vacuum

Jetting Resistance: 120 bar

Corrosion Resistance: TOX-Technology

Sealing Material: EPDM or Nitrile (NBR) rubber with lock in place profile according to DIN EN 681-1

Temperature Resistance: -40°C to +120°C, temporary max. temperature +160°C

Standard/Approval: DIN EN 16397-2, European Technical Approval ETA-09/0248, CE15



Coupling

BML-CONNECTOR

- + For bridge drainage
- + Reinforced clamps
- + AISI 316 stainless steel
- + Ozone resistant EPDM rubber

BML-Connector - for connecting bridge drainage pipes within same dimension

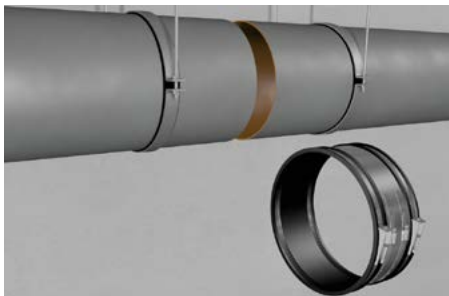
The BML-Connector is fitted with reinforced clamps. Linear expansion through temperature variation and vibrations of the bridge can be compensated.

An angular deflection of up to 3% allows installations for curved bridges, too. The ozone resistant EPDM rubber guarantees a durable tightening.

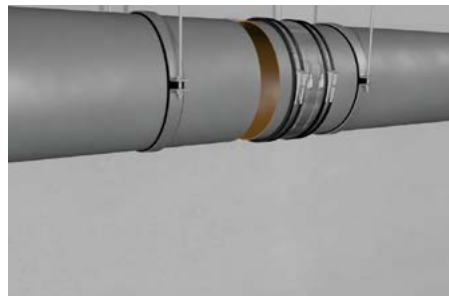
The BML-Connector can also be supplied in nitrile (NBR) rubber to offer resistance against oil and petrol. The used materials are resistant against road salt and exhaust fumes.



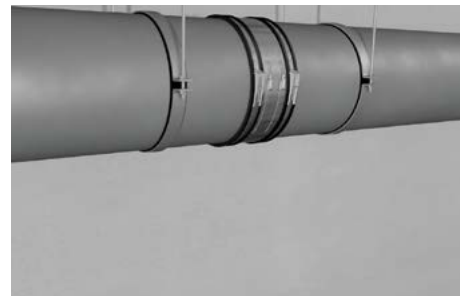
INSTALLATION



Position plain ended pipes.

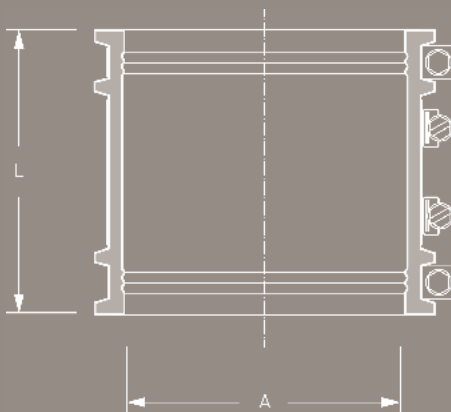


Slide coupling over one plain end.



Center coupling over joint. Tighten clamps and shear band reciprocally.

DESCRIPTION



TECHNICAL SPECIFICATION

BML-Connector for connecting bridge drainage pipes made from cast iron, GRP or stainless steel.

Pipe DN/Material _____

Article Number _____

___ Qty ___ Price/Unit ___ Total

Manufacturer: MÜCHER DICHTUNGEN®, D-50226 Frechen, T +49 2234 928 03-0, F-55

Pressure Tightness: 2.5 bar water / -0.3 bar vacuum

Jetting Resistance: 120 bar

Corrosion Resistance: TOX-Technology

Sealing Material: EPDM or Nitrile (NBR) rubber with lock in place profile according to DIN EN 681-1

Stainless Steel: AISI 304/1.4301, alternatively AISI 316/1.4404 according to DIN EN 10088-2

Temperature Resistance: -40°C to +120°C, temporary max. temperature +160°C

Standard/Approval: DIN EN 16397-2, European Technical Approval ETA-09/0248, CE15



PRODUCT RANGE 

BML-CONNECTOR, FOR BRIDGE DRAINAGE						
Article Number	Reference	A Size Range (mm)	L Length (mm)	resistant to (bar)	Nm	Weight (kg)
81000400	BML-Connector DN 400	400-430	190	2,5	20	6,1
81000500	BML-Connector DN 500	515-545	190	2,5	20	7,4
81000600	BML-Connector DN 600	620-645	190	2,5	20	8,8

Larger sizes are available on request.



Extra Wide Coupling

CANADA TITAN XL

- + For all pipe materials
- + For above and below ground
- + Extra wide profile
- + Resistant to 2.5 bar

Extra Wide Coupling Canada TITAN XL - for safe connecting of large diameter pipes

The Extra Wide Coupling Canada TITAN XL connects all plain ended pipes within same or different dimensions and is compensating differences in outside diameters of max. 12 mm. Larger differences will require the use of bushes.

The extra wide profile allows a safe and flexible laying of large diameter pipes from DN 800.



INSTALLATION



Position plain ended pipes.

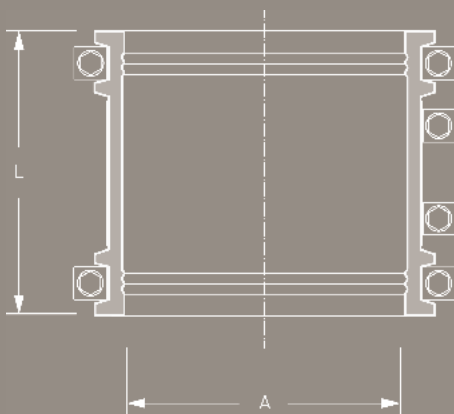


Slide coupling over one plain end.



Center coupling over joint. Tighten clamps and shear band reciprocally.

DESCRIPTION



TECHNICAL SPECIFICATION

Extra Wide Coupling Canada TITAN XL for connecting all plain ended pipe materials with different or same outside diameters for applications above and below ground. Differences in outside diameters of more than 12 mm will require the use of bushes.

Pipe 1 DN/Material _____
 Pipe 2 DN/Material _____
 Article Number _____
 _____ Qty _____ Price/Unit _____ Total

Manufacturer: MÜCHER DICHTUNGEN®, D-50226 Frechen, T +49 2234 928 03-0, F-55
 Pressure Tightness: 2.5 bar water / -0.3 bar vacuum
 Jetting Resistance: 120 bar
 Corrosion Resistance: TOX-Technology
 Sealing Material: EPDM or Nitrile (NBR) rubber with lock in place profile according to DIN EN 681-1
 Stainless Steel: AISI 304/1.4301, alternatively AISI 316/1.4404 according to DIN EN 10088-2
 Temperature Resistance: -40°C to +120°C, temporary max. temperature +160°C
 Standard/Approval: DIN EN 16397-2, CE15



PRODUCT RANGE

EXTRA WIDE COUPLING CANADA TITAN XL						
Article Number	Reference	A Size Range (mm)	L Length (mm)	resistant to (bar)	Nm	Weight (kg)
80000310	Canada Titan MXL 310	285-310	300	2,5	13	5,6
80000320	Canada Titan MXL 320	290-320	300	2,5	13	5,8
80000335	Canada Titan MXL 335	310-335	300	2,5	13	6,0
80000350	Canada Titan MXL 350	325-350	300	2,5	13	6,3
80000360	Canada Titan MXL 360	335-360	300	2,5	13	6,5
80000385	Canada Titan MXL 385	355-385	300	2,5	13	7,0
80000410	Canada Titan MXL 410	385-410	300	2,5	13	7,4
80000430	Canada Titan MXL 430	400-430	300	2,5	13	7,8
80000445	Canada Titan MXL 445	415-445	300	2,5	13	8,1
80000465	Canada Titan MXL 465	435-465	300	2,5	13	8,6
80000495	Canada Titan MXL 495	465-495	300	2,5	13	9,0
80000510	Canada Titan MXL 510	480-510	300	2,5	13	9,3
80000525	Canada Titan MXL 525	495-525	300	2,5	13	9,8
80000545	Canada Titan MXL 545	515-545	300	2,5	13	10,2
80000560	Canada Titan MXL 560	530-560	300	2,5	13	10,7
80000570	Canada Titan MXL 570	540-570	300	2,5	13	11,1
80000600	Canada Titan MXL 600	570-600	300	2,5	13	11,5
80000620	Canada Titan MXL 620	590-620	300	2,5	13	11,9
80000635	Canada Titan MXL 635	620-635	300	1,0	20	12,3
80000650	Canada Titan MXL 650	635-650	300	1,0	20	12,6
80000665	Canada Titan MXL 665	650-665	300	1,0	20	13,0
80000680	Canada Titan MXL 680	665-680	300	1,0	20	13,4
80000695	Canada Titan MXL 695	680-695	300	1,0	20	13,8
80000700	Canada Titan MXL 700	670-700	300	1,0	20	13,9
80000710	Canada Titan MXL 710	695-710	300	1,0	20	14,1
80000725	Canada Titan MXL 725	710-725	300	1,0	20	14,5
80000735	Canada Titan MXL 735	705-735	300	1,0	20	14,9
80000740	Canada Titan MXL 740	725-740	300	1,0	20	14,3
80000755	Canada Titan MXL 755	740-755	300	1,0	20	14,7
80000770	Canada Titan MXL 770	755-770	300	1,0	20	15,0
80000785	Canada Titan MXL 785	770-785	300	1,0	20	15,3
80000800	Canada Titan MXL 800	785-800	300	1,0	20	15,7
80000805	Canada Titan MXL 805	775-805	300	1,0	20	16,1
80000815	Canada Titan MXL 815	800-815	300	1,0	20	16,4
80000830	Canada Titan MXL 830	815-830	300	1,0	20	16,8
80000845	Canada Titan MXL 845	830-845	300	1,0	20	17,1
80000860	Canada Titan MXL 860	845-860	300	1,0	20	17,5
80000875	Canada Titan MXL 875	850-875	300	1,0	20	17,8
80000890	Canada Titan MXL 890	875-890	300	1,0	20	18,1
80000905	Canada Titan MXL 905	890-905	300	1,0	20	18,5
80000915	Canada Titan MXL 915	885-915	300	1,0	20	18,8
80000920	Canada Titan MXL 920	905-920	300	1,0	20	19,1
80000935	Canada Titan MXL 935	920-935	300	1,0	20	19,5
80000950	Canada Titan MXL 950	935-950	300	1,0	20	19,8
80000965	Canada Titan MXL 965	950-965	300	1,0	20	20,2
80000975	Canada Titan MXL 975	945-975	300	1,0	20	20,5
80000980	Canada Titan MXL 980	965-980	300	1,0	20	20,9
80000995	Canada Titan MXL 995	980-995	300	1,0	20	21,3
80001010	Canada Titan MXL 1010	995-1010	300	0,6	20	21,7
80001025	Canada Titan MXL 1025	1010-1025	300	0,6	20	22,1
80001040	Canada Titan MXL 1040	1025-1040	300	0,6	20	22,5
80001055	Canada Titan MXL 1055	1040-1055	300	0,6	20	22,8
80001070	Canada Titan MXL 1070	1055-1070	300	0,6	20	23,1
80001085	Canada Titan MXL 1085	1070-1085	300	0,6	20	23,4
80001100	Canada Titan MXL 1100	1085-1100	300	0,6	20	23,8
80001115	Canada Titan MXL 1115	1100-1115	300	0,6	20	24,1
80001130	Canada Titan MXL 1130	1115-1130	300	0,6	20	24,5

PRODUCT RANGE

EXTRA WIDE COUPLING CANADA TITAN XL						
Article Number	Reference	A Size Range (mm)	L Length (mm)	resistant to (bar)	Nm	Weight (kg)
80001145	Canada Titan MXL 1145	1130-1145	300	0,6	20	24,8
80001160	Canada Titan MXL 1160	1145-1160	300	0,6	20	25,1
80001175	Canada Titan MXL 1175	1160-1175	300	0,6	20	25,4
80001190	Canada Titan MXL 1190	1175-1190	300	0,6	20	25,7
80001205	Canada Titan MXL 1205	1190-1205	300	0,6	25	26,0
80001220	Canada Titan MXL 1220	1205-1220	300	0,6	25	26,4
80001235	Canada Titan MXL 1235	1220-1235	300	0,6	25	26,8
80001250	Canada Titan MXL 1250	1235-1250	300	0,6	25	27,1
80001265	Canada Titan MXL 1265	1250-1265	300	0,6	25	27,5
80001280	Canada Titan MXL 1280	1265-1280	300	0,6	25	27,8
80001295	Canada Titan MXL 1295	1280-1295	300	0,6	25	28,1
80001310	Canada Titan MXL 1310	1295-1310	300	0,6	25	28,4
80001325	Canada Titan MXL 1325	1310-1325	300	0,6	25	28,7
80001340	Canada Titan MXL 1340	1325-1340	300	0,6	25	29,2
80001355	Canada Titan MXL 1355	1340-1355	300	0,6	25	29,6
80001370	Canada Titan MXL 1370	1355-1370	300	0,6	25	30,0
80001385	Canada Titan MXL 1385	1370-1385	300	0,6	25	30,4
80001400	Canada Titan MXL 1400	1385-1400	300	0,6	25	30,8
80001415	Canada Titan MXL 1415	1400-1415	300	-	30	31,2
80001430	Canada Titan MXL 1430	1415-1430	300	-	30	31,6
80001445	Canada Titan MXL 1445	1430-1445	300	-	30	32,0
80001460	Canada Titan MXL 1460	1445-1460	300	-	30	32,4
80001475	Canada Titan MXL 1475	1460-1475	300	-	30	32,8
80001490	Canada Titan MXL 1490	1475-1490	300	-	30	33,2
80001505	Canada Titan MXL 1505	1490-1505	300	-	30	33,6
80001520	Canada Titan MXL 1520	1505-1520	300	-	30	34,0
80001535	Canada Titan MXL 1535	1520-1535	300	-	30	34,4
80001550	Canada Titan MXL 1550	1535-1550	300	-	30	34,8
80001565	Canada Titan MXL 1565	1550-1565	300	-	30	35,2
80001580	Canada Titan MXL 1580	1565-1580	300	-	30	35,6
80001595	Canada Titan MXL 1595	1580-1595	300	-	30	36,0
80001610	Canada Titan MXL 1610	1595-1610	300	-	30	36,4
80001625	Canada Titan MXL 1625	1610-1625	300	-	30	36,8
80001640	Canada Titan MXL 1640	1625-1640	300	-	30	37,2
80001655	Canada Titan MXL 1655	1640-1655	300	-	30	37,6
80001670	Canada Titan MXL 1670	1655-1670	300	-	30	38,0
80001685	Canada Titan MXL 1685	1670-1685	300	-	30	38,4
80001700	Canada Titan MXL 1700	1685-1700	300	-	30	38,8
80001715	Canada Titan MXL 1715	1700-1715	300	-	30	39,2
80001730	Canada Titan MXL 1730	1715-1730	300	-	30	39,6
80001745	Canada Titan MXL 1745	1730-1745	300	-	30	40,0
80001760	Canada Titan MXL 1760	1745-1760	300	-	30	40,4
80001775	Canada Titan MXL 1775	1760-1775	300	-	30	40,8
80001790	Canada Titan MXL 1790	1775-1790	300	-	30	41,2
80001805	Canada Titan MXL 1805	1790-1805	300	-	30	41,6
80001820	Canada Titan MXL 1820	1805-1820	300	-	30	42,0
80001835	Canada Titan MXL 1835	1820-1835	300	-	30	42,4
80001850	Canada Titan MXL 1850	1835-1850	300	-	30	42,8
80001865	Canada Titan MXL 1865	1850-1865	300	-	30	43,2
80001880	Canada Titan MXL 1880	1865-1880	300	-	30	43,6
80001895	Canada Titan MXL 1895	1880-1895	300	-	30	44,0
80011910	Canada Titan MXL 1910	1895-1910	300	-	30	44,4
80001925	Canada Titan MXL 1925	1910-1925	300	-	30	44,8
80001940	Canada Titan MXL 1940	1925-1940	300	-	30	45,2
80001955	Canada Titan MXL 1955	1940-1955	300	-	30	45,6
80001970	Canada Titan MXL 1970	1955-1970	300	-	30	46,0
80001985	Canada Titan MXL 1985	1970-1985	300	-	30	46,4

Larger sizes are available on request.





Coupling Kit

EASY-REP

- + For repair of damage or cracks
- + No stop of water flow
- + For above and below ground
- + Resistant to 0.5 bar

Coupling Kit EASY-REP - allows local repairs without stopping the water flow

EASY-REP is a rubber flexible repair coupling supplied in an easy to install kit form.

EASY-REP is designed to allow pipe repairs to be carried out to sewerage and drainage pipelines which have been subject to local damage or cracks, without the need to replace the section of pipe or even to stop the flow of water whilst carrying out the repair.

INSTALLATION



Coat rubber glue to the sleeve.

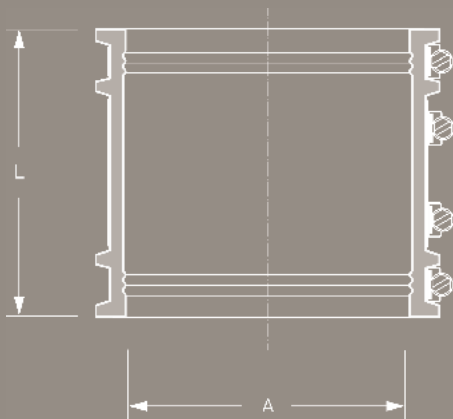


Tighten shear band reciprocally.



Tighten clamps.

DESCRIPTION



TECHNICAL SPECIFICATION

Coupling Kit EASY-REP for local repairs of damaged or cracked waste water pipes made from all materials. The outside diameter on the damaged pipe section needs to be taken on site.

Pipe DN/Material _____

Article Number _____

___ Qty ___ Price/Unit ___ Total

Manufacturer: MÜCHER DICHTUNGEN®, D-50226 Frechen, T +49 2234 928 03-0, F-55

Pressure Tightness: 0.5 bar water

Corrosion Resistance: TOX-Technology

Sealing Material: EPDM rubber with lock in place profile according to DIN EN 681-1

Stainless Steel: AISI 304/1.4301, alternatively AISI 316/1.4404 according to DIN EN 10088-2

Temperature Resistance: -40°C to +120°C, temporary max. temperature +160°C

Standard/Approval: DIN EN 681-1, CE06, MPA Test Certificate No. 22 0008278



PRODUCT RANGE 

COUPLING KIT EASY-REP						
Article Number	Reference	A Size Range (mm)	L Length (mm)	resistant to (bar)	Nm	Weight (kg)
83000310	EASY-REP MER 310	295-310	190	0,5	13	3,5
83000320	EASY-REP MER 320	305-320	190	0,5	13	3,7
83000330	EASY-REP MER 330	315-330	190	0,5	13	3,7
83000340	EASY-REP MER 340	325-340	190	0,5	13	3,9
83000350	EASY-REP MER 350	335-350	190	0,5	13	3,9
83000360	EASY-REP MER 360	345-360	190	0,5	13	4,0
83000370	EASY-REP MER 370	355-370	190	0,5	13	4,1
83000380	EASY-REP MER 380	365-380	190	0,5	13	4,2
83000390	EASY-REP MER 390	375-390	190	0,5	13	4,3
83000400	EASY-REP MER 400	385-400	190	0,5	13	4,4
83000410	EASY-REP MER 410	395-410	190	0,5	13	4,5
83000420	EASY-REP MER 420	405-420	190	0,5	13	4,6
83000430	EASY-REP MER 430	415-430	190	0,5	13	4,7
83000440	EASY-REP MER 440	425-440	190	0,5	13	4,8
83000450	EASY-REP MER 450	435-450	190	0,5	13	5,0
83000460	EASY-REP MER 460	445-460	190	0,5	13	5,0
83000470	EASY-REP MER 470	455-470	190	0,5	13	5,1
83000480	EASY-REP MER 480	465-480	190	0,5	13	5,1
83000490	EASY-REP MER 490	475-490	190	0,5	13	5,2
83000500	EASY-REP MER 500	485-500	190	0,5	13	5,3
83000510	EASY-REP MER 510	495-510	190	0,5	13	5,4
83000520	EASY-REP MER 520	505-520	190	0,5	13	5,5
83000530	EASY-REP MER 530	515-530	190	0,5	13	5,6
83000540	EASY-REP MER 540	525-540	190	0,5	13	5,7
83000550	EASY-REP MER 550	535-550	190	0,5	13	5,8
83000560	EASY-REP MER 560	545-560	190	0,5	13	5,9
83000570	EASY-REP MER 570	555-570	190	0,5	13	6,0
83000580	EASY-REP MER 580	565-580	190	0,5	13	6,1
83000590	EASY-REP MER 590	575-590	190	0,5	13	6,2
83000600	EASY-REP MER 600	585-600	190	0,5	13	6,3
83000610	EASY-REP MER 610	595-610	190	0,5	13	6,4
83000620	EASY-REP MER 620	605-620	190	0,5	13	6,5
83000630	EASY-REP MER 630	615-630	190	0,5	20	6,8
83000640	EASY-REP MER 640	625-640	190	0,5	20	7,2
83000650	EASY-REP MER 650	635-650	190	0,5	20	7,4
83000660	EASY-REP MER 660	645-660	190	0,5	20	7,5
83000670	EASY-REP MER 670	655-670	190	0,5	20	7,6
83000680	EASY-REP MER 680	665-680	190	0,5	20	7,7

Larger sizes are available on request.





Adaptor Coupling

MAC

- + Adaptor for different outside diameters
- + For above and below ground
- + Reliable and durable solution
- + Resistant to 0.6 bar

Adaptor Coupling MAC - for the connection of all pipe systems with different outside diameters

The Adaptor Coupling MAC joints all plain ended pipes with different outside diameters and materials.

The Adaptor Coupling MAC can be used for applications above and below ground as well as inside and outside of buildings.

When changing nominal diameters, the flow direction needs consideration.



INSTALLATION



Position plain ended pipes.

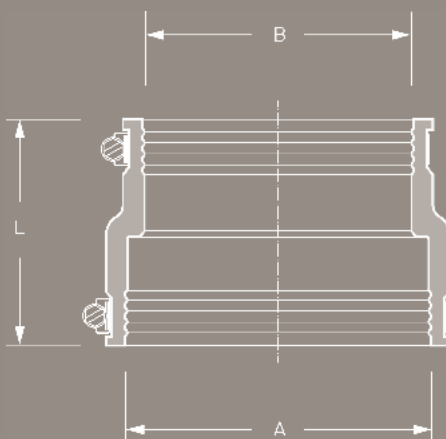


Slide adaptor coupling over one plain end.



Push other plain ended pipe into adaptor coupling and tighten clamps.

DESCRIPTION



TECHNICAL SPECIFICATION

Adaptor Coupling MAC for the connection of all plain ended pipe systems with different outside diameters for applications above and below ground as well as inside and outside of buildings.

Pipe 1 DN/Material _____
 Pipe 2 DN/Material _____

Article Number _____
 ___ Qty ___ Price/Unit ___ Total

Manufacturer: MÜCHER DICHTUNGEN®, D-50226 Frechen, T +49 2234 928 03-0, F-55
 Pressure Tightness: 0.6 bar water / -0.3 bar vacuum
 Jetting Resistance: 120 bar
 Sealing Material: EPDM rubber with lock in place profile according to DIN EN 681-1
 Stainless Steel: AISI 304/1.4301, alternatively AISI 316/1.4404 according to DIN EN 10088-2
 Temperature Resistance: -40°C to +120°C, temporary max. temperature +160°C
 Standard/Approval: DIN EN 16397-2, European Technical Approval ETA-09/0248, CE15

PRODUCT RANGE 

ADAPTOR COUPLING MAC							
Article Number	Reference	A Size Range (mm)	B Size Range (mm)	L Length (mm)	resistant to (bar)	Nm	Weight (kg)
76001251	MAC 1251	110 - 125	80 - 95	120	0,6	6	0,6
76001252	MAC 1252	110 - 125	100 - 115	120	0,6	6	0,6
76001360	MAC 1360	121 - 136	75 - 89	100	0,6	6	0,6
76001361	MAC 1361	121 - 136	80 - 95	120	0,6	6	0,7
76001362	MAC 1362	121 - 136	100 - 115	120	0,6	6	0,6
76001363	MAC 1363	121 - 136	110 - 125	120	0,6	6	0,6
76001451	MAC 1451	130 - 145	95 - 110	100	0,6	6	0,5
76001452	MAC 1452	130 - 145	110 - 125	120	0,6	6	0,7
76001501	MAC 1501	135 - 150	100 - 115	100	0,6	6	0,5
76001602	MAC 1602	144 - 160	110 - 125	120	0,6	6	0,8
76001603	MAC 1603	144 - 160	121 - 136	120	0,6	6	0,8
76001701	MAC 1701	155 - 170	100 - 115	150	0,6	6	1,0
76001702	MAC 1702	155 - 170	110 - 125	120	0,6	6	0,8
76001703	MAC 1703	155 - 170	130 - 145	120	0,6	6	0,8
76001801	MAC 1801	160 - 180	100 - 115	150	0,6	6	1,0
76001802	MAC 1802	160 - 180	110 - 125	150	0,6	6	1,1
76001805	MAC 1805	160 - 180	155 - 170	150	0,6	6	1,3
76001922	MAC 1922	170 - 192	110 - 125	120	0,6	6	0,9
76001923	MAC 1923	170 - 192	121 - 136	120	0,6	6	0,9
76001924	MAC 1924	170 - 192	144 - 160	120	0,6	6	0,9
76001991	MAC 1991	180 - 200	100 - 115	150	0,6	6	1,2
76001993	MAC 1993	180 - 200	121 - 136	150	0,6	6	1,2
76002000	MAC 2000	180 - 200	130 - 145	150	0,6	6	1,4
76002001	MAC 2001	180 - 200	155 - 170	150	0,6	6	1,3
76002002	MAC 2002	180 - 200	160 - 180	150	0,6	6	1,3
76002102	MAC 2102	185 - 210	110 - 125	150	0,6	6	1,3
76002104	MAC 2104	185 - 210	130 - 145	150	0,6	6	1,3
76002105	MAC 2105	185 - 210	144 - 160	150	0,6	6	1,2
76002152	MAC 2152 offset	200 - 215	100 - 115	150	0,6	6	1,0
76002203	MAC 2203	195 - 220	155 - 170	150	0,6	6	1,2
76002303	MAC 2303	205 - 230	130 - 145	165	0,6	6	1,8
76002352	MAC 2352	210 - 235	110 - 125	150	0,6	6	1,5
76002353	MAC 2353	210 - 235	121 - 136	150	0,6	6	1,5
76002354	MAC 2354	210 - 235	144 - 160	150	0,6	6	1,5
76002355	MAC 2355	210 - 235	170 - 192	150	0,6	6	1,5
76002356	MAC 2356	210 - 235	190 - 215	150	0,6	6	1,5
76002505	MAC 2505	225 - 250	155 - 170	150	0,6	6	1,4
76002507	MAC 2507	225 - 250	195 - 220	150	0,6	6	1,5
76002508	MAC 2508	225 - 250	205 - 230	150	0,6	6	1,6
76002654	MAC 2654	240 - 265	144 - 160	150	0,6	6	1,8
76002655	MAC 2655	240 - 265	170 - 192	150	0,6	6	1,7
76002656	MAC 2656	240 - 265	190 - 215	150	0,6	6	1,7
76002657	MAC 2657	240 - 265	210 - 235	150	0,6	6	1,7
76002753	MAC 2753	250 - 275	155 - 170	165	0,6	6	2,1
76002755	MAC 2755	250 - 275	195 - 220	165	0,6	6	2,3
76002904	MAC 2904	265 - 290	144 - 160	150	0,6	6	2,0
76002905	MAC 2905	265 - 290	170 - 192	150	0,6	6	1,8
76002906	MAC 2906	265 - 290	190 - 215	150	0,6	6	2,0
76002907	MAC 2907	265 - 290	210 - 235	150	0,6	6	2,0
76002908	MAC 2908	265 - 290	240 - 265	150	0,6	6	1,9
76003003	MAC 3003 offset	275 - 300	180 - 200	150	0,6	6	1,4
76003157	MAC 3157	290 - 315	245 - 270	165	0,6	6	2,0
76003158	MAC 3158	290 - 315	260 - 285	165	0,6	6	2,1
76003204	MAC 3204	295 - 320	144 - 160	150	0,6	6	2,7
76003205	MAC 3205	295 - 320	170 - 192	150	0,6	6	2,6
76003206	MAC 3206	295 - 320	190 - 215	150	0,6	6	2,1
76003207	MAC 3207	295 - 320	210 - 235	150	0,6	6	2,5

PRODUCT RANGE 

ADAPTOR COUPLING MAC							
Article Number	Reference	A Size Range (mm)	B Size Range (mm)	L Length (mm)	resistant to (bar)	Nm	Weight (kg)
76003208	MAC 3208	295 - 320	240 - 265	150	0,6	6	2,6
76003209	MAC 3209	295 - 320	265 - 290	150	0,6	6	2,5
76003257	MAC 3257	300 - 325	250 - 275	165	0,6	6	2,7
76003307	MAC 3307	305 - 330	245 - 270	150	0,6	6	1,7
76003351	MAC 3351 offset	310 - 335	180 - 205	150	0,6	6	2,2
76003357	MAC 3357	310 - 335	295 - 320	150	0,6	6	1,8
76003600	MAC 3600	335 - 360	295 - 320	165	0,6	6	3,1
76003606	MAC 3606	335 - 360	190 - 215	165	0,6	6	3,1
76003607	MAC 3607	335 - 360	210 - 235	165	0,6	6	3,0
76003608	MAC 3608	335 - 360	240 - 260	165	0,6	6	3,2
76003609	MAC 3609	335 - 360	265 - 290	165	0,6	6	3,1
76003708	MAC 3708	345 - 370	300 - 325	165	0,6	6	2,6
76003709	MAC 3709	345 - 370	310 - 335	165	0,6	6	2,5
76003850	MAC 3850	360 - 385	300 - 325	165	0,6	6	3,0
76004608	MAC 4608	435 - 460	360 - 385	180	0,6	6	2,6
76005150	MAC 5150	490 - 510	385 - 410	165	0,6	6	3,8





Drain Coupling

MDC

- + Coupling for same outside diameters
- + For above and below ground
- + Reliable and durable solution
- + Resistant to 0.6 bar

Drain Coupling MDC - for the connection of all pipe systems with same outside diameters

The Drain Coupling MDC connects all plain ended pipes with same outside diameters and materials.

The Drain Coupling MDC can be used for applications above and below ground as well as inside and outside of buildings.



INSTALLATION



Position plain ended pipes.

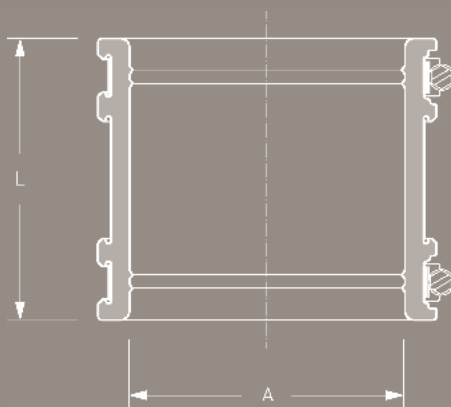


Slide coupling over one plain end.



Center coupling over joint. Tighten clamps.

DESCRIPTION



TECHNICAL SPECIFICATION

Drain Coupling MDC for the connection of all plain ended pipe systems with same outside diameters for applications above and below ground as well as inside and outside of buildings.

Pipe 1 DN/Material _____
 Pipe 2 DN/Material _____

Article Number _____
 Qty Price/Unit Total

Manufacturer: MÜCHER DICHTUNGEN®, D-50226 Frechen, T +49 2234 928 03-0, F-55
 Pressure Tightness: 0.6 bar water / -0.3 bar vacuum
 Jetting Resistance: 120 bar
 Sealing Material: EPDM or Nitrile (NBR) rubber with lock in place profile according to DIN EN 681-1

Stainless Steel: AISI 304/1.4301, alternatively AISI 316/1.4404 according to DIN EN 10088-2

Temperature Resistance: -40°C to +120°C, temporary max. temperature +160°C

Standard/Approval: DIN EN 16397-2, European Technical Approval ETA-09/0248, CE15



PRODUCT RANGE 

DRAIN COUPLING MDC						
Article Number	Reference	A Size Range (mm)	L Length (mm)	resistant to (bar)	Nm	Weight (kg)
76481958	MDC 115	100 - 115	120	0,6	6	0,4
76481959	MDC 120	105 - 120	120	0,6	6	0,4
76481960	MDC 137	120 - 137	120	0,6	6	0,4
76481961	MDC 150	125 - 150	120	0,6	6	0,5
76481962	MDC 162	137 - 162	120	0,6	6	0,5
76481964	MDC 175	150 - 175	120	0,6	6	0,6
76481966	MDC 190	165 - 190	150	0,6	6	0,6
76481978	MDC 200	175 - 200	150	0,6	6	0,6
76481980	MDC 212	187 - 212	150	0,6	6	0,6
76481982	MDC 225	200 - 225	150	0,6	6	0,7
76481983	MDC 250	225 - 250	150	0,6	6	0,7
76481984	MDC 275	250 - 275	150	0,6	6	0,8
76481290	MDC 290	265 - 290	150	0,6	6	0,9

Larger sizes are available on request.



Joint for footed concrete pipes

MULTI-STEP

- + Connection of footed and circular pipes
- + For all pipe materials
- + Easy installation on site
- + Resistant to 0.5 bar

MULTI-STEP – internal joint for the connection of footed to circular pipes

MULTI-STEP connects footed concrete pipes with circular pipes from other materials. MULTI-STEP allows the punctual repair of footed concrete pipes within the operating sewer.

The MULTI-STEP joint consists of an EPDM elastomer with an internal steel body.

Circular pipes can be connected with footed concrete pipes as well as circular pipes among each other.



INSTALLATION



Remove damaged pipe section.

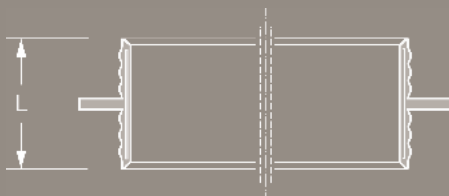


Chamfer pipes and insert MULTI-STEP. Slide short pipe section over MULTI-STEP.



Insert new pipe section and joint with a standard coupling.

DESCRIPTION



TECHNICAL SPECIFICATION

Joint MUTLI-STEP for the connection of footed concrete pipes with circular pipes from other materials (e.g. clay, plastic, etc.).

Pipe 1 DN/Material _____
 Pipe 2 DN/Material _____

Article Number _____
 _____ Qty _____ Price/Unit _____ Total

Manufacturer: MÜCHER DICHTUNGEN®, D-50226 Frechen, T +49 2234 928 03-0, F-55
 Pressure Tightness: 0.5 bar water / -0.3 bar vacuum
 Sealing Material: EPDM rubber with internal steel body according to DIN EN 681-1
 Temperature Resistance: -40°C to +120°C, temporary max. temperature +160°C
 Standard/Approval: DIN EN 681-1, CE06



PRODUCT RANGE 

JOINT FOR FOOTED CONCRETE PIPES MULTI-STEP					
Article Number	Reference	Internal Pipe Ø (mm)	L Length (mm)	resistant to (bar)	Weight (kg)
85100300	Multi-Step DN 300	298-302	135	0,5	2,8



ROLL-RING

- + Connection to sockets without seal
- + Socket connection remains
- + Reliable and durable solution
- + Resistant to 0.5 bar

Roll-Ring - for the connection of spigots from all pipe materials to sockets without seal

The Roll-Ring connects spigots from all materials to sockets without seal (e.g. clay or concrete).

By using the Roll-Ring there is no need for cutting off the socket and connecting with a flexible coupling.

The Roll-Ring is individually produced to the customer's requirements, to provide the right compression for effective sealing.



INSTALLATION



Do not use lubricant.

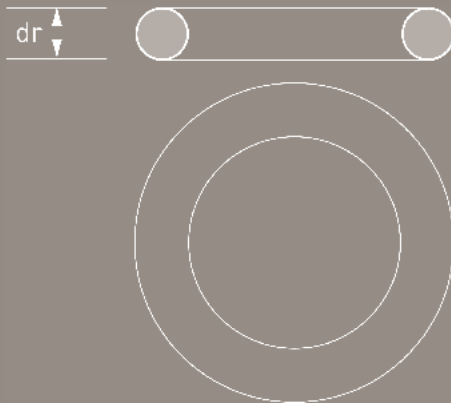


Position Roll-Ring in front of socket.



Push spigot into socket.

DESCRIPTION



TECHNICAL SPECIFICATION

Roll-Ring for the connection of spigots from all pipe materials to sockets without seal.

Pipe 1	DN/Material	_____
	Socket Internal Ø (mm)	_____
Pipe 2	DN/Material	_____
	External Ø (mm)	_____

Article Number _____
 ___ Qty ___ Price/Unit ___ Total

Manufacturer:	MÜCHER DICHTUNGEN®, D-50226 Frechen, T +49 2234 928 03-0, F-55
Pressure Tightness:	0.5 bar water / -0.3 bar vacuum
Sealing Material:	SBR rubber according to DIN EN 681-1
Temperature Resistance:	-40°C to +80°, temporary max. temperature +130°C
Standard/Approval:	DIN EN 681-1, CE06



PRODUCT RANGE 

ROLL-RING								
Article Number	Reference	DN	Pipe Material Spigot	Outside-Ø (mm)	Internal-Socket Ø (mm)	dr String Strength (mm)	resistant to (bar)	Weight (kg)
3010016	Roll-Ring Clay DN 100 16 mm	100	Clay	131	150-160	16	0,5	0,1
3010018	Roll-Ring Clay DN 100 18 mm	100	Clay	131	151-161	18	0,5	0,1
3010020	Roll-Ring Clay DN 100 20 mm	100	Clay	131	152-162	20	0,5	0,1
3010022	Roll-Ring Clay DN 100 22 mm	100	Clay	131	153-163	22	0,5	0,1
5010032	Roll-Ring SML/PVC DN 100 32 mm	100	SML/PVC	110	156-162	32	0,5	0,3
3012518	Roll-Ring Clay DN 125 18 mm	125	Clay	159	178-190	18	0,5	0,1
3012520	Roll-Ring Clay DN 125 20 mm	125	Clay	159	179-191	20	0,5	0,1
3012522	Roll-Ring Clay DN 125 22 mm	125	Clay	159	180-192	22	0,5	0,1
3012524	Roll-Ring Clay DN 125 24 mm	125	Clay	159	181-193	24	0,5	0,2
5012534	Roll-Ring SML DN 125 34 mm	125	SML	135	184-190	34	0,5	0,3
5012543	Roll-Ring PVC DN 125 43 mm	125	PVC	125	184-190	43	0,5	0,5
3015020	Roll-Ring Clay DN 150 20 mm	150	Clay	186	207-219	20	0,5	0,1
3015022	Roll-Ring Clay DN 150 22 mm	150	Clay	186	208-220	22	0,5	0,2
3015024	Roll-Ring Clay DN 150 24 mm	150	Clay	186	209-221	24	0,5	0,2
3015026	Roll-Ring Clay DN 150 26 mm	150	Clay	186	210-222	26	0,5	0,3
5015034	Roll-Ring FC DN 150 34 mm	150	Fibre Cement	176	214-222	34	0,5	0,4
5015040	Roll-Ring SML/PVC DN 150 40 mm	150	SML/PVC	160	215-223	40	0,5	0,5
3020022	Roll-Ring Clay DN 200 22 mm	200	Clay	242	265-279	22	0,5	0,2
3020024	Roll-Ring Clay DN 200 24 mm	200	Clay	242	266-280	24	0,5	0,3
3020026	Roll-Ring Clay DN 200 26 mm	200	Clay	242	267-281	26	0,5	0,3
5020046	Roll-Ring SML DN 200 46 mm	200	SML	210	275-283	46	0,5	1,1
5020051	Roll-Ring PVC DN 200 51 mm	200	PVC	200	274-282	51	0,5	1,1
3025026	Roll-Ring Clay DN 250 26 mm	250	Clay	299	324-334	26	0,5	0,4
3025028	Roll-Ring Clay DN 250 28 mm	250	Clay	299	325-335	28	0,5	0,4
3030028	Roll-Ring Clay DN 300 28 mm	300	Clay	355	380-390	28	0,5	0,5
3030030	Roll-Ring Clay DN 300 30 mm	300	Clay	355	381-391	30	0,5	0,6
3030032	Roll-Ring Clay DN 300 32 mm	300	Clay	355	382-392	32	0,5	0,6

Further sizes are available on request. Roll-Rings are available in string strengths 10-51 mm.



P-RING

- + Replacement of clay pipe spigot seal
- + For use of shortened clay pipes
- + Joint system C
- + Resistant to 0.6 bar

P-Ring - for the replacement of the clay pipe spigot seal for shortened clay pipes

The P-Ring connects shortened clay pipes with clay sockets (joint system C according to DIN EN 295). P-Rings are available for both normal and high strength purposes.

The internal steel ring assures the ideal positioning of the P-Ring when pushing pipes together.



INSTALLATION



Install P-Ring on spigot.

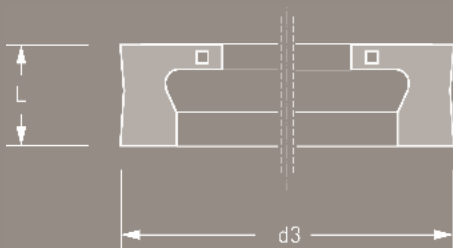


Apply lubricant to socket and P-Ring.



Push pipes together.

DESCRIPTION



TECHNICAL SPECIFICATION

P-Ring with internal steel ring for the connection of shortened clay pipe according to joint system C, DIN EN 295.

Clay Pipe DN/Strength _____

Article Number _____

___ Qty ___ Price/Unit ___ Total

Manufacturer: MÜCHER DICHTUNGEN®, D-50226 Frechen, T +49 2234 928 03-0, F-55
 Pressure Tightness: 0.6 bar water / -0.3 bar vacuum
 Sealing Material: EPDM rubber according to DIN EN 681-1
 Temperature Resistance: -40°C to +120°C, temporary max. temperature +160°C
 Standard/Approval: DIN EN 295-4, CE06

**PRODUCT RANGE**

P-RING					
Article Number	Reference	d3 Functional Area (mm)	L Length (mm)	resistant to (bar)	Weight (kg)
24720060	P-Ring DN 200 N	238 - 244	31	0,6	0,4
24720070	P-Ring DN 200 H	249 - 256	31	0,6	0,6
24725060	P-Ring DN 250 N	295 - 302	31	0,6	0,6
24725070	P-Ring DN 250 H	312 - 319	31	0,6	0,7
24730060	P-Ring DN 300 N	350 - 357	31	0,6	0,6
24730070	P-Ring DN 300 H	373 - 381	31	0,6	1,0
24740060	P-Ring DN 400 N	481 - 490	31	0,6	1,2
24740070	P-Ring DN 400 H	484 - 493	31	0,6	1,4
24750060	P-Ring DN 500 N	577 - 587	31	0,6	1,3
24750070	P-Ring DN 500 H	600 - 610	31	0,6	2,0
24760060	P-Ring DN 600 N	679 - 693	31	0,6	1,8
24760070	P-Ring DN 600 H	713 - 728	31	0,6	2,5



Ü-P-RING

- + Connection of thin walled pipes to clay sockets
- + Socket connection remains
- + Joint system C
- + Resistant to 0.6 bar

Ü-P-Ring – for the connection of spigots made from plastic, ductile or cast iron to clay sockets

The Ü-P-Ring connects thin walled pipes with clay sockets (joint system C according to DIN EN 295).

The internal steel ring assures the ideal positioning of the Ü-P-Ring when pushing pipes together.



INSTALLATION



Install Ü-P-Ring on spigot.

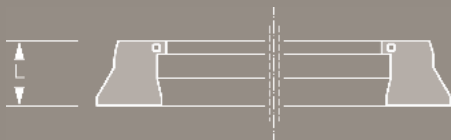


Apply lubricant to socket and Ü-P-Ring.



Push pipes together.

DESCRIPTION



TECHNICAL SPECIFICATION

Ü-P-Ring with internal steel ring for the connection of thin walled pipes (plastic, cast iron, GRP) to clay sockets according to joint system C, DIN EN 295.

Clay Pipe DN/Strength _____
 Connecting Pipe DN/Material _____

Article Number _____
 Qty Price/Unit Total

Manufacturer: MÜCHER DICHTUNGEN®, D-50226 Frechen, T +49 2234 928 03-0, F-55
 Pressure Tightness: 0.6 bar water / -0.3 bar vacuum
 Sealing Material: EPDM rubber according to DIN EN 681-1
 Temperature Resistance: -40°C to +120°C, temporary max. temperature +160°C
 Standard/Approval: DIN EN 295-4, CE06

**PRODUCT RANGE**

Ü-P-RING						
Article Number	Reference	Outside Ø Spigot (mm)	d4 Internal Socket Ø (mm)	L Length (mm)	resistant to (bar)	Weight (kg)
22502000	Ü-P-Ring Clay DN 200 N / PVC	200	260,0	33	0,6	1,0
22502100	Ü-P-Ring Clay DN 200 N / SML	210	260,0	33	0,6	0,8
22502220	Ü-P-Ring Clay DN 200 N / GGG-FC	222	260,0	33	0,6	0,7
22502500	Ü-P-Ring Clay DN 250 N / PVC	250	317,5	33	0,6	1,3
22502740	Ü-P-Ring Clay DN 250 N / SML	274	317,5	33	0,6	0,8



M-P-RING

- + Changing from normal to high strength
- + Connection of clay spigot to clay socket
- + Joint system C
- + Resistant to 0.6 bar

M-P-Ring DN 200 – for the connection of clay spigots with normal strength to clay sockets with high strength

The M-P-Ring DN 200 connects clay spigots with normal strength with seal (socket K or S-Ring) to sockets with high strength (socket K or S).

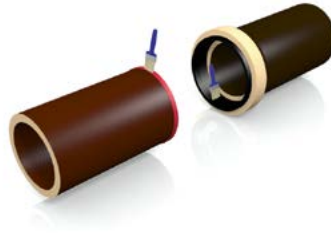
The change from normal to high strength can be done on the clay pipe run or when connecting to concrete manholes (extra strength BKK, extra strength GM-fitting).



INSTALLATION



Insert M-P-Ring into clay socket.

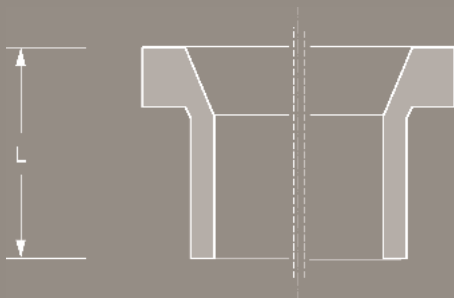


Apply lubricant to socket and M-P-Ring.



Push spigot into socket.

DESCRIPTION



TECHNICAL SPECIFICATION

M-P-Ring DN 200 for changing from normal to high strength on the pipe run or when connecting to concrete manholes from clay spigots with normal strength to sockets with high strength (socket K or S) according to joint system C, DIN EN 295.

Article Number _____

___ Qty ___ Price/Unit ___ Total

Manufacturer:

MÜCHER DICHTUNGEN®, D-50226 Frechen, T +49 2234 928 03-0, F-55

Pressure Tightness:

0.6 bar water / -0.3 bar vacuum

Sealing Material:

EPDM rubber according to DIN EN 681-1

Temperature Resistance: -40°C to +120°C, temporary max. temperature +160°C

Standard/Approval:

DIN EN 295-4, CE06, MPA Test Certificate No. 22 8076499-01-2



PRODUCT RANGE 

M-P-RING						
Article Number	Reference	Clay Spigot (mm)	Clay Socket	L Length (mm)	resistant to (bar)	Weight (kg)
22602000	M-P-Ring DN 200 N/H	DN 200 N	DN 200 H	72	0,6	0,9



Ü-RING

- + Connecting thin walled pipes to clay sockets
- + Socket connection remains
- + Joint system F
- + Resistant to 0.6 bar

Ü-Ring - for the connection of spigots made from plastic, ductile or cast iron to clay sockets

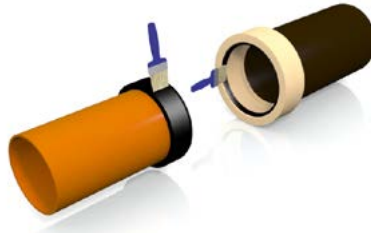
The Ü-Ring DN 200 connects clay thin walled pipes (plastic ductile or cast iron) to clay sockets (joint system F, DIN EN 295).



INSTALLATION



Install Ü-Ring on spigot.

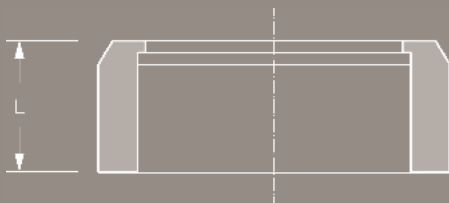


Apply lubricant to socket and Ü-Ring.



Push spigot into socket.

DESCRIPTION



TECHNICAL SPECIFICATION

Ü-Ring for the connection of thin walled pipes (plastic, cast iron, GRP) to clay sockets according to joint system F, DIN EN 295.

Clay Pipe DN _____
 Connecting Pipe DN/Material _____

Article Number _____
 ___ Qty ___ Price/Unit ___ Total

Manufacturer: MÜCHER DICHTUNGEN®, D-50226 Frechen, T +49 2234 928 03-0, F-55
 Pressure Tightness: 0.6 bar water / -0.3 bar vacuum
 Jetting Resistance: 120 bar
 Sealing Material: EPDM rubber according to DIN EN 681-1
 Temperature Resistance: -40°C to +120°C, temporary max. temperature +160°C
 Standard/Approval: DIN EN 295-4, CE06



PRODUCT RANGE 

Ü-RING						
Article Number	Reference	Outside Ø Spigot (mm)	Clay Pipe Lip-Seal	L Length (mm)	resistant to (bar)	Weight (kg)
20210012	Ü-Ring Clay DN 100 SML/PVC	110	L	60	0,6	0,3
20212511	Ü-Ring Clay DN 125 PVC	125	L	60	0,6	0,3
20212510	Ü-Ring Clay DN 125 SML	135	L	60	0,6	0,4
20215012	Ü-Ring Clay DN 150 SML/PVC	160	L	60	0,6	0,6
20215013	Ü-Ring Clay DN 150 GGG/FC	170	L	60	0,6	0,3
20220020	Ü-Ring Clay DN 200 PVC	200	L	68	0,6	0,9
20220010	Ü-Ring Clay DN 200 SML	210	L	68	0,6	0,9



A-RING

- + Connecting to sockets without seal
- + Clay to socket (cast iron, plastic)
- + Joint system F
- + Resistant to 0.6 bar

A-Ring - for the connection of clay spigots to sockets without seal made from other pipe materials

The A-Ring connects clay spigots (joint system F according to DIN EN 295) to cast iron or plastic sockets without seal.

The internal steel ring assures the ideal positioning of the A-Ring when pushing pipes together.



INSTALLATION



Insert A-Ring in socket.

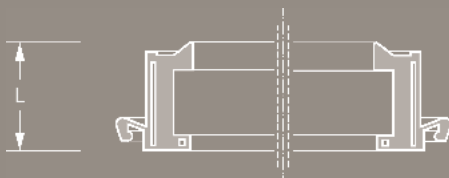


Apply lubricant to A-Ring.



Push spigot into socket.

DESCRIPTION



TECHNICAL SPECIFICATION

A-Ring with internal steel ring for the connection of clay spigots according to joint system F, DIN EN 295 to sockets made from cast iron or plastic.

Socket DN/Material _____

Article Number _____

___ Qty ___ Price/Unit ___ Total

Manufacturer: MÜCHER DICHTUNGEN®, D-50226 Frechen, T +49 2234 928 03-0, F-55
 Pressure Tightness: 0.6 bar water / -0.3 bar vacuum
 Jetting Resistance: 120 bar
 Sealing Material: EPDM rubber according to DIN EN 681-1
 Temperature Resistance: -40°C to +120°C, temporary max. temperature +160°C
 Standard/Approval: DIN EN 295-4, CE06



PRODUCT RANGE 

A-RING						
Article Number	Reference	Outside Ø Spigot (mm)	Internal Socket Ø (mm)	L Length (mm)	resistant to (bar)	Weight (kg)
37010100	A-Ring DN 100	131	159 +/- 2,0	60	0,6	0,4
37010125	A-Ring DN 125	159	187 +/- 3,5	60	0,6	0,6
37010150	A-Ring DN 150	186	218 +/- 3,5	60	0,6	0,8
37010200	A-Ring DN 200	242	278 +/- 3,5	60	0,6	1,1



Wedge-Shaped Seal

MKG

- + Seal for concrete manholes
- + Fixed seal
- + Caoutchouc elastomer according to DIN EN 681-1
- + Resistant to 0.5 bar

Wedge-Shaped Seal MKG – for the connection of manhole rings according to DIN 4034

The Wedge-Shaped Seal MKG is used for sealing concrete manholes. The seal is made from a caoutchouc elastomer with a dense structure. It is positioned on the spigot of the manhole shaft and is compressed between the manhole rings.



INSTALLATION



Slide MKG seal over spigot.

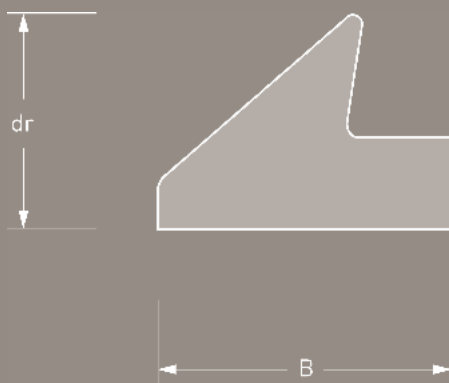


Apply lubricant to MKG seal.



Push manhole rings together.

DESCRIPTION



TECHNICAL SPECIFICATION

Wedge-Shaped Seal MKG for concrete manholes according to DIN 4034. The connection requires testing according to DIN EN 1610.

DN _____

Article Number _____

___ Qty ___ Price/Unit ___ Total

Manufacturer:	MÜCHER DICHTUNGEN®, D-50226 Frechen, T +49 2234 928 03-0, F-55
Pressure Tightness:	0.5 bar water
Sealing Material:	SBR rubber according to DIN EN 681-1
Temperature Resistance:	-40°C to +80°C, temporary max. temperature +130°C
Standard/Approval:	DIN 4060, DIN 4034, DIN EN 1917, CE06

PRODUCT RANGE 

WEDGE-SHAPED SEAL FOR MANHOLES							
Article Number	Reference	dr Hight of Profile (mm)	B Contact Surface (mm)	Socket Gap min. (mm)	Socket Gap max. (mm)	resistant to (bar)	Weight (kg)
35303058	MKG DN 1000, 18 mm	18	30	8,4	12,6	0,5	0,9
35303060	MKG DN 1000, 20 mm	20	32	9,3	14,0	0,5	1,3
35360061	MKG DN 1200, 21 mm	21	36	9,8	14,7	0,5	1,8
35450065	MKG DN 1500, 25 mm	25	44	11,7	17,5	0,5	3,0

WEDGE-SHAPED SEAL MKG 30			
dr Hight of Profile (mm)	B Contact Surface (mm)	Socket Gap min. (mm)	Socket Gap max. (mm)
12	22	5,6	8,4
14	26	6,5	9,8
16	30	7,5	11,2
18	33	8,4	12,6
20	37	9,3	14,0
22	41	10,3	15,4
24	44	11,2	16,8
26	48	12,1	18,2
28	52	13,1	19,6
30	55	14,0	21,0
32	59	19,9	22,4

WEDGE-SHAPED SEAL MKG 40			
dr Hight of Profile (mm)	B Contact Surface (mm)	Socket Gap min. (mm)	Socket Gap max. (mm)
12	20	5,6	8,4
14	24	6,5	9,8
16	27	7,5	11,2
18	30	8,4	12,6
19	31	8,9	13,3
20	32	9,3	14,0
21	36	9,8	14,7
22	38	10,3	15,4
24	42	11,2	16,8
25	44	11,7	17,5
26	45	12,1	18,2
27	46	12,6	18,9
28	52	13,1	19,6
30	52	14,0	21,0
32	56	19,9	22,4



Jointing Element

BKL

- + Joint integrated in concrete manholes
- + Polystyrene supporting element
- + Joint system F
- + Resistant to 0.5 bar

BKL Jointing Element - for the connection of clay pipes to concrete manholes and road gullies

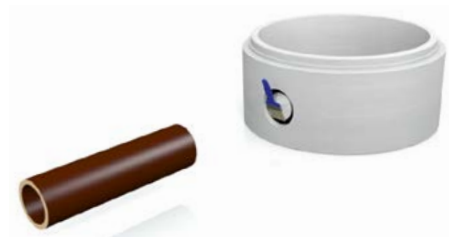
The BKL Jointing Element is integrated into concrete manholes or road gullies (socket L, joint system F) when manufactured.

To get the necessary space for installation, the BKL Jointing Element is installed together with a polystyrene supporting element.

INSTALLATION



Remove polystyrene from socket.

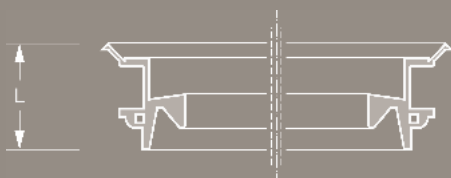


Apply lubricant to BKL joint.



Push pipe into socket.

DESCRIPTION



TECHNICAL SPECIFICATION

BKL Jointing Element including polystyrene supporting element according to DIN EN 295-4 for the connection of clay pipes (joint system F) to concrete manholes or road gullies according to DIN 4034 and DIN EN 1917.

DN _____

Article Number _____

___ Qty ___ Price/Unit ___ Total

Manufacturer: MÜCHER DICHTUNGEN®, D-50226 Frechen, T +49 2234 928 03-0, F-55
 Pressure Tightness: 0.5 bar water
 Sealing Material: EPDM rubber according to DIN EN 681-1
 Temperature Resistance: -40°C to +120°C, temporary max. temperature +160°C
 Standard/Approval: DIN EN 295-4, CE06



PRODUCT RANGE 

BKL JOINTING ELEMENT				
Article Number	Reference	L Length (mm)	resistant to (bar)	Weight (kg)
36065150	BKL DN 150 incl. supporting element type 1	38	0,5	0,2
36065151	BKL DN 150 incl. supporting element type 2	38	0,5	0,2
36065200	BKL DN 200 incl. supporting element	38	0,5	0,3

Z-JOINT



- + For Road Gullies (wet sludge trap)
- + Excellent damping behaviour
- + Protection of concrete gully
- + Resistant to 0.5 bar

Z-JOINT – for concrete road gullies

The Z-Joint DN 450 is used for concrete road gullies with a wet sludge trap according to DIN 4052.

The Z-joint is positioned on the gully rings and is compressed between them.

A better damping behavior is achieved, hence resulting in a longer life cycle of the concrete road gully. The traffic loads can be absorbed more constantly.



INSTALLATION



Clean sealing surface.

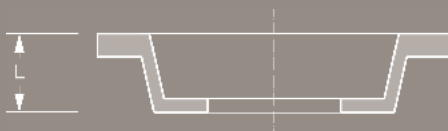


Insert Z-joint.



Push gully rings together.

DESCRIPTION



TECHNICAL SPECIFICATION

Z-joint DN 450 for the connection of gully rings for concrete road gullies with a wet sludge trap according to DIN 4052.

Article Number _____

___ Qty ___ Price/Unit ___ Total

Manufacturer:	MÜCHER DICHTUNGEN®, D-50226 Frechen, T +49 2234 928 03-0, F-55
Pressure Tightness:	0.5 bar water
Sealing Material:	EPDM rubber according to DIN EN 681-1
Temperature Resistance:	-40°C to +120°C, temporary max. temperature +160°C
Standard/Approval:	DIN 4052, CE06



PRODUCT RANGE 

Z-JOINT FOR ROAD GULLIES					
Article Number	Reference	Road Gully System	L Length (mm)	resistant to (bar)	Weight (kg)
12045030	Z-joint DN 450	according to DIN 4052	36	0,5	1,0



Sewer Saddle

T-FLEX

- + For main sewers with smooth surface
- + For all sewer materials
- + Sealing against the outer sewer wall
- + Resistant to 0.5 bar

Sewer Saddle T-Flex - for connecting lateral pipes to existing sewers or drains

The seal of the Sewer Saddle T-Flex is formed by compression of the rubber apron against the outer sewer wall and connects laterals to existing sewers or drains with a smooth surface.

The size range of the Sewer Saddle T-Flex is designed to fit plain ended plastic pipes.

The tolerances of the Sewer Saddle T-Flex allow the use of standard core drills.



INSTALLATION



Drill and clean hole 90° to pipe axis.

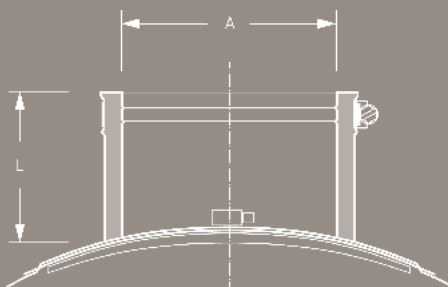


Position T-Flex centrally over cored hole and tighten clamps around the main sewer.



Push lateral pipe into saddle and tighten clamp.

DESCRIPTION



TECHNICAL SPECIFICATION

Sewer Saddle T-Flex for connecting lateral pipes to existing sewers or drains with a smooth surface.

Main Sewer DN/Material _____
 Lateral Pipe DN/Material _____

Article Number _____
 ___ Qty ___ Price/Unit ___ Total

Manufacturer: MÜCHER DICHTUNGEN®, D-50226 Frechen, T +49 2234 928 03-0, F-55
 Pressure Tightness: 0.5 bar water
 Sealing Material: EPDM rubber according to DIN EN 681-1
 Stainless Steel: AISI 304/1.4301 according to DIN EN 10088-2
 Temperature Resistance: -40°C to +120°C, temporary max. temperature +160°C
 Standard/Approval: DIN EN 681-1, CE06, MPA Test Certificate No. 22 00003601-02-1



PRODUCT RANGE

SEWER SADDLE T-FLEX								
Article Number	Reference	A Size Range (mm)	Outside Ø Main Sewer (mm)	Core Drill (mm)	L Length (mm)	resistant to (bar)	Nm	Weight (kg)
28104629	T-FLEX DN 100	105-120	200-400	117-127	88	0,5	6	1,0
28105125	T-FLEX DN 125	115-130	200-400	126-142	88	0,5	6	1,2
28106634	T-FLEX DN 150	150-170	250-500	167-177	97	0,5	6	2,0
28108630	T-FLEX DN 200	175-200	300-500	203-217	100	0,5	10	3,1

CORE DRILL				
Article Number	Reference	Core Drill (mm)	L Length (mm)	Weight (kg)
32601110	Core Drill 127 mm	127	110	1,5
32601125	Core Drill 142 mm	142	110	1,6
32601160	Core Drill 177 mm	177	110	2,1
32601200	Core Drill 217 mm	217	110	2,8





Lateral Connector

LTC

- + Connecting PP/PVC to Twin Wall or Ultra-Rib
- + Universal connector for many sewers
- + Reliable and durable solution
- + Resistant to 0.5 bar

Lateral Connector LTC - for connecting lateral plastic pipes to existing structured walled main sewers

The Lateral Connector LTC connects smooth walled plastic pipes to existing structured walled sewers like Twin Wall or Ultra-Rib and offers an economical and easy to install solution on site.

The Lateral Connector LTC can be generally used for various structured walled sewers, depending on the wall thickness (see application advices).



INSTALLATION



Drill and clean hole 90° to pipe axis.

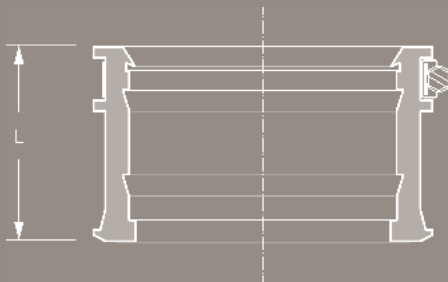


Insert LTC into main sewer.



Push lateral pipe into LTC and tighten clamp.

DESCRIPTION



TECHNICAL SPECIFICATION

Lateral Connector LTC for connecting lateral plastic pipes to existing structured walled main sewers.

Main Sewer DN/Material _____
Lateral Pipe DN _____

Article Number _____
___ Qty ___ Price/Unit ___ Total

Manufacturer: MÜCHER DICHTUNGEN®, D-50226 Frechen, T +49 2234 928 03-0, F-55
 Pressure Tightness: 0.5 bar water
 Sealing Material: EPDM rubber according to DIN EN 681-1
 Stainless Steel: AISI 304/1.4301, alternatively AISI 316/1.4404 according to DIN EN 10088-2
 Temperature Resistance: -40°C to +120°C, temporary max. temperature +160°C
 Standard/Approval: DIN EN 681-1, CE06, MPA Test Certificate No. 22 0004535



PRODUCT RANGE 

LATERAL CONNECTOR LTC FOR STRUCTURED WALLED MAIN SEWERS								
Article Number	Reference	Outside Ø Lateral Pipe (mm)	DN Main Sewer (mm)	Core Drill (mm)	L Length (mm)	resistant to (bar)	Nm	Weight (kg)
32600110	LTC DN 100	110	from DN 300	127	90	0,5	6	0,50
32600125	LTC DN 125	125	from DN 300	142	90	0,5	6	0,55
32600160	LTC DN 150	160	from DN 300	177	90	0,5	6	0,70
32600200	LTC DN 200	200	from DN 350	217	125	0,5	6	1,15

Application advices:

- Lateral Connectors LTC DN 100, DN 125 and DN 150 can be used if the wall thickness of the main sewer is not larger than 55 mm.
- Lateral Connector LTC DN 200 can be used if the wall thickness of the main sewer is not larger than 90 mm.

CORE DRILL				
Article Number	Reference	Core Drill (mm)	L Length (mm)	Weight (kg)
32601110	Core Drill 127 mm	127	110	1,50
32601125	Core Drill 142 mm	142	110	1,60
32601160	Core Drill 177 mm	177	110	2,10
32601200	Core Drill 217 mm	217	110	2,80





Lateral Connector

M40

- + Connecting thin walled laterals to concrete sewers
- + Reliable and durable solution
- + EPDM rubber profile
- + Resistant to 0.5 bar

Lateral Connector M40 – for connecting thin walled lateral pipes to concrete main sewers (minimum wall thickness 45 mm)

The Lateral Connector M40 connects thin walled pipes (e.g. plastic, cast iron, etc.) to concrete main sewers with a minimum wall thickness of 45 mm.



INSTALLATION



Drill and clean hole 90° to pipe axis.

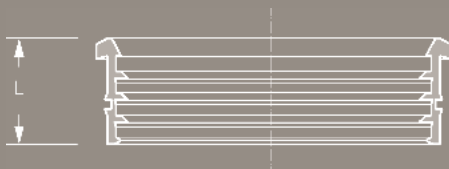


Insert M40 into main sewer.



Apply lubricant to lateral plain end and push lateral into M40.

DESCRIPTION



TECHNICAL SPECIFICATION

Lateral Connector M40 for connecting thin walled lateral pipes to existing concrete main sewers with a minimum wall thickness of 45 mm.

Main Sewer _____ DN/Material
Lateral Pipe _____ DN

Article Number _____
_____ Qty _____ Price/Unit _____ Total

Manufacturer: MÜCHER DICHTUNGEN®, D-50226 Frechen, T +49 2234 928 03-0, F-55
Pressure Tightness: 0.5 bar water
Jetting Resistance: 120 bar
Sealing Material: EPDM rubber according to DIN EN 681-1
Temperature Resistance: -40°C to +120°C, temporary max. temperature +160°C
Standard/Approval: DIN EN 681-1, CE06, MPA Test Certificate No. 22 1743097-02



PRODUCT RANGE

LATERAL CONNECTOR M40							
Article Number	Reference	Outside Ø Lateral Pipe (mm)	Min. Wall Thickness Main Sewer (mm)	Core Drill (mm)	L Length (mm)	resistant to (bar)	Weight (kg)
32200100	M40 DN 100 PVC	110	45	122	48	0,5	0,1
32200125	M40 DN 125 PVC	125	45	137	48	0,5	0,2
32200150	M40 DN 150 PVC	160	45	172	48	0,5	0,2
32200200	M40 DN 200 PVC	200	45	212	48	0,5	0,3
32200250	M40 DN 250 PVC	250	45	262	48	0,5	0,3
32200300	M40 DN 300 PVC	315	45	327	48	0,5	0,3
32200400	M40 DN 400 PVC	400	45	412	48	0,5	0,4
32100100	M40 DN 100 SML	110	45	122	48	0,5	0,1
32100125	M40 DN 125 SML	135	45	147	48	0,5	0,2
32100150	M40 DN 150 SML	160	45	172	48	0,5	0,2
32400100	M40 DN 100 GGG	118	45	130	48	0,5	0,2
32400150	M40 DN 150 GGG	170	45	182	48	0,5	0,2



Lateral Connector

M140

- + Connecting thin walled laterals to concrete sewers
- + Reliable and durable solution
- + Adaptable to pipe wall thickness
- + Resistant to 0.5 bar

Lateral Connector M140 – for connecting thin walled lateral pipes to concrete main sewers

The Lateral Connector M140 connects thin walled pipes (e.g. plastic, cast iron, etc.) to concrete main sewers.

The design of the Lateral Connector M140 allows cutting the connector to the length of the main sewer wall thickness.



INSTALLATION



Drill and clean hole 90° to pipe axis.

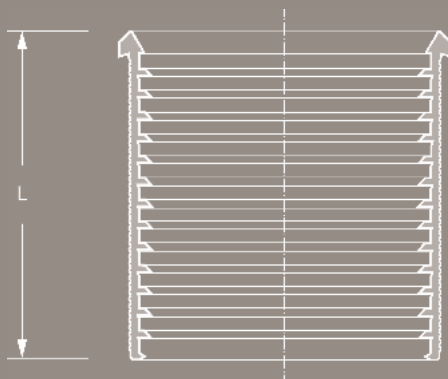


Cut M140 to length of wall thickness and insert M140 into main sewer.



Apply lubricant to lateral plain end and push lateral into M140.

DESCRIPTION



TECHNICAL SPECIFICATION

Lateral Connector M140 for connecting thin walled lateral pipes to existing concrete main sewers, covering a wall thickness of maximum 140 mm.

Main Sewer DN/Material _____
 Lateral Pipe DN/Material _____

Article Number _____
 ___ Qty ___ Price/Unit ___ Total

Manufacturer: MÜCHER DICHTUNGEN®, D-50226 Frechen, T +49 2234 928 03-0, F-55
 Pressure Tightness: 0.5 bar water
 Jetting Resistance: 120 bar
 Sealing Material: EPDM rubber according to DIN EN 681-1
 Temperature Resistance: -40°C to +120°C, temporary max. temperature +160°C
 Standard/Approval: DIN EN 681-1, CE06



PRODUCT RANGE

LATERAL CONNECTOR M140							
Article Number	Reference	Outside Ø Lateral Pipe (mm)	Min. Wall Thickness Main Sewer (mm)	Core Drill (mm)	L Length (mm)	resistant to (bar)	Weight (kg)
32240100	M140 DN 100 PVC	110	45	122	155	0,5	0,4
32240125	M140 DN 125 PVC	125	45	137	155	0,5	0,4
32240150	M140 DN 150 PVC	160	45	172	155	0,5	0,6
32240200	M140 DN 200 PVC	200	45	212	155	0,5	0,7
32240250	M140 DN 250 PVC	250	45	262	155	0,5	0,9
32240300	M140 DN 300 PVC	315	45	327	155	0,5	1,0
32240400	M140 DN 400 PVC	400	45	412	155	0,5	1,1
32140100	M140 DN 100 SML	110	45	122	155	0,5	0,4
32140125	M140 DN 125 SML	135	45	147	155	0,5	0,5
32140150	M140 DN 150 SML	160	45	172	155	0,5	0,6
32440100	M140 DN 100 GGG	118	45	130	155	0,5	0,4
32440150	M140 DN 150 GGG	170	45	182	155	0,5	0,6



Lateral Connector

M55

- + Connecting clay laterals to concrete sewers
- + Reliable and durable solution
- + EPDM rubber profile
- + Resistant to 0.5 bar

Lateral Connector M55 – for connecting clay laterals to concrete main sewers and manholes

The Lateral Connector M55 connects plain ended clay pipes to concrete main sewers or manholes with a minimum wall thickness of 60 mm.



INSTALLATION



Drill and clean hole 90° to pipe axis.

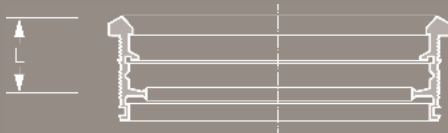


Insert M55 into main sewer.



Apply lubricant to plain ended lateral and push lateral into M55.

DESCRIPTION



TECHNICAL SPECIFICATION

Lateral Connector M55 for connecting clay laterals to concrete main sewers with a minimum wall thickness of 60 mm.

Main Sewer DN/Material _____
Lateral Pipe DN/Material _____

Article Number _____
___ Qty ___ Price/Unit ___ Total

Manufacturer: MÜCHER DICHTUNGEN®, D-50226 Frechen, T +49 2234 928 03-0, F-55
Pressure Tightness: 0.5 bar water
Jetting Resistance: 120 bar
Sealing Material: EPDM rubber according to DIN EN 681-1
Temperature Resistance: -40°C to +120°C, temporary max. temperature +160°C
Standard/Approval: DIN EN 681-1, CE06, MPA Test Certificate No. 22 1743097-01



PRODUCT RANGE

LATERAL CONNECTOR M55							
Article Number	Reference	Outside Ø Lateral Pipe (mm)	Min. Wall Thickness Main Sewer (mm)	Core Drill (mm)	L Length (mm)	resistant to (bar)	Weight (kg)
32051100	M55 DN 100 Clay	131	60	146	65	0,5	0,2
32051150	M55 DN 150 Clay	186	60	200	65	0,5	0,3
32051200	M55 DN 200 N Clay	242	60	257	65	0,5	0,4
32051250	M55 DN 250 N Clay	299	60	315	65	0,5	0,5



B-RING

- + Connecting clay laterals to clay sewers
- + From clay sewer DN 300
- + Preformed EPDM rubber profile
- + Resistant to 0.5 bar

B-Ring - for connecting clay laterals to clay main sewers

The B-Ring according to DIN EN 295-4 connects plain ended clay pipes and fittings to clay main sewers.

Both B-Ring and clay fitting form an economical solution when connecting to existing sewers.



INSTALLATION



Drill and clean hole 90° to pipe axis.



Insert B-Ring according to the peak marking.



Push clay lateral into B-Ring.

DESCRIPTION



TECHNICAL SPECIFICATION

B-Ring for connecting clay laterals to clay main sewers.

Main Sewer
Lateral Pipe

DN/Material _____
DN/Material _____

Article Number _____

___ Qty ___ Price/Unit ___ Total

Manufacturer:

MÜCHER DICHTUNGEN®, D-50226 Frechen, T +49 2234 928 03-0, F-55

Pressure Tightness:

0.5 bar water

Sealing Material:

EPDM rubber according to DIN EN 681-1

Temperature Resistance:

-40°C to +120°C, temporary max. temperature +160°C

Standard/Approval:

DIN EN 295-4, CE06



PRODUCT RANGE

B-RING							
Article Number	Reference	Outside Ø Lateral Pipe (mm)	from Clay Main Sewer (mm)	Core Drill (mm)	L Length (mm)	resistant to (bar)	Weight (kg)
34160150	B-Ring DN 150 Clay	186	300	200	30	0,5	0,2
34160200	B-Ring DN 200 Clay	242	400	257	30	0,5	0,3



NON-RATTLE-RING

- + Avoids rattling of manhole covers
- + Protects the entire manhole
- + Rigid shape (hardness 90 IRHD)
- + Long-Life through EPDM mold

Non-Rattle-Ring – avoids rattling of damaged manhole covers

The Non-Rattle-Ring avoids rattling of old damaged manhole covers.

Through the EPDM rubber hardness of 90 IRHD a long-term protection against rattling is achieved.

The rigidity of the Non-Rattle-Ring allows an easy installation.



INSTALLATION



Clean cover frame.

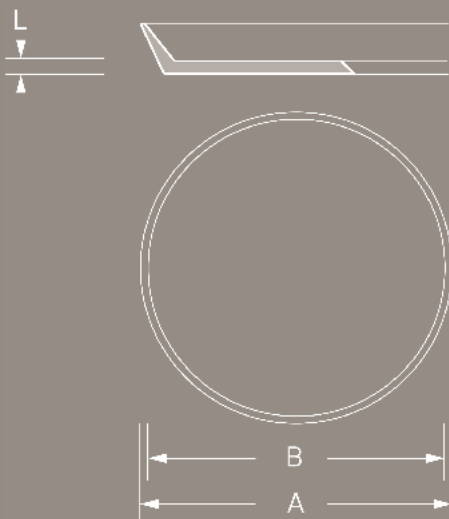


Insert Non-Rattle-Ring.



Pull cover back in.

DESCRIPTION



TECHNICAL SPECIFICATION

Non-Rattle-Ring for the protection of damaged manhole covers against rattling.

Internal Dimension	External Dimension	Manhole Cover
600 mm	665 mm	DIN 4290 (Class B)
600 mm	682 mm	DIN 19584 (Class D, E, F) Ö-Norm B 5110

___ DIN	___ Qty	___ Price/Unit	___ Total
___ DIN	___ Qty	___ Price/Unit	___ Total

Manufacturer: MÜCHER DICHTUNGEN®, D-50226 Frechen, T +49 2234 928 03-0, F-55
 Sealing Material: EPDM rubber according to DIN EN 681-1, hardness 90 IRHD
 Temperature Resistance: -40°C to +120°C, temporary max. temperature +160°C
 Standard/Approval: DIN EN 681-1, CE06



PRODUCT RANGE 

NON-RATTLE-RING						
Article Number	Reference	Class	A Ext. Dimension (mm)	B Int. Dimension (mm)	L Length (mm)	Weight (kg)
7060066	AKR DIN 4290	B	666	600	2	0,1
7060068	AKR DIN 19584 & Ö-Norm	D, E, F	682	600	2	0,1
7002050	AKR-Strip 50 mm wide	-	-	-	2	0,1





ANTIFREEZE RING FOR HYDRANTS

- + Prevents the freezing of surface boxes
- + Flexible and adoptable
- + Protects against ingressing water and dirt
- + Long-Life through EPDM mold

Antifreeze Ring for Hydrants - prevents the freezing of surface boxes

The Antifreeze Ring for Hydrants is made from non-ageing EPDM rubber which makes any greasing unnecessary during winter times and offers a perfect protection against the freezing of the surface box.

Furthermore the hydrants are protected against ingressing water and dirt.



INSTALLATION



Clean cover frame.

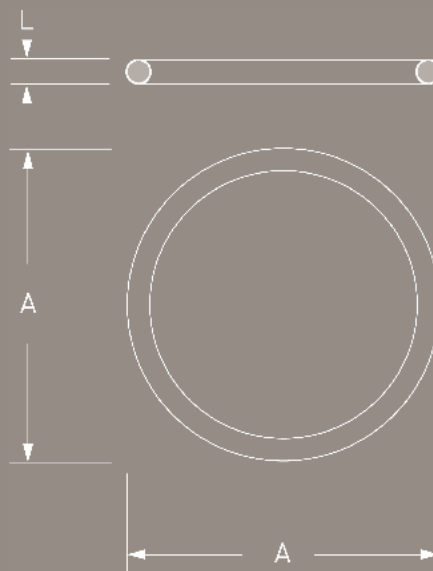
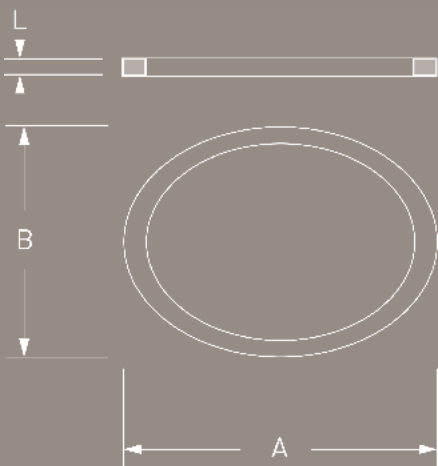


Insert Antifreeze Ring.



Close cover.

DESCRIPTION





PRODUCT RANGE 

ANTIFREEZE RING FOR HYDRANTS						
Article Number	Reference	Class	A (mm)	B (mm)	L (mm)	Weight (kg)
7204055	Ring for Underground Hydrant DN 80, DIN 4055	341/236 mm	341	236	2	0,1
7204056	Ring for Surface Box, DIN 4056	157 mm	157	157	2	0,1
7204057	Ring for Surface Box, DIN 4057/38 (A)	92 mm	92	92	2	0,1
7214057	Ring for Surface Box, DIN 4057/74 (B)	118 mm	118	118	2	0,1

TECHNICAL SPECIFICATION 

The Antifreeze Ring for Hydrants prevents the freezing of surface boxes as well as the ingress of water and the other contaminations.

Ring for Underground Hydrant DN 80 (341/236 mm), DIN 4055	___ Qty	___ Price/Unit	___ Total
Ring for Surface Box (157 mm), DIN 4056	___ Qty	___ Price/Unit	___ Total
Ring for Surface Box (92 mm), DIN 4057/38 (A)	___ Qty	___ Price/Unit	___ Total
Ring for Surface Box (118 mm), DIN 4057/74 (B)	___ Qty	___ Price/Unit	___ Total

Manufacturer: MÜCHER DICHTUNGEN®, D-50226 Frechen, T +49 2234 928 03-0, F-55
 Sealing Material: EPDM rubber according to DIN EN 681-1
 Temperature Resistance: -40°C to +120°C, temporary max. temperature +160°C
 Standard/Approval: DIN EN 681-1, CE06



LUBRICANT

- + Jointing forces are minimised
- + Compatibility with other sealing materials
- + For plastic, clay and concrete pipes
- + Various package sizes

Lubricant - minimizing the jointing forces for pipe laying

Lubricant is used to minimize the jointing forces when laying pipes such as plastic, clay or concrete.

Lubricant is compatible with other sealing materials.



INSTALLATION



Clean socket and spigot.

Apply lubricant to socket and spigot.

Push pipes together.

TECHNICAL SPECIFICATION

Lubricant for minimizing the jointing forces for pipe laying.

Pipe Material _____

Package Size _____

___ Qty ___ Price/Unit ___ Total

Manufacturer: MÜCHER DICHTUNGEN®, D-50226 Frechen, T +49 2234 928 03-0, F-55

Scope of Application: Plastic Pipes (White), Clay Pipes (Blue), Concrete Pipes (Gray)

Packaging Size: White 250 g Tube, 500 g Tube, 1 kg Can, 3 kg Pail

Blue 1 kg Can, 3 kg Pail

Gray 5 kg Pail, 10 kg Pail

Standard/Approval: CE06, Safety Data Sheet (EU) No. 1907/2006

PRODUCT RANGE 

LUBRICANT				
Article Number	Reference	Pipe Material	Content Packaging	Weight (kg)
25060004	Lubricant White 250 g	for plastic pipes	250 g Tube	0,3
25060005	Lubricant White 500 g	for plastic pipes	500 g Tube	0,5
25060011	Lubricant White 1 kg	for plastic pipes	1 kg Can	1,1
25060030	Lubricant White 3 kg	for plastic pipes	3 kg Pail	3,1
25061011	Lubricant Blue 1 kg	for clay pipes	1 kg Can	1,1
25061030	Lubricant Blue 3 kg	for clay pipes	3 kg Pail	3,2
25061011	Lubricant Gray 5 kg	for concrete pipes	5 kg Pail	5,2
25061030	Lubricant Gray 10 kg	for concrete pipes	10 kg Pail	10,5



SHUTTERING-KIT FOR MANHOLE COVERS

- + Repair of Manhole Covers
- + Easy to install
- + Pour pipe included

Shuttering-Kit – for the repair of manhole covers

The Shuttering-Kit is used to apply poured mortar underneath the manhole frame, with a 620 mm diameter for new alignment.

After hardening of the poured mortar the Shuttering-Kit for manhole covers is reusable.

INSTALLATION



Lift manhole frame.

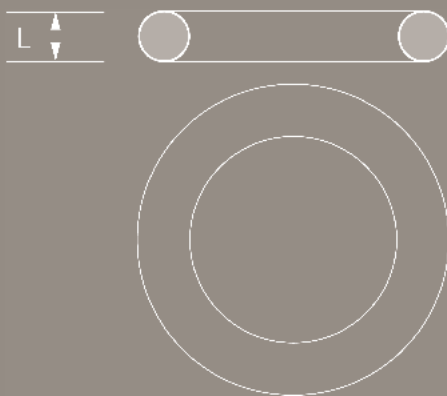


Blow up and position Shuttering-Kit. Then fill mortar into pour pipe.



Remove shuttering-kit after hardening.

DESCRIPTION



TECHNICAL SPECIFICATION

Shuttering-Kit for the repair of manhole covers incl. pour pipe.

Article Number _____

___ Qty ___ Price/Unit ___ Total

Manufacturer: MÜCHER DICHTUNGEN®, D-50226 Frechen, T +49 2234 928 03-0, F-55 CE06
Standard/Approval:

PRODUCT RANGE

SHUTTERING-KIT FOR MANHOLE COVERS

Article Number	Reference	Description	L Length (mm)	Weight (kg)
10062512	Shuttering-Kit Niveaufix DIN 4290 / 19584	Shuttering-Kit incl. pour pipe, L 625 mm	230	1,9



END CAP

- + Sealing of pipe ends
- + For use inside and outside of buildings
- + Clamps in stainless steel
- + Resistant to 0.6 bar

End Cap – for the long and short term sealing of pipe ends

The End Cap is used for the long and short term sealing of pipe ends to prevent ingress of dirt or water.

The End Cap can be used inside and outside of building.



INSTALLATION

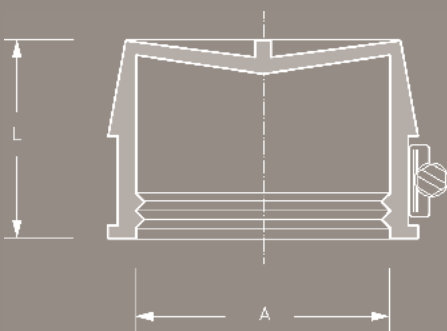


Slide End Cap over pipe end.



Tighten clamps.

DESCRIPTION



TECHNICAL SPECIFICATION

End Cap for the long and short term sealing of pipe ends.

Pipe DN/Material _____

Article Number _____
 Qty Price/Unit Total

Manufacturer: MÜCHER DICHTUNGEN®, D-50226 Frechen, T +49 2234 928 03-0, F-55
 Pressure Tightness: 0.6 bar water
 Sealing Material: EPDM rubber according to DIN EN 681-1
 Stainless Steel: AISI 304/1.4301, alternatively AISI 316/1.4404 according to DIN EN 10088-2

Temperature Resistance: -40°C to +120°C, temporary max. temperature +160°C
 Standard/Approval: DIN EN 681-1, CE06

PRODUCT RANGE

END CAP						
Article Number	Reference	A Size Range (mm)	L Length (mm)	resistant to (bar)	Nm	Weight (kg)
21474015	End Cap 4	105-115	40	0,6	6	0,20
21475020	End Cap 5	130-140	40	0,6	6	0,20
21476028	End Cap 6	155-165	40	0,6	6	0,30
21478016	End Cap 8	205-215	40	0,6	6	0,30

CLAY PIPES, ACCORDING TO DIN EN 295


NORMAL STRENGTH			
DN	DIN 1230	Steinzeug-Keramo	Steinzeug-Keramo Jacking Pipes dM
100	131 +/- 3	131 +/- 3	-
125	159 +/- 3,5	159 +/- 3,5	-
150	186 +/- 4	186 +/- 4	213 +0/-4
200	242 +/- 5	242 +/- 5	276 +0/-6
250	296 +/- 6	299 +/- 6	360 +0/-6
300	350 +/- 7	355 +/- 7	406 +0/-10
350	404 +/- 7	417 +/- 7	-
400	460 +/- 8	486 +/- 8	556 +0/-12
450	524 +/- 8	-	-
500	581 +/- 9	581 +/- 9	661 +0/-15
600	687 +/- 12	687 +/- 12	766 +0/-18
700	790 +/-15	831 +/- 15	870 +0/-24
800	895 +/- 17	949 +/- 17	970 +0/-24
900	1002 +/- 20	1008 +/- 20	1096 +0/-28
1000	1109 +/-23	1119 +/- 23	1275 +0/-30
1200	-	1320 +/- 28	1475 +0/-36

HIGH STRENGTH		
DN	DIN 1230	Steinzeug-Keramo
100	-	-
125	-	-
150	-	-
200	262 +/- 5	254 +/- 5
250	318 +/- 6	318 +/- 6
300	374 +/- 7	376 +/- 7
350	430 +/- 7	417 +/- 7
400	490 +/- 7	492 +/- 8
450	548 +/- 8	548 +/- 8
500	607 +/- 9	609 +/- 9
600	721 +/- 12	725 +/-12
700	831 +/- 15	858 +/- 12
800	941 +/- 17	959 +/- 12
900	-	1084 +/- 14
1000	-	1273 +/- 15
1200	-	1457 +/- 18

VARIOUS PIPE MATERIALS							
DN	PP / PVC	SML / BML (cast iron)	GGG (ductile iron)	GRP	ULTRA RIB	Concrete reinforced	Fibre Cement
100	110	110	118	-	-	approx. 144	116
125	125	135	144	-	-	-	141
150	160	160	170	168	170	approx. 198	168
200	200	210	222	220	225	approx. 252	220
250	250	274	274	272	280	approx. 310	273
300	315	326	326	324	335	approx. 420 / 440	328
350	355	-	378	376	-	-	384
400	400	429	429	427	450	approx. 550	432
450	450	-	480	478	-	-	486
500	500	532	532	530	560	approx. 670	540
600	630	635	635	616	-	approx. 800	646
700	710	-	738	718	-	approx. 930	750
800	800	-	842	820	-	approx. 1060	858
900	900	-	945	924	-	approx. 1190	963
1000	1000	-	1048	1026	-	approx. 1320	1068
1100	-	-	1152	1099	-	approx. 1450	-
1200	1200	-	1255	1229	-	approx. 1580	1281

Technical changes reserved – May 2016.





ORDERING

When ordering couplings or bushes, it is essential to specify the size and type of pipes to be joined. **The outside diameter of the pipe(s) is the critical dimension needed to specify the correct coupling and/or bush.**

Mücher maintains an extensive stock of all types and sizes of couplings, whereas the most popular required are also available from many stockists Europe-wide.

All couplings and bushes over 620 mm diameter are manufactured to suit specific site requirements, therefore measurement of the outside diameter of the pipes to be joined is strongly recommended before ordering these couplings.

DELIVERY

Ordered a.m. – supplied next day! Any a.m. incoming standard sized orders can be supplied next day either for stock or directly to site.

Our operational processes from consulting to supplying is completed within a short period of time.

We are very flexible and work alongside our logistical partners to deliver:

The right product! >> At the right time! >> To any destination!



THE MÜCHER-COMMITMENT 



CONSULTING

+



DELIVERY

+



INNOVATION

+



AVAILABILITY

+



SECURITY

MÜCHER DICHTUNGEN GmbH & Co. KG
Europaallee 43
D-50226 Frechen

T +49 2234 928 03-0
F +49 2234 928 03-55
sales@muecher.com

www.muecher.com 

CIVILS

PLUMBING